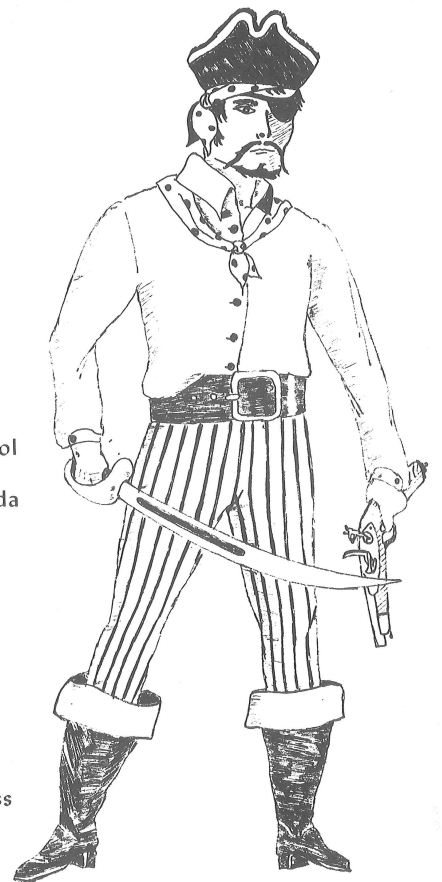


# *The Pirate*

THE  
PIRATE  
1960

Pasco High School  
Dade City, Florida

Presented by  
the Senior Class





## TABLE OF CONTENTS

INTRODUCTION.....	3
DEDICATION .....	12
FACULTY .....	13
SENIORS .....	19
JUNIORS .....	41
SOPHOMORES .....	53
FRESHMEN .....	61
ACTIVITIES .....	71
HALL OF FAME .....	89
SPORTS .....	99
ADVERTISEMENTS .....	115



## INTRODUCTION

We, the compilers and editors of the 1960 edition of the PIRATE, hope that we have brought you something that will indelibly stamp upon your minds cherished memories that will never fade.

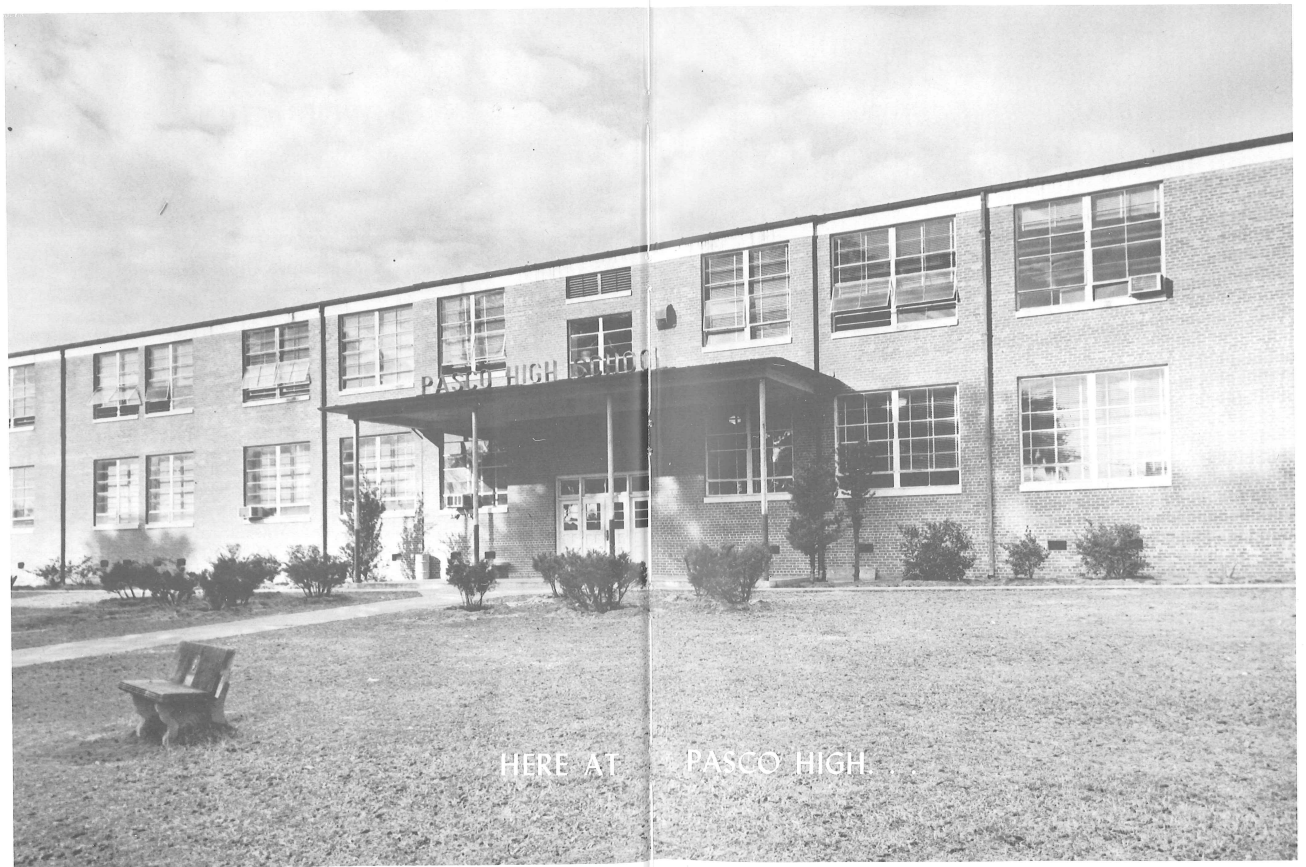
The 1960 PIRATE is a story in pictures of your year at P.H.S. In this story we have tried to follow each one of you as you have participated in the different phases of high school life. The dances, the games, the studying, and the work -- these we would like to recall to you.

This book could not have been produced without the help and co-operation of the student body and faculty. We sincerely thank you.

Now, follow along with us through some of "the most exciting and also some of" the ordinary days at our school, as we look at LIFE AT PASCO HIGH.

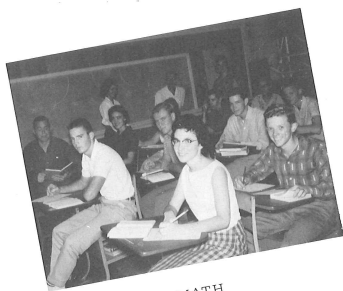
*The Editors*





HERE AT PASCO HIGH

## WE STUDY



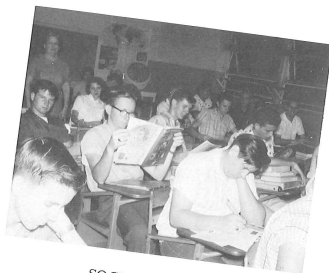
MATH



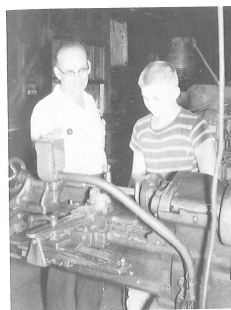
SCIENCE



HOMEMAKING



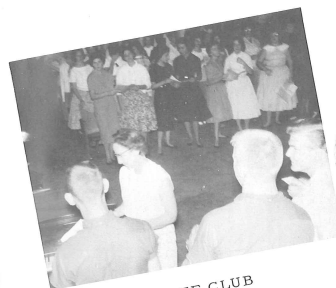
SOCIAL STUDIES



SHOP



SPEECH



GLEE CLUB



BUSINESS

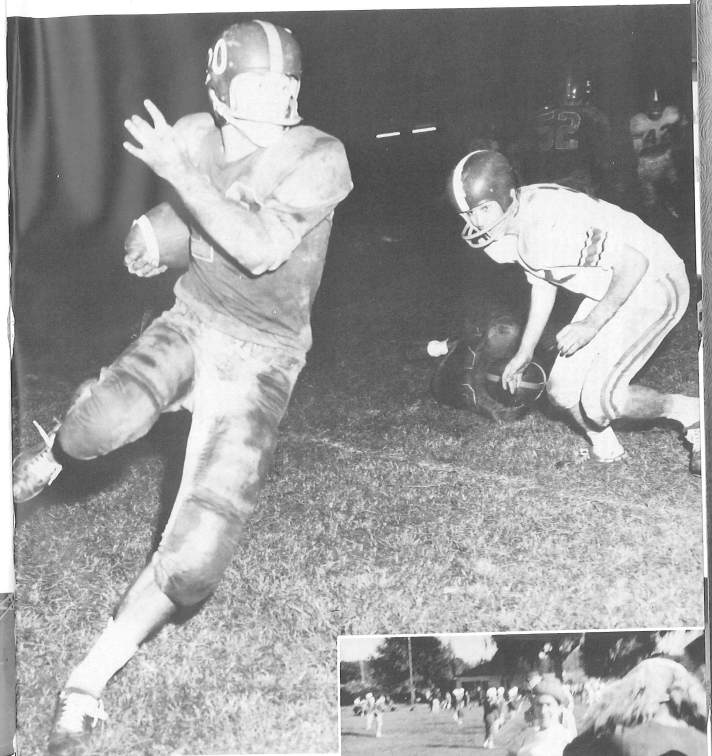
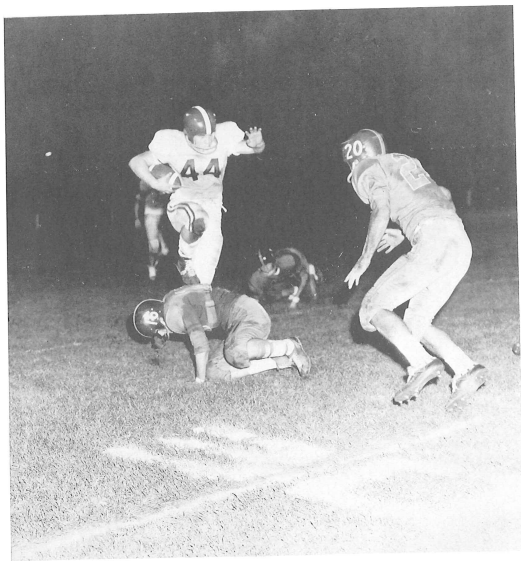
ENGLISH

## AND WORK

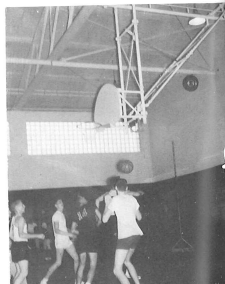


Page Seven

# WE PARTICIPATE IN SPORTS



Page Eight

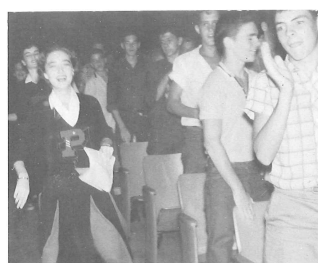


POWDER PUFF  
FOOTBALL





PEP RALLIES



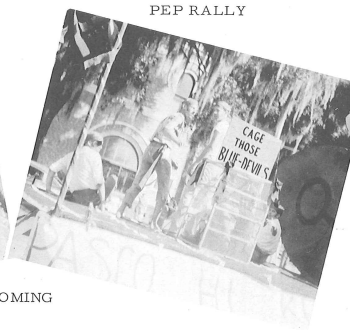
PEP RALLY



WE HAVE FUN

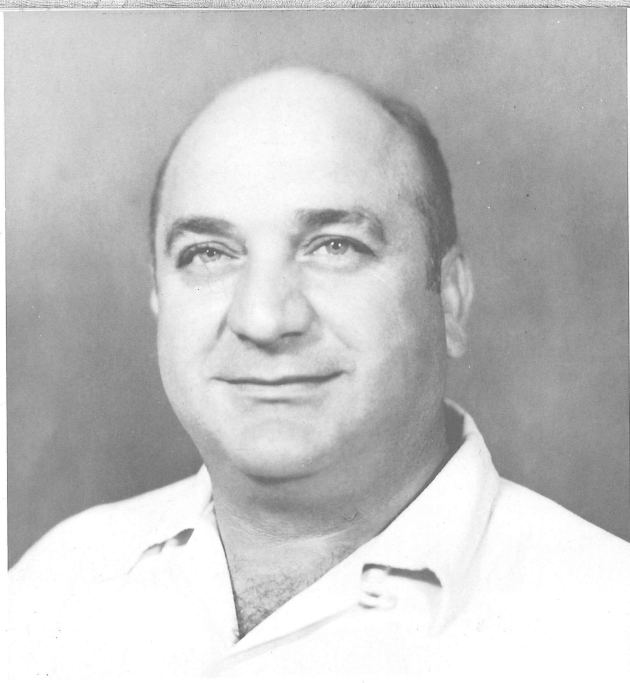


HOMECOMING



SADIE HAWKINS' DAY





## DEDICATION

To our helpful and understanding teacher who has rendered every service possible to uphold the spirit of Pasco High School; to one who has encouraged us and guided us in our undertakings; who in his years at Pasco High has taught us willingly, faithfully, and with fullest capacity; to the man who has helped to make our football team one of the best in the state of Florida, we, the Senior Class of 1960, proudly dedicate this edition of the PIRATE to Mr. Joe Caruso.



## BOARD OF EDUCATION

FRONT ROW, Left to Right: Mr. Edgar H. Kirkland, Vice-Chairman; Mrs. Margaretta Witt, Mrs. Mack Anderton, Mr. C. P. McCabe, Chairman. BACK ROW: Mr. Chester W. Taylor, Jr., Superintendent; Mr. George C. Dayton, Attorney; Mr. Carl Hatcher.



MR. E. D. HEYLER  
PRINCIPAL

A. B., Bowling Green  
College of Commerce

L.L. B., LaSalle University

M. ED., Pennsylvania State  
University

You are to be congratulated upon completing your high school education at the beginning of a new decade. I hope that many of you will continue your education in our institutions of higher learning. We are living in a period of increasingly rapid mental growth, a kind of intellectual renaissance. You must keep up with this growth.

I believe the free public school system should be extended to include the thirteenth and fourteenth years. The success of the public junior or community colleges in many states of our nation provides sufficient evidence to justify this statement.

Study of the needs of academically talented students has revealed that a school climate in which high achievement receives high respect strengthens individual pupil growth and promotes a higher level of aspiration, as well as better spiritual and moral values.

Today you need to make an effort to work out in your decades an analysis of educational problems within an inclusive cultural perspective. This means, among other things, more than a "tinkering up" of the program of the school. It means an adequate regard for the broader social analysis that gives meaning and direction to educational change.

We must accept the challenge to look to the future.

*E. D. Heyler*



MRS. MARGARET JOHNSON  
Secretary

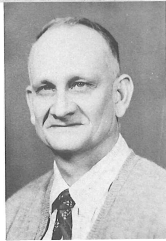


MR. EARL SHEPARD  
Dean of Boys

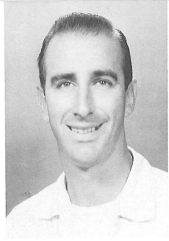
MISS PATRICIA BLAIR  
Dean of Girls



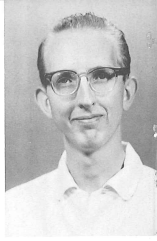
MISS PATRICIA BLAIR  
English I, Dean of Girls.  
B. S. - Florida State  
University.



MR. FRANK BLOCKER  
World History  
B. A. E. - University of  
Florida.



MR. ROBERT BOOTH  
Civics, Coach.  
B. S. - University of  
Florida.



MR. JAMES BROWN  
Spanish I and II, General  
Business.  
B. S. - Indiana University.



MR. JACK DUDLEY  
General Mathematics,  
Drafting, Woodwork.  
B. S. Ed., M. Ed. -  
University of Florida.



MRS. JOY ETTY  
Home Economics I and II,  
B. S. - Florida State Uni-  
versity.



MRS. RUTH FINGERHUT  
Home Economics I, II,  
and III.  
B. S. - Florida State Uni-  
versity, M. A. - Florida  
Southern College.



MISS ELIZABETH HALE  
Librarian.  
B. A. - Columbia University,  
B. L. S. - Peabody College.



MRS. MILDRED BYRD  
Latin I and II, Glee  
Club.  
B. S. - Indiana State  
Teacher's College.



MR. RAYMOND CAMPBELL  
Agriculture I.  
B. S. A., M. Ag. - University  
of Florida.

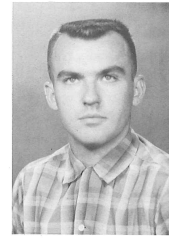
## FACULTY



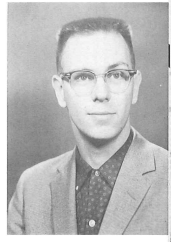
MR. JACK HANNA  
World Geography,  
Business Math, Gen-  
eral Business, Coach.  
B. S. - Memphis State  
University.



MRS. ANN HENDERSON  
Diversified Cooperative  
Training.  
B. S. - Florida State Uni-  
versity.



MR. ROBERT HERSHEY  
English II.  
B. A. - University of  
Toronto.



MR. JUDSON HETRICK  
English III, Speech.  
B. A., M. A. - Bob Jones  
University.

MR. JOSEPH CARUSO  
Algebra I and II,  
Physical Science,  
Coach.  
B. A. - Elon College.

MR. DAVID CONGLETON  
Shop I and II.  
B. E. - University of  
Pennsylvania.

MR. CHARLES CORBIN  
Band.  
B. E., M. A. - West  
Virginia University.

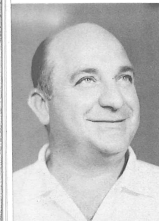
MR. JOHN DILLON  
Physics, Chemistry,  
Biology.  
B. A. - University of  
St. Thomas.

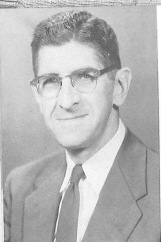
MR. ROYCE JOHNSON  
Bookkeeping I and II,  
Business English,  
B. S. - Mississippi  
Southern College.

MRS. RUTH JONES  
Physical Education I and  
II.  
Stetson University, West-  
ern State of Colorado.

MR. GARY JORDAN  
Biology, Psychology,  
Sociology.  
B. S. - Florida Southern  
College.

MR. JAMES KARR  
Physical Education I and  
II.  
B. S. - Morris Harvey  
College.





MR. GERALD McCLURE  
English I, II, III,  
B. A., M. A. - Alle-  
gheny College.



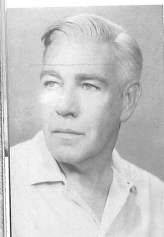
MRS. BERTHA McKILLIPS  
American History, Ameri-  
can Government,  
A. B., M. A. - Florida  
Southern College.



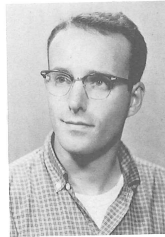
MR. JOHN MANGAN  
Shorthand I and II, Typing I,  
B. A. - University of Scrant-  
on, B. S. - Indiana Teach-  
er's College, M. A. - Uni-  
versity of Pittsburg.



MISS LILLIAN MARTIN  
English I and II,  
A. B. - Florida Southern  
College, M. A. - Columbia  
University.



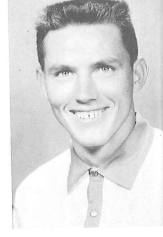
MR. EDWARD MYLOD  
English IV, French,  
Montclair State Teach-  
er's College.



MR. JAMES OLIN  
Business Math, General  
Math,  
B. S. - Grove City College.



MRS. WILMA PEDEN  
Typing I, Office Training,  
B. S. - Florida Southern  
College.



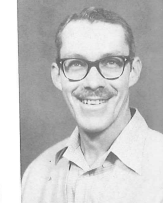
MR. FRED PHAGAN  
Physical Science, Biology,  
B. A. - Lincoln Memorial  
University.

MR. WILLIAM PHILMON  
Agriculture I, II, III, and  
IV,  
B. S. A. - University of  
Florida.

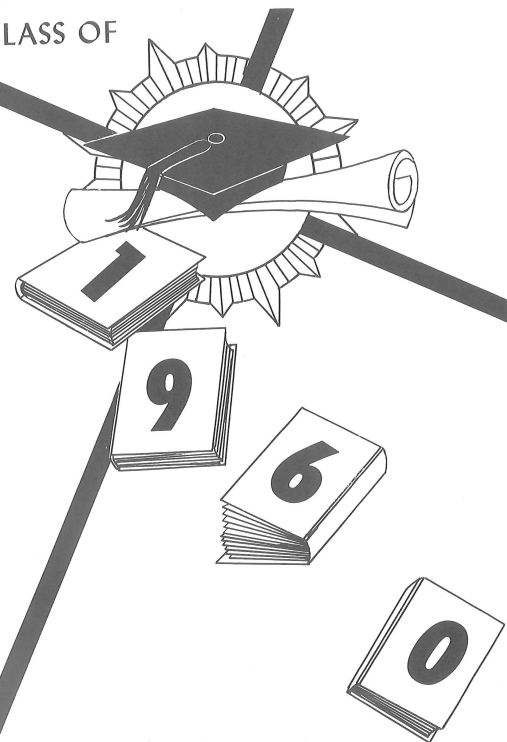
MR. ROBERT ROGERS  
Driver Education,  
B. A. - Elon College.

MR. EARL SHEPARD  
American Government,  
Dean of Boys,  
B. A. - Iowa State Teacher's  
College.

MR. ALBERT SMITH  
Algebra II, Plane & Solid  
Geometry, Trigonometry,  
College Algebra,  
B. A. - University of Tampa,  
M. A. - Columbia University.



CLASS OF



SENIORS



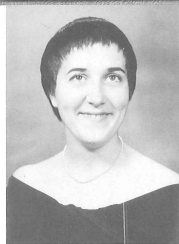
## OFFICERS

Jimmy Moore, Secretary; Gloria Burkett, Treasurer; Bobby Faulk, Vice-President; Mike Pruett, President.

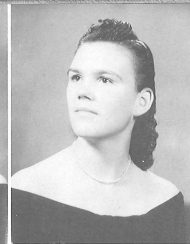


## CLASS SPONSORS

MISS PATRICIA BLAIR  
MR. ROYCE JOHNSON



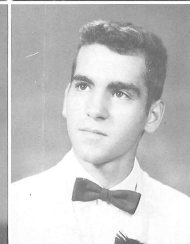
MABEL CELESTA ABNEY  
Office Training Club 4.  
Will become a secretary.



BARBARA ANN ALLEN  
(Rubarb)  
Glee Club 3, 4; Future Nurses 4; Bible  
Appreciation Club 3.  
Will join the Navy and become a nurse.



HELEN LOUISE AUTON  
Beta Club 2, 3, 4; F. T. A. 3, 4; F. H. A.  
2; Future Nurses, Treasurer 4; Pep Club  
4; Bible Appreciation 2; Band 1, 2, 3, 4;  
Tri-Hi-Y 4; Banquet Waitress 2; Senior  
Class Play.  
Will attend Florida State University  
and study nursing.

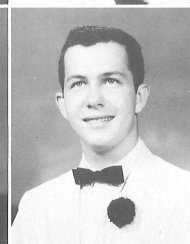


ROBERT BACKLINIE

## CLASS OF '60



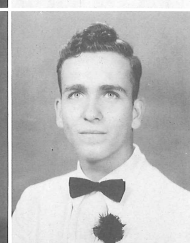
NANCY KAY BALDWIN  
(Kay)  
Glee Club 1, 2, 3; Pep Club 1, 2, 3, 4.



CARL BOWMAN BARBEE  
Homeroom Treasurer 2; Pep Club 4;  
Hi-Y 3; D. C. T. President 4; Bible  
Appreciation Club 1, 2.



NANCY ANN BARFIELD  
(Nanc)  
F. T. A. 2, 3, 4; Pep Club 2, 3, 4; Band  
2; J. V. Cheerleader 1; Student Council  
1; Tri-Hi-Y 3; Annual Staff 4.  
Plans to attend U. of F. and become a  
pharmacist.



BYRON R. BARR  
(Curly)  
Transferred from Lake View High  
School, Winter Garden, Florida. Lib-  
rary Club 1; Photography Club 1, 2;  
Band 1, 2.  
Intends to make a career of the Air  
Force.

**ALICE C. BEAVER**  
Glee Club 1, 2; Tri-Hi-Y 2, 3; Music  
Appreciation Club 1; Bible Appreciation  
Club 1, 2; Pep Club 4; Pirate Log Staff  
3; Annual Staff 4.  
Will do office work in Tampa.

**NORMA LEE BENEFIELD**  
Homeroom Secretary 1, President 2;  
Pep Club 3, 4; Beta Club 2, Treasurer 3;  
Secretary 4; Tri-Hi-Y 3, Treasurer 4;  
F. T. A. 4; F. H. A. 2, 3; Future Nurses  
4; Bible Appreciation Club 2; Student  
Council 2; J. V. Cheerleader 2.

**CHARLES WAYNE BLITCH**  
(Chuck)  
Band 1, 2, 3; Track 1; D. C. T. 4.  
Plans to study electronics and become  
a technician.

**DARRELL W. BOOTH**  
Will attend Miami University and be-  
come a U. S. A. F. jet fighter pilot.

## CLASS OF '60

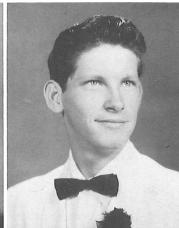
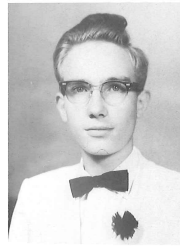
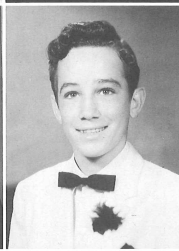
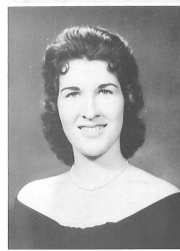
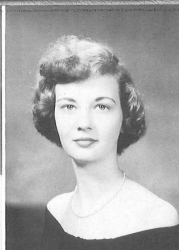
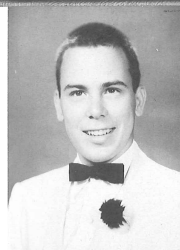
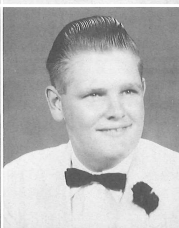
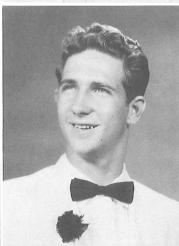
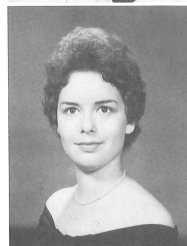
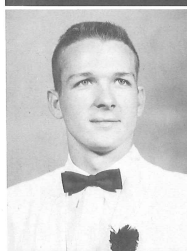
**JULIA ALLEN BORCK**  
(Cissy)  
F. T. A. 2, 3, 4; Pep Club 2, 3, 4; Band  
1, 2; Tri-Hi-Y 3, 4; Homeroom Vice-  
President 1.  
Will attend F. S. U. and study to be an  
elementary school teacher.

**ALLEN BOYETT**

**JERRIE LEE BOYETT**  
Office Training, Treasurer 3; D. C. T.  
Historian 4; Future Nurses 4; Student  
Council 4.  
Plans to become a secretary.

**JERRY BOYT**  
F. F. A. 1, 2; Football 4.

Page Twenty-Two



**FRANK CALVIN BRICE, III**  
(Frank)  
Student Council 1, 2, 3; Pep Club 2, 3,  
4; Glee Club 4; Hi-Y 3, 4; Banquet  
Waiter 2; Notable 3; Pirate Log Staff 4.  
Plans to go to the University of Flor-  
ida and later study.

**THELMA MARIE BRINSON**  
(Dee)  
Pirate Log 2, Editor 3, 4; F. H. A. 2;  
Beta Club 2, 3, 4; Pep Club 3, 4; Glee  
Club 4; F. T. A. 2, 3, President 4; Ban-  
quet Waitress 2; Student Council 3, 4;  
Class Secretary 3; Future Nurses 4; Tri-  
Hi-Y 3; Dramatics Club 4; P. H. S.  
News Correspondent to Dade City Ban-  
ner 4.  
Will attend Gordon Keller Nursing  
School.

**WILMA JEAN BROOKS**  
(Jean)  
Beta Club 2, 3, 4; Operetta 1; Bible  
Appreciation 1, 2; Office Training 4;  
F. T. A. 4; Pirate Log Staff 4; Pep Club  
4; Homeroom President 4.  
Plans to become a teacher or attend  
business college.

**EUGENE BROOKS**  
(Junior)  
J. V. Baseball 1, 2; Agriculture 1, 2, 3,  
4; Key Club 2, 3, 4; Beta Club 2, 3, 4;  
Student Council 3.

## CLASS OF '60

**KENNETH WILLIAM BROWN**  
(Ken)

**RITA GAY BROWN**  
(Shortie)  
Transferred from Orlando. Homeroom  
Secretary 2; Pep Club 3, 4; Cheerleader  
3, 4; Homeroom President 1; Pirate Log  
Staff 3; Citizenship Roll 1.  
Plans to attend the Vocational School  
of Orlando and take beauty culture.

**SUSAN BROWN**  
(Sue)  
Transferred from Blanchard, Michigan.  
Band 1, 2, 3.  
Plans to enlist in the service.

**DOUGLAS McARTHUR BUCHANAN**  
(Mac)  
Baseball.  
Electrical Engineering in the service.

Page Twenty-Three

EDWARD WILLIAM BURKE  
(Ed)  
Football 1, 2, 3.

GLORIA ANN BURKETT  
(Glo)  
Majorette 1, 2, 3, 4; Pep Club 2, 3,  
Secretary 4; Class Treasurer 4; Tri-Hi-  
Y 3, 4; Glee Club 2, 3, 4; Bible Appreci-  
ation 1, 2; Operetta 2, 3, 4; F.H.A. 1,  
2; F.T.A. 4; Homeroom Secretary,  
Treasurer 4; Band 1, 2, 3, 4.  
Plans to operate a dance studio.

MARY CAROLYN BURNSED  
D.C.T. 4; Future Nurses Club 4.  
Marriage.

ELSIE GEORGENE CAMPBELL  
(George)  
Glee Club 1; F.H.A. 1, 2, 3.

## CLASS OF '60

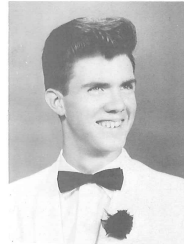
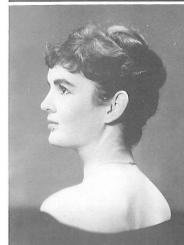
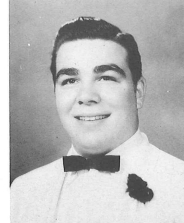
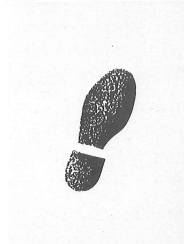
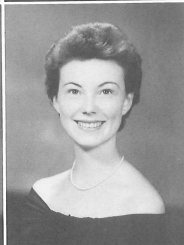
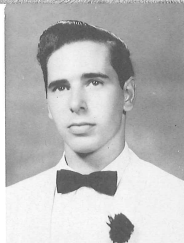
JERRY MILTON CARR  
J.V. Baseball 1.  
Plans to join the Air Force and enter  
officer training school.

EDNA LOUISE CARUSO  
(Ed)  
Pep Club 1, 2, 3, 4; Treasurer 3, 4;  
Beta Club 2, 3; Vice-President 4;  
F.T.A. 4; Glee Club 3, 4; Banquet  
Waitress 2; Cheerleader J.V. 1, Varsity  
3, 4; Tri-Hi-Y 3, 4.  
Will attend University of Florida.

THOMAS EDWARD CHAPIN  
(Tom)  
Glee Club 3, 4; Library Assistant 2, 3, 4.  
Plans to become a social worker.

SHERMAN CHRISTIAN  
(Slim)  
F.F.A. 1, 2, 3; Shop 1.  
Plans to take a course in automobile  
mechanics in the Navy and later be a  
rancher.

Page Twenty-Four



CAROLYN CLARK  
F.H.A. 1; Homeroom Treasurer 1;  
Glee Club, Operetta 1; Bible Appreci-  
ation Club 2, 3; Future Nurses Club 4;  
D.C.T. Secretary 4.  
Plans to go to air line school or do  
secretarial work.

CAROLYN S. CLARK  
(Katie)  
Glee Club 1, 2, 3; F.H.A. 1, 2;  
F.T.A. 4; Student Council 1; Tri-Hi-  
Y 3, Vice-President 4; Beta Club 2, 3,  
Treasurer 4; Pep Club 4.  
Will attend Appalachian State  
Teacher's College.

BEVERLY KAY CLEMENTS  
(Katie)  
Bible Appreciation Club 1, 2; Tri-Hi-  
Y 3, 4; J.V. Cheerleader 1, Varsity 4;  
Pep Club 4; Future Nurses 4; Glee Club,  
Operetta 4.  
Modeling.

BARBARA CLEVELAND  
(Bobbie)  
F.H.A. 1; Bible Appreciation Club 1;  
Glee Club 2.  
Plans to do secretarial work.

## CLASS OF '60

EDWARD WILLIAM COATES  
(Eddie)  
Class Treasurer 3; Homeroom Vice-  
President 4.  
Will attend Florida Southern College  
and study business management.

JOSEPHINE LUISA COLLURA  
(Josie)  
4-H 1, 2, 3, 4; F.H.A. 3; Pep Club 1;  
Office Training 1.  
Plans to attend business school.

DEE ANN COURBAT  
(Dee)  
Band 2; Tri-Hi-Y 4; Future Nurses 4.  
Will attend the Business University of  
Tampa.

CAROLE JEAN DAGER  
(Yankee)  
Transferred from Zephyrhills High  
School. Glee Club 1.  
Plans to attend business college and  
later do office work.

Page Twenty-Five

STEPHEN WHITE DENLINGER  
(Steve)  
Transferred from American School,  
Guatemala. Key Club 4; Pep Club 4;  
Football 4.  
Plans to continue education in college.

ROBERT EMERSON DEW  
Key Club 2, Executive Board 3; Beta  
Club 2, 3, 4; Pep Club 3; Homeroom  
President 1, 2; Student Council 4; Sen-  
ior Class Play 4.  
Will attend University of Florida or  
University of Michigan.

MABRY EARL DIXON  
(Punkin)  
Manager of Pasco High Football, Base-  
ball, and Basketball Teams 1, 2, 3, 4.

DONALD LEE DOUGLAS  
Hi-Y 3; D.C.T. 4; Bible Appreciation  
Club 1, 2.  
Plans to study court recording at Flor-  
ida Central College.

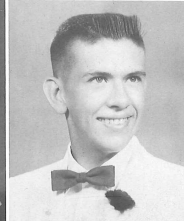
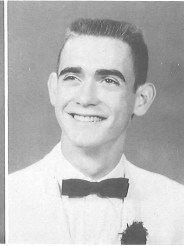
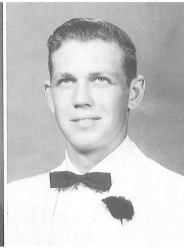
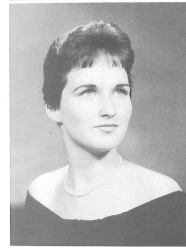
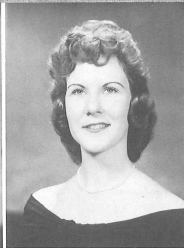
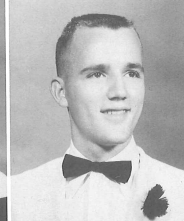
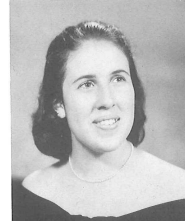
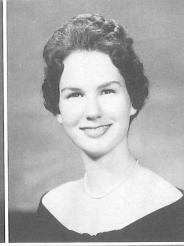
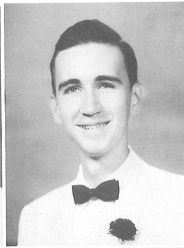
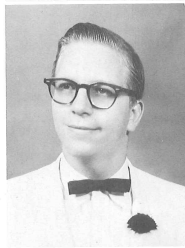
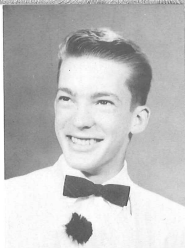
## CLASS OF '60

JENNY SUE DOUGLAS  
(Jen)  
Band 1, 2, 3; Tri-Hi-Y 3, 4; Office  
Training Club, Vice-President 4; F.T.A.  
4; Glee Club, Operetta 3; Pep Club 3, 4.  
Secretarial work.

DOROTHY FRANCES DOWLING  
(Dot)  
F.H.A. 1, 2; Bible Appreciation 1, 2;  
D.C.T. 4.  
Plans to work as a secretary.

SUSAN LEE DUDLEY  
(Tootsie)  
Ground Observer Corps 1; F.H.A.,  
Chaplain 1; Tri-Hi-Y, Chaplain 3,  
President 4; F.T.A. 3, 4.  
Will attend Appalachian State Teacher's  
College.

THOMAS WATSON DUNCAN  
(Buddy)  
Plans to join the Navy.



BARBARA ANN DUPREE  
F.H.A. 1; D.C.T. 4; Future Nurses  
Club 4.  
Plans to work as a secretary.

JO ANN ETHERIDGE  
Bible Appreciation Club 2; Future  
Nurses 4.  
Secretarial work.

NANCE MARY ETHERIDGE  
Bible Appreciation Club 2; Future  
Nurses 4.  
Will become an executive secretary.

LAMAR EVANS

## CLASS OF '60

ELDIS RAYMELL FAIRCLOTH  
(Boots)  
Tri-Hi-Y 4; Pep Club 4; F.T.A. 4;  
Student Council 4; Future Nurses 4;  
Homeroom Vice-President 2; Secretary  
3.  
Will attend business college.

ROBERT SIDNEY FAULK  
(Runt)  
Football, Baseball 1, 2, 3, 4; Key Club  
2, 3, 4; Pep Club 1, 2, 3, 4; Letterman's  
Club 3, 4; Glee Club, Operetta 4;  
F.F.A. 1; Basketball 1; Bible Appre-  
ciation 1, 2; Class Vice-President 4; Home-  
room President 1; Vice-President 2;  
Student Council 2, 4.  
Will attend University of South Florida.

SUE NEAL FLEMING  
Student Council 1, 4; Future Nurses 4;  
D.C.T. 4; Annual Staff 3.  
Plans to study nursing.

JOE LEE FOUNTAIN  
F.T.A. 1, 2, 3, 4; Glee Club, Oper-  
etta 2, 3, 4; Bible Appreciation 1, 2; Hi-  
Y 3; Library Assistant 1, 2.  
Will study education at Bob Jones  
University.

REBECCA CHRISTINE FOX  
(Christine)  
Science Club 1; Latin Club 2; F.H.A.  
2; Glee Club, Operetta 4.  
Will be an airline hostess or an artist.

BETTY CAROL FOXWORTH  
(Betty)  
Bible Appreciation Club 2; Glee Club,  
Operetta 3; Beta Club 2, 3, 4; Office  
Training Club, President 4; Tri-Hi-Y  
4; F.T.A. 4; Girls' State 3; Student  
Council 2.  
Plans to be a secretary and get married.

CAROLE LEE FRANCE  
(Carole)  
Band, Majorette 1, 2, 3, 4; Beta Club 3,  
4; Tri-Hi-Y 3, 4; Pep Club 3, 4; F.H.A.  
1, President 2; F.T.A. 2, 3, 4; Student  
Council 1, Secretary-Treasurer 2;  
Homecoming Court 1, 2, 4; F.F.A. Dis-  
trict Sweetheart 3.

JAMES EMORY GANT  
(Jimmy)  
Will attend the University of South  
Florida.

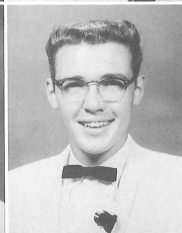
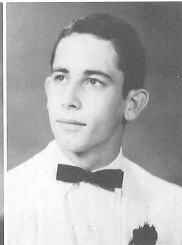
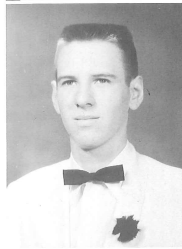
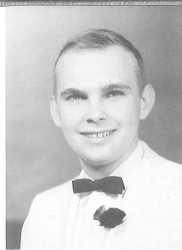
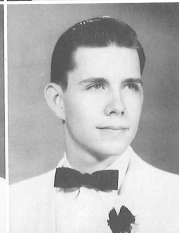
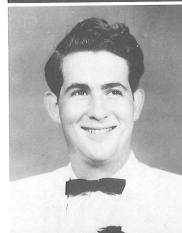
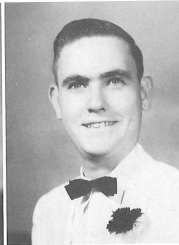
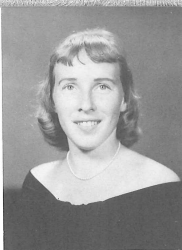
## CLASS OF '60

FRANCES ADELENE FREEMAN  
Beta Club 2, 3, 4; Pirate Log 1, 2, 3, 4;  
Glee Club, Operetta 1, 2, 3, 4; Band 2;  
Quill & Scroll 3, 4; F.T.A. 3, Reporter  
4; Banquet Waitress 2; F.H.A. 1, Sec-  
retary 2; Pep Club 4; Tri-Hi-Y 3, 4;  
F.H.S. News Correspondent to D.C.  
Banner; Class Play 4.  
Will attend Southwestern College at  
Memphis.

DAVIS WALTER GASKIN  
(Uncle Walter)  
D.C.T. 4.  
Wants to attend business college and  
work in an office.

JERRY NOLEN GASKIN  
(Lard)  
Band 1, 2, 3, 4; F.F.A. 1.  
Plans to attend Stetson University.

JAMES WILLIAM GEIGER  
(Jim)  
Student Council 1, 2; Football 1, 2;  
Class President 1, Vice-President 2;  
Key Club 2, Secretary 3, Vice-President  
4; Glee Club, Operetta 3, 4; Pep Club  
2, 3, 4; Beta Club 2, 3, 4; Bible Appre-  
ciation 3; Hi-Y 3, 4; Banquet Waiter 2;  
Annual Staff 3, 4; Notable 3; Homecom-  
ing Court 1, 2, 4.  
Will study optometry at Florida State  
University.



RONALD COPLEY GILMORE  
(Blue Eyes)  
Glee Club 4; Hi-Y 4; Operetta 4;  
Senior Class Play 4.  
Plans to study Liberal Arts at the Uni-  
versity of North Carolina.

MARION ELIZABETH GOOLSBY  
(Lia)  
F.H.A. 1, 2, 3; Tri-Hi-Y 3; Future  
Nurses Club 4; Bible Appreciation Club  
1, 2.  
Will attend Jones Business College.

RICHARD DAVID GRAY  
(Dick)  
Basketball 1, 2, 3, 4; Pep Club 3, 4;  
Hi-Y 4.  
Plans to attend junior college at Sara-  
sota.

CAROL MARIE GRIES  
Glee Club, Minstrel Show 2.  
Wants to become a stenographer.

## CLASS OF '60

GWENDOLYN JEAN HALL  
(Gwen)  
Bible Appreciation Club 1, 2; Glee  
Club, Operetta 3, 4; J.V. Cheerleader  
2; Homeroom Secretary-Treasurer 2;  
Pep Club 4; F.T.A. 4; Tri-Hi-Y 4;  
Future Nurses 4; Office Training, Sec-  
retary 4; Band 1, 2.  
Will attend Jones Business College.

RONALD JAMES HARRELL  
(Smiley)  
Basketball, Track 1; Football 1, 2, 3,  
4; Baseball 2, 3, 4; Hi-Y 3, 4; Key Club  
1, 2, 3, 4; Pep Club 2, 3, 4; Letterman's  
Club 3, 4; Glee Club 2, 3, 4; F.T.A. 4;  
F.F.A. 1; Student Council 1, 2, 3;  
Homeroom President 3, Vice-President  
2, 4-Hi 1; Bible Appreciation 2, 3, 4;  
Class Play 4.  
Plans to attend Mississippi Southern  
College.

FREDRICK NICHOLAS HARPER  
(Nick)  
Band 1, 2, 3, 4; Pep Club 3, 4; Ground  
Observer Corps; Senior Class Play 4.  
Wants to be an airline pilot. Will  
attend University of Alabama.

STANLEY S. HART  
(Stan)  
Plans to become an artist.

DENNIS LEE HARVEY  
(Jabo)  
Bible Appreciation Club 1, 2; Hi-Y 4;  
Senior Class Play 4.  
Plans to attend Florida Southern College  
or join the Navy.

ERNEST HEMINGWAY

HENRY NATHAN HENDERSON  
(Hail)  
Band 1, 2, 3, 4; Hi-Y 3, 4; Pep Club 4;  
Bible Appreciation Club 1.  
Will study at the University of Florida.

DONNA LEE HIBBARD  
(Hail)  
Tri-Hi-Y 3, 4; Office Training Club  
4; Future Nurses Club 4.  
Plans to attend nursing school.

## CLASS OF '60

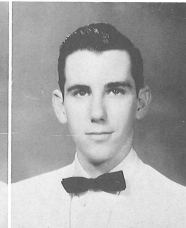
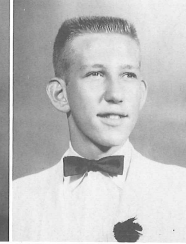
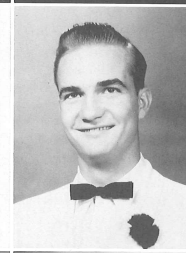
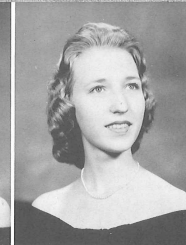
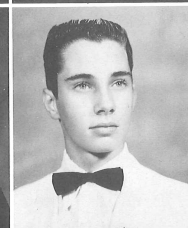
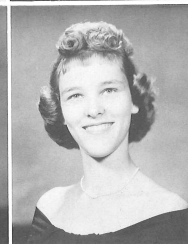
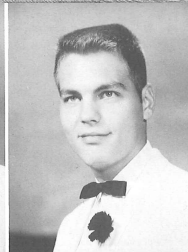
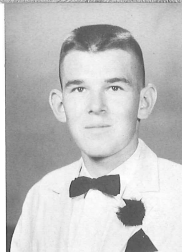
SYBIL JOAN HINES  
(Jo)  
F. H. A. 1, 2, 3; Tri-Hi-Y 3; Future  
Nurses Club 4; Bible Appreciation Club  
1, 2.  
Plans to attend Jones Business College.

BARBARA ETHEL HOWARD  
(Bobbie)  
Bible Appreciation Club 1, 2; F. H. A.  
1, 2; Trail Blazers 2; Glee Club, Oper-  
etta 3; Pep Club 3, 4; Tri-Hi-Y 4;  
Office Training Club 4.  
Will enter the Business University of  
Tampa.

ELIZABETH ANNE HOWARD  
(Betty)  
F. H. A. 1, 2; Pep Club 3, 4; Bible Ap-  
preciation 1, 2; Tri-Hi-Y 4; Future  
Nurses Club 4; Trail Blazers 2.  
Plans to study nursing at Gordon Keller.

RALPH LARSON HUDSON  
Hi-Y 3, 4.  
Will attend the University of Florida.

Page Thirty



MARTHA SUE JETTON  
(Sue)  
D. C. T. Vice-President 4; Homeroom  
President 1; Future Nurses Club 4; Stu-  
dent Council 2; F. H. A. 1; Bible Appre-  
ciation Club 1, 2.  
Will attend Jones Business College.

MYRTLE MATILDA JOHANNES  
(Sally)  
F. H. A. 2; Bible Appreciation Club 1,  
2; Tri-Hi-Y 3, 4; Future Nurses 4; Ju-  
nior Conservation Club 2, 3; Pep Club 3,  
4; Homeroom Secretary, Treasurer 4.  
Plans to attend Gordon Keller School  
of Nursing.

ELLIS CECIL JOHNSON  
(Punchey)  
F. F. A. 1, 2.  
Wants to become a professional fight-  
er or welder.

FREDERICK MONROE JOHNSON, JR.  
(Goof Off, 1)  
Football 1, 2, 3, 4; Basketball 1, 2, 3;  
Hi-Y 4; Homeroom President 3, 4.  
Plans to attend a college of art and  
then help Walt Disney.

## CLASS OF '60

NANCY ANN JOHNSON  
Cheerleader J. V. 1, Varsity 2, 3, 4,  
Captain 4; Glee Club, Operetta 1, 2, 3,  
4; Class President 3, Vice-President 1;  
Student Council President 4; Beta Club  
2, Secretary 3, 4; Pep Club 1, 2, 3, 4;  
Secretary 2; Homecoming Attendant and  
Queen's Court 3; Senior Class Play 4.  
Wants to be medical technician.

JAN JONES  
Track 1, 2; Basketball 2, 4; Baseball 4;  
Football 1; Pep Club 1, 2, 4; Glee Club,  
Operetta 1, 2, 3, 4; Music Appreciation  
1, 2, 3, 4; Bible Appreciation 2.  
Wants to attend a junior or business  
college.

GORDAN PHILIP JORDAN  
(Phil)  
Boys' State 3.  
Plans to study at the University of  
South Florida and later be an Air Force  
pilot.

ROBERT JORDAN  
Will attend the University of Florida.

Page Thirty-One

BERNICE FAITH JOYCE  
(Bernie)  
Bible Appreciation Club 1, 2; Band 1,  
2, 3; Tri-Hi-Y 4; F.H.A. 4; Future  
Nurses 4.  
Will go to Southeastern Bible College,  
Lakeland, Florida.

ALFRED NELSON KEITH  
(Goo' Ol', II)  
Football 2, 3, 4; Hi-Y Treasurer 4;  
Boys' State 3.  
Plans to join the Navy and later be a  
mechanic.

JAMES HAHNS KERN  
(Chin)  
Office Training Club 3; Baseball 4;  
Football 2; Glee Club, Operetta 4.  
Will attend Tampa University.

DAVID JOHN KEYSER  
(Dave)  
Band 1, 2, 3, 4; Pep Club 1; Hi-Y 1, 2.  
Plans to attend military college.

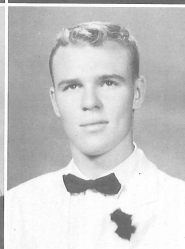
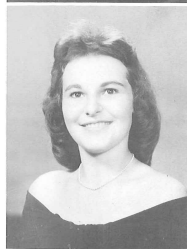
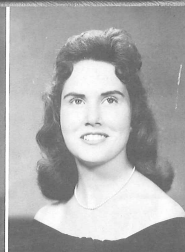
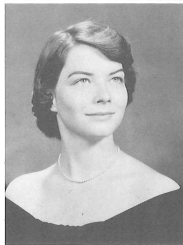
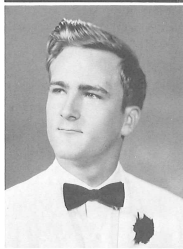
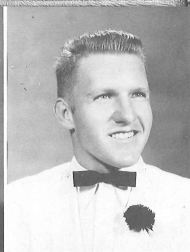
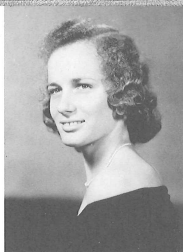
## CLASS OF '60

RACHEL FRANCES KIRKMAN  
(Hot Rod)  
Office Training Club 4; F.H.A. 1;  
Bible Appreciation Club 1.  
Marriage.

LINDA PRIM LARKIN  
Cheerleader J. V. 1, Varsity 2, 3, 4;  
Pep Club 1, 2, 3, 4; Bible Appreciation  
Club 1, 2, 3; Music Appreciation 1, 2, 3;  
Glee Club, Operetta 2, 3, 4; Notable 3;  
Student Council 1, 2; Homeroom Presi-  
dent 3, Vice-President 2; Tri-Hi-Y 3, 4;  
Class Secretary 1; Homecoming Queen  
4; Class Play 4.  
Plans to attend a college in the SOUTH!

HOWARD LAY

BONNIE BELLE LINGO  
(Bon)  
Bible Appreciation Club 1, 2; Pep Club  
4; Tri-Hi-Y 4; Annual Staff 4; Drama-  
tics Club 4; Class Play 4.  
Will be an airline reservationist or  
attend business school.



LOMA MARTELL LIPHAM  
Homeroom Secretary 1, 3; President  
2; Glee Club, Operetta 2, 3; Bible Ap-  
preciation 1, 2; Future Nurses 4; J. V.  
Cheerleader 1; D.C.T. Treasurer 4;  
F.H.A. Vice-President 1, 2; Pep Club  
2, 4; Senior Class Play 4.  
Will attend beautician school.

UVA MAXINE LOWE  
(Botchie)  
Transferred from Richlands High  
School. First Aid Program 1; D.E.I.  
Club 3.  
Pland to be a housewife after grad-  
uation.

SANDRA MCGOVERN  
(Sandi)  
Glee Club, Operetta 2, 3; Office Train-  
ing Club 3.  
Wants to attend the Business University  
of Tampa and be a secretary.

CHARLES CECIL McNARY  
Hi-Y 3, 4; Track 3; Banquet Waiter 2;  
Representative at University of South  
Florida Groundbreaking 3.  
Will attend Florida State University.

## CLASS OF '60

PATRICIA GAYLE MACKEY  
(Mac)  
Transferred from Ocala High School.  
Bible Appreciation Club 2; Glee Club,  
Operetta 3, 4; Future Nurses 4.

BARBARA RUTH MANN  
D.C.T. 4.  
Secretarial work.

CHARLOTTE CHRISTINE MARLOWE  
(Shorty)  
Beta Club 2, 3, 4; Tri-Hi-Y 3, 4;  
F.T.A. 3, 4; Glee Club, Operetta 4;  
Future Nurses 4; Pirate Log Staff 4; An-  
nual Staff 3; Banquet Waitress 2.  
Will attend Stetson or St. Leo College.

MAXINE OLIVIA MATTHIS  
Bible Appreciation Club 1, 2; F.H.A.  
2; Homeroom Treasurer 2; Glee Club,  
Operetta 2, 3, 4.

MILDRED MENGERTSON



LaVERA JUNE MERCER  
4-H 1, 2, 3; Future Nurses Club.  
Will attend Dell's Technology School  
and become a laboratory technician.

WILLIAM THEODORE MERCER  
(Ted)  
Transferred from Long Island, New  
York.

IRWIN S. MEYER  
Football J.V. 2, Varsity 3, 4; Band  
1, 2, 3, 4.  
Plans to make a career of the Air  
Force.

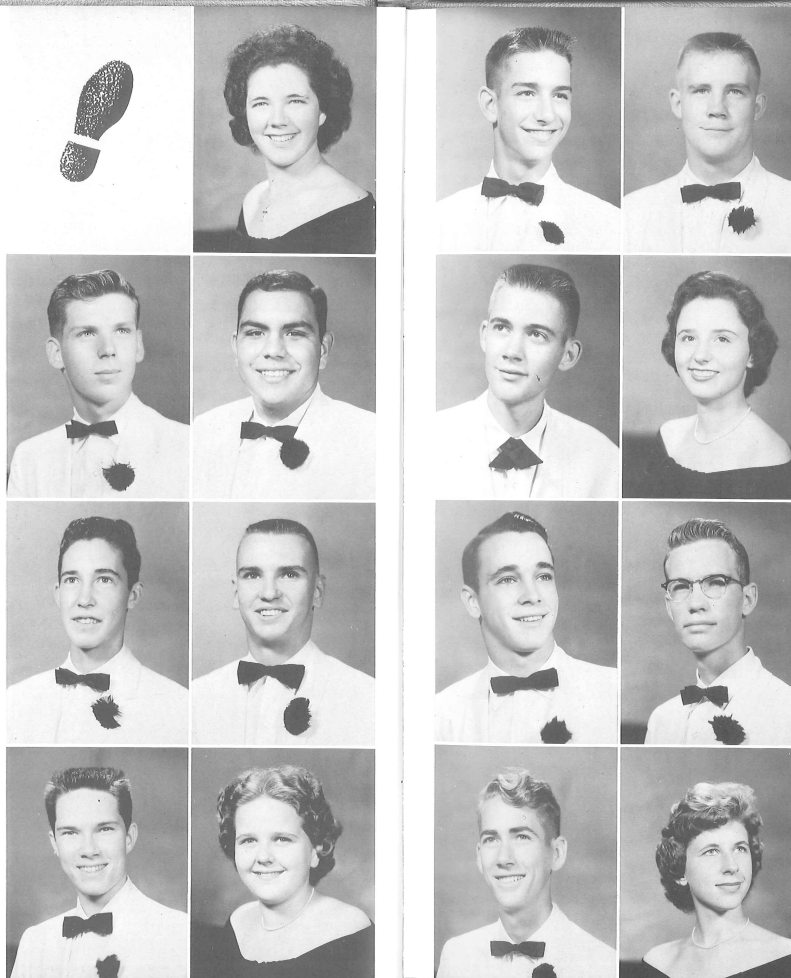
## CLASS OF '60

J. D. MITCHELL, JR.  
Agriculture 1, 4; Shop 4; Speech 4.

WILLIAM LEE MOBLEY, JR.  
(Remus)  
Shop 4.  
Will join the Armed Forces.

JAMES WARREN MOORE  
(Jimmy)  
Baseball 1, 2; Basketball 1, 2; Key Club  
2, 3, 4; Pirate Log Staff 3, 4; Pep Club  
4; Boys' State 3.  
Bookkeeping or secretarial work.

LANA SUE MORGAN  
(Meany)  
Pep Club 3, 4; Bible Appreciation Club  
2; Trailblazers 2, 3; Ground Observer  
Corps 1; Dramatics Club 4.  
Plans to study at the University of  
South Florida.



NELSON NABER

DOUGLAS MacARTHUR NEWSOME  
(Bull)  
Key Club 3, 4; Glee Club, Operetta  
4; Football 1, 2, 3, 4; Baseball 1, 2, 3, 4;  
Letterman's Club 1, 2, 3, 4; Pep Club 1,  
2, 3, 4.  
Wants to be a Highway Patrolman.

GERALD WILSON NEWTON  
Baseball 1, 2, 3, 4; Basketball 1, 2, 3, 4.

JOYCE ANN OAKLEY  
(Annie)  
Transferred from Gainesville High  
School. Pep Club 3, 4; Tri-Hi-Y 3,  
Social Chairman 4; Office Training  
Club, Project Chairman 4; Glee Club,  
Operetta 3; F. T. A. 4.  
Plans to become a bookkeeper.

## CLASS OF '60

THOMAS EDWARD OAKLEY, JR.  
(Tommy)  
Glee Club, Operetta 3, 4; Football 1,  
2, 3, 4; Key Club 3, 4; Bible Appre-  
ciation Club 1, 2, 3, 4; Pep Club 2, 3, 4;  
Track 3; Baseball 2; Hi-Y 3; F. F. A. 1,  
2, 3; Senior Class Play 4.  
Will attend Holmes Junior College.

LARRY ROGER PARKER  
D. C. T. 4.

PAUL EDWARD PIKE, JR.  
(Maynard Martin Smith)  
Agriculture 1, 2, 3, 4.

PATRICIA ANN PAYNE  
(Pat)  
Band, Majorette 1, 2, 3, 4; Drum Ma-  
jorette 4; J.V. Cheerleader, Captain 1;  
Pep Club 1, 2, 3, 4; President 4; Tri-Hi-Y  
3, 4; F. T. A. 2, 3, Secretary 4; Student  
Council 3; Glee Club 2; Future Nurses  
4; Bible Appreciation Club 1, 2; Home-  
room President 1, Secretary 2; Inside  
P. H. S. 2, 3.  
Plans to enter the secretarial field.

DAVID MICHEAL PRUETT  
(Mike)  
Bible Appreciation Club 1, 2, 3; F. T. A.  
4; Glee Club, Operetta 3, 4; Pep Club  
1, 2, 3, Vice-President 4; Key Club 4;  
Baseball 2; Letterman's Club 3, 4; Track  
1, 4; Pirate Log Staff 4; Class President  
4; Hi-Y 3, 4; Football 1, 2, 3, 4; Class  
Play 4.

Will enlist in the Armed Service.

GLENDIA RAY ROBERSON  
(Winnie)  
Pep Club 4; Tri-Hi-Y 3, 4; F. H. A. 1;  
Bible Appreciation Club 1, 2; Glee Club,  
Operetta 3, 4; J. V. Cheerleader 1;  
Homeroom President 2, Vice-President  
1; Future Nurses 4; F. T. A. 4; Senior  
Class Play 4.  
Plans to work in New York and later  
attend modeling school.

LOUIE FRED REEDER  
Basketball 2, 4; Track 2; Pep Club 2,  
4; Glee Club, Operetta 4.  
Plans to be a salesman.

FRANCES CAROLYN RONEY  
(Carole)  
Bible Appreciation Club 1, 2; F. H. A.  
2.  
Will study bookkeeping and account-  
ing at South Eastern Bible College.

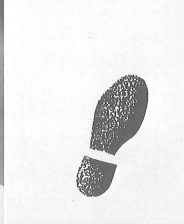
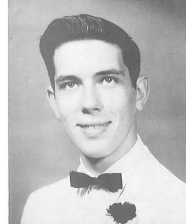
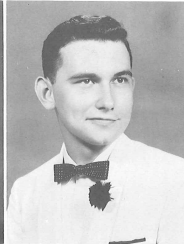
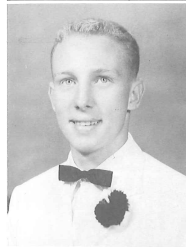
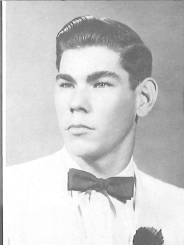
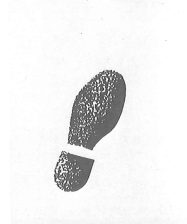
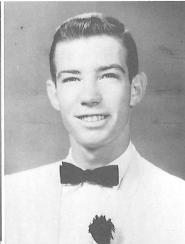
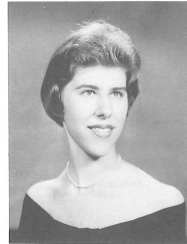
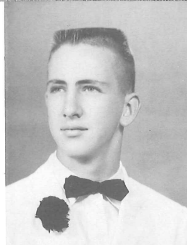
## CLASS OF '60

JUDITH ANN ROSE  
(Judy)  
Beta Club 2, 3, 4; F. T. A. 3, 4; Annual  
Staff 4; Banquet Waitress 2; Notable 3.  
Will study education at the University  
of Florida.

DENNIS W. RUFFING  
4-H 1, 2, 3, 4, President 2, Vice-Pres-  
ident 1; F. F. A. 1, 2, 3, 4; Hi-Y 3, 4;  
Glee Club, Operetta 4; Football 2, 3, 4;  
Baseball 1, 2, 3, 4.  
Plans to attend Annapolis Naval Acad-  
emy.

JAMES FRED SAWYER  
(Jimmy)  
F. F. A. 1.  
Will join the Air Force.

JO ANN SESSOMS  
(Jo)  
Pep Club 2, 3, 4; Student Council 1, 2,  
3; F. T. A. 3, Treasurer 4; Tri-Hi-Y  
3, Historian 4; Bible Appreciation Club  
1, 2; Future Nurses, Vice-President 4;  
Cheerleader J. V. 1, Varsity 3, Co-Cap-  
tain 4; Notable 3; Class Play 4.  
Plans to major in home economics at  
Florida State University.



WANDA MARIE SHANNON  
(Wanda)  
Office Training Club 4.  
Secretarial work and marriage.

WILLARD EUGENE SMITH  
(Smitty)  
Football 2.  
Plans to become a machinist.

ROY MELVIN STANCIL  
(Bud)  
F. F. A. 1, 2, 3, 4; Sentinel 4; Pep Club  
4; Basketball 1, 2, 3, 4.  
Wants to work for the State Plant  
Board on fire ants.

EUNICE FAY STEPHENS  
(Bobbie)  
F. H. A. 2.  
Plans to attend Tampa Business Uni-  
versity.

## CLASS OF '60

NELIDA STEWART  
F. H. A. 1; D. C. T. 4; Future Nurses 4;  
Bible Appreciation Club 1, 2.  
Will work as a clerk-typist.

RONALD JAMES STOUSE  
(Romie)

JIMMY MANNING STRICKLAND  
D. C. T. 4.  
Plans to enlist in the Air Force.

JOSEPH WILLIAM SULLIVAN  
(Joe)  
Football 2, 3, 4; Hi-Y 3, President 4;  
Key Club 2, 3, President 4; Baseball 1,  
2, 3, 4; Basketball 2, 3, 4; Student Council  
2, 3, 4; Vice-President 3; Pep Club 2,  
3, 4; F. T. A. 4; Class Vice-President 3;  
Letterman's Club 2, 3, 4.  
Will play professional baseball.

DAVID MICHEAL PRUETT  
(Mike)  
Bible Appreciation Club 1, 2, 3; F. T. A.  
4; Glee Club, Operetta 3, 4; Pep Club  
1, 2, 3, Vice-President 4; Key Club 4;  
Baseball 2; Letterman's Club 3, 4; Track  
1, 4; Pirate Log Staff 4; Class President  
4; Hi-Y 3, 4; Football 1, 2, 3, 4; Class  
Play 4.  
Will enlist in the Armed Service.

GLENDIA RAY ROBERSON  
(Winnie)  
Pep Club 4; Tri-Hi-Y 3, 4; F. H. A. 1;  
Bible Appreciation Club 1, 2; Glee Club,  
Operetta 3, 4; J. V. Cheerleader 1;  
Homeroom President 2, Vice-President  
1; Future Nurses 4; F. T. A. 4; Senior  
Class Play 4.  
Plans to work in New York and later  
attend modeling school.

LOUIE FRED REEDER  
Basketball 2, 4; Track 2; Pep Club 2,  
4; Glee Club, Operetta 4.  
Plans to be a salesman.

FRANCES CAROLYN RONEY  
(Carole)  
Bible Appreciation Club 1, 2; F. H. A.  
2.  
Will study bookkeeping and account-  
ing at South Eastern Bible College.

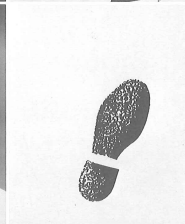
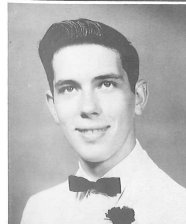
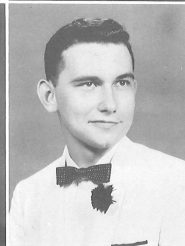
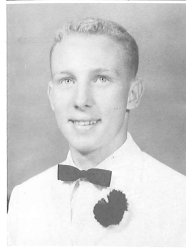
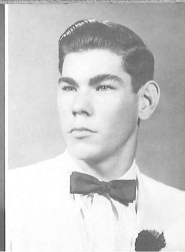
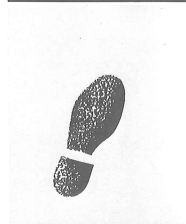
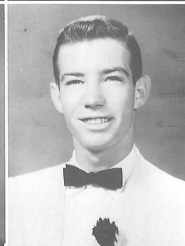
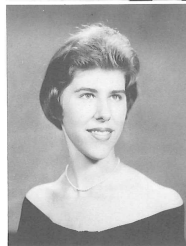
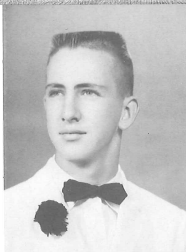
## CLASS OF '60

JUDITH ANN ROSE  
(Judy)  
Beta Club 2, 3, 4; F. T. A. 3, 4; Annual  
Staff 4; Banquet Waitress 2; Notable 3.  
Will study education at the University  
of Florida.

DENNIS W. RUFFING  
4-H 1, 2, 3, 4, President 2, Vice-Pres-  
ident 1; F. F. A. 1, 2, 3, 4; Hi-Y 3, 4;  
Glee Club, Operetta 4; Football 2, 3, 4;  
Baseball 1, 2, 3, 4.  
Plans to attend Annapolis Naval Acad-  
emy.

JAMES FRED SAWYER  
(Jimmy)  
F. F. A. 1.  
Will join the Air Force.

JO ANN SESSOMS  
(Jo)  
Pep Club 2, 3, 4; Student Council 1, 2,  
3; F. T. A. 3, Treasurer 4; Tri-Hi-Y  
3, Historian 4; Bible Appreciation Club  
1, 2; Future Nurses, Vice-President 4;  
Cheerleader J. V. 1, Varsity 3, Co-Cap-  
tain 4; Notable 3; Class Play 4.  
Plans to major in home economics at  
Florida State University.



WANDA MARIE SHANNON  
(Brat)  
Office Training Club 4.  
Secretarial work and marriage.

WILLARD EUGENE SMITH  
(Smitty)  
Football 2.  
Plans to become a machinist.

ROY MELVIN STANCIL  
(Bud)  
F. F. A. 1, 2, 3, 4; Sentinel 4; Pep Club  
4; Basketball 1, 2, 3, 4.  
Wants to work for the State Plant  
Board on fire ants.

EUNICE FAY STEPHENS  
(Bobbie)  
F. H. A. 2.  
Plans to attend Tampa Business Uni-  
versity.

## CLASS OF '60

NELDA STEWART  
F. H. A. 1; D. C. T. 4; Future Nurses 4;  
Bible Appreciation Club 1, 2.  
Will work as a clerk-typist.

RONALD JAMES STOUSE  
(Romie)

JIMMY MANNING STRICKLAND  
D. C. T. 4.  
Plans to enlist in the Air Force.

JOSEPH WILLIAM SULLIVAN  
(Joe)  
Football 2, 3, 4; Hi-Y 3, President 4;  
Key Club 2, 3, President 4; Baseball 1,  
2, 3, 4; Basketball 2, 3, 4; Student Council  
2, 3, 4, Vice-President 3; Pep Club 2,  
3, 4; F. T. A. 4; Class Vice-President 3;  
Letterman's Club 2, 3, 4.  
Will play professional baseball.

CAROLE ANN SUMNER  
(Carole)  
Bible Appreciation Club 1, 2; Tri-Hi-Y  
3, 4; F. H. A. 2; Office Training Club,  
Treasurer 4.  
Plans to be a Secretary.

LINDA LEIGH SWEAT  
(Linda)  
Glee Club, Operetta 2, 3, 4; Tri-Hi-Y  
4; Library Club 1.  
Secretarial work.

BEVERLY JEAN TEBB  
(Bev)  
Transferred from Hillsborough High  
School.  
Will attend the Business University of  
Tampa.

ERMIE CLAUDE THOMAS  
(Wormey)  
Basketball 2, 3, 4; Bible Appreciation  
Club 2; D. C. T. 4.

## CLASS OF '60

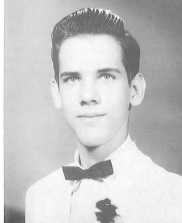
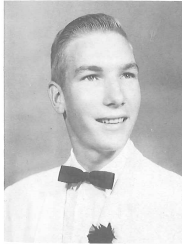
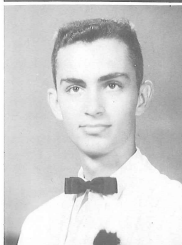
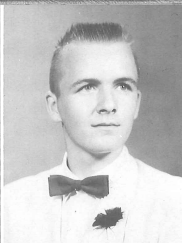
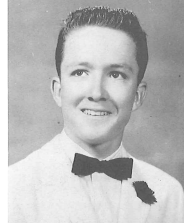
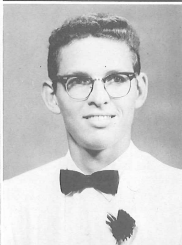
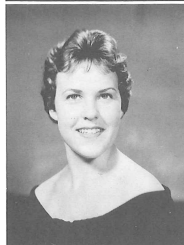
MARISE CECILIA TILLMAN  
(Cissy)  
Cheerleader 1; Class Vice-President 1;  
Majorette 2; F. H. A. 2; Art Club 3;  
Homeroom Secretary 3; F. T. A. 3; Safe-  
ty Club 3; School Paper 1; Banquet  
Waitress 2; Glee Club 1, 3, 4; French  
Club 3.  
Will study elementary education at  
University of Tampa.

BURNEY ROBERT TOMPKINS  
Trailblazers Club; Pirate Log Staff.  
Will attend Southern Missionary Col-  
lege and become a biology teacher.

DELMA TOOLES  
(Dale)  
Football 1; Baseball 1.  
Will attend the University of Tampa.

VELMA TOOLES  
(Terry)  
Glee Club, Operetta 3, 4.  
Plans to be a model or beautician.

Page Thirty-Eight



VIVIAN TOOLES  
(Viv)  
Glee Club, Operetta 3, 4.  
Plans to become a telephone operator.

DENNIS BARRY TURNER  
Band 1, 2, 3, 4, Captain 3, 4.  
Will attend the College Conservatory  
of Cincinnati.

WILLIAM EDWARD WALDROFF  
(Billy)  
Football 1, 2; Track 1; Glee Club,  
Operetta 3.  
Will attend Georgia Tech. and become  
a technical engineer.

PATRICIA DALE WEBB  
(Trish)  
Annual Staff 4; F. H. A. 1, 2; Bible Ap-  
preciation Club 1, 2; Pep Club 4;  
Tri-Hi-Y 3, 4; Pirate Log Staff 3.  
Plans to be a bookkeeper and later  
attend modeling school in Philadelphia.

## CLASS OF '60

JESSE MARVIN WEEKS  
(Toby)  
F. F. A. 1, 2, 3, 4; 4-H 1, 2, 3; D. C. T.  
4; Baseball 1; Softball 2, 3.  
Will attend the University of Florida  
School of Forestry.

MARIE ELLEN WEINBUCH  
(Dimples)  
Glee Club, Operetta 2; Office Train-  
ing Club 4.  
Plans to attend the University of  
Tampa.

ROBERT GEORGE WHISNANT  
D. C. T. 4; Bible Appreciation Club  
1, 2.  
Plans to be a Corporal in the Army.

FRANCES JEANETTE WHITAKER  
(Bet)  
F. H. A. 1, Social Chairman 2, 3, 4;  
F. T. A. 3, 4; Future Nurses 4; Pep Club  
4; Tri-Hi-Y 3, 4; Glee Club 2, 4; Bible  
Appreciation Club 2; Cheerleader J. V.  
2, Varsity 4; Homeroom President 2,  
Vice-President 1; Class Play 4.  
Will work in New York and later be an  
elementary teacher.

SANDRA ANN WILDER  
(Sandi)  
Student Council 1, 2, 3, 4; F. H. A. 1,  
2, 3; Cheerleader 2, 3; Pep Club 2, 3, 4;  
Glee Club, Operetta 4; Bible Appre-  
ciation Club 2; Trailblazers 2, 3; Drama-  
tics Club 4; Future Nurses 4.  
Will attend Stetson University.

SARAH KAY YOUNG  
(Kay)  
J. V. Cheerleader 1, 2; F. H. A. 1;  
Tri-Hi-Y 3, 4; Glee Club, Operetta 2,  
3, 4; Bible Appreciation Club 1, 2;  
F. T. A. 4.  
Will attend the Business University of  
Tampa.

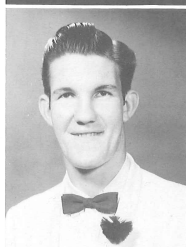
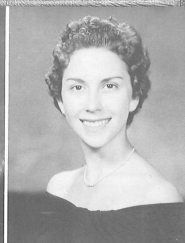
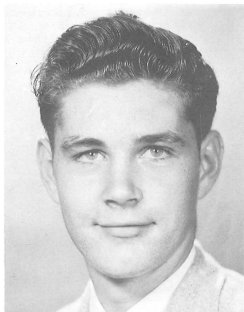
FRED ANDREW WILSON  
(Bear)  
Class Secretary 2; Pep Club 1, 2, 3, 4;  
Key Club 3, 4; Football 1, 2, 3, 4; Let-  
terman's Club 3, 4.

BILLY RAY WORLEY  
(Bill)  
F. F. A. 1.  
Plans to be a farmer.

## SENIORS

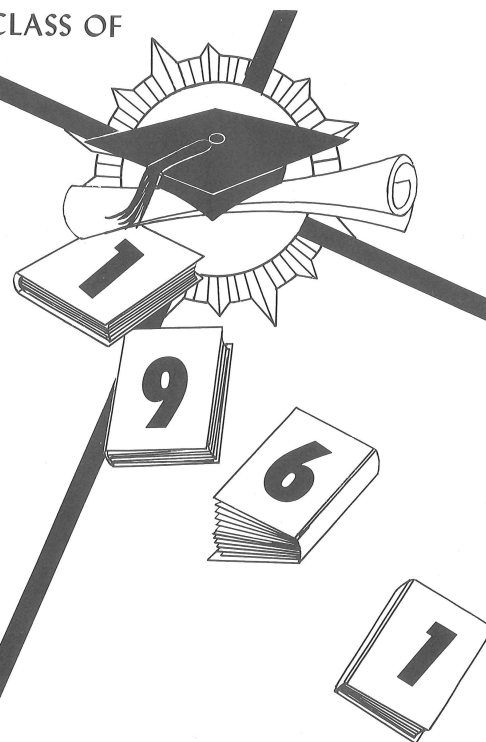
### IN MEMORIA

RICHARD GRASER



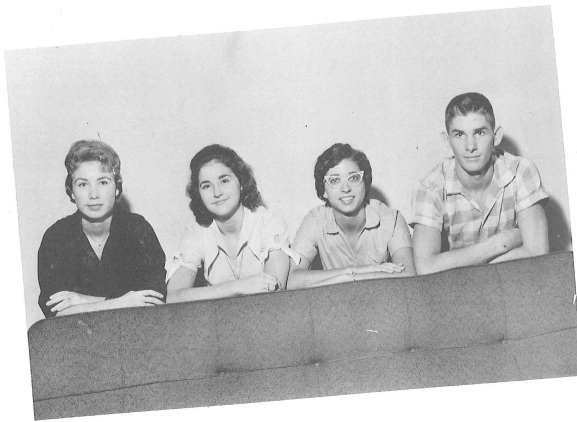
DWIGHT BOYETT

CLASS OF



# JUNIORS

# OFFICERS



Carol Lee Madill, Treasurer; Carmen Herring, Secretary; Gail Lindsay, President; Fred Merritt, Vice-President.



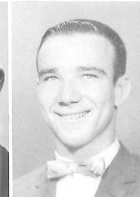
## CLASS SPONSORS

Mrs. Bertha McKillips  
Mr. Albert Smith

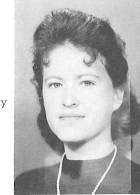
Dennis Adams  
Phillip Adams  
Irene Allen  
John Alston



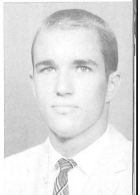
Charlotte Anderson  
Dale Anderton  
Marcia Baldwin  
Connie Barthle



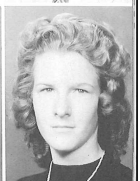
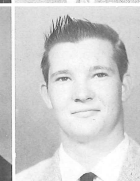
Betty Batten  
Judy Beckum  
Virginia Bellamy



Barbara Bentkowski  
Tommy Billings  
Ted Blommel  
Herbert Boltin



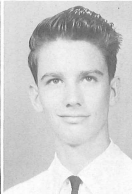
Sandra Boyett  
Jimmy Bradshaw  
Ann Brinson  
Sylvia Brooks





Hank Bruning  
Aubry Bryant  
Arthur Bumside  
Rose Butler

Robert Croft  
Thomas Croft  
Jeanette Davenport  
Ronnie Davis



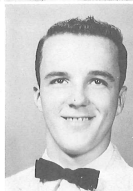
Alma Buttram  
Amy Campbell  
James Campbell  
Ed Capes

Lamar Dees  
Gary Dixon  
Larry Dorcik  
Patricia Driggers



Gary Carlson  
Billy Carlton  
Ken Carr

Billy Duncan  
Marshall Duncan  
Randy Dupree



Gerald Carter  
Ruby Childers  
Janet Coates  
Sue Colburn

Jimmy Enfinger  
Billy Eates  
Jack Fowler  
Thomas Fox



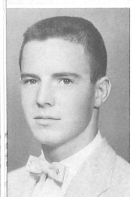
Virginia Comell  
Wayne Coulter  
David Cramer  
Franklin Croft

Margo Francisco  
Barbara Franzel  
David Gant  
Carlos Gaskin

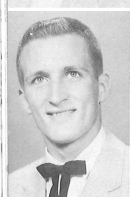




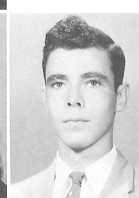
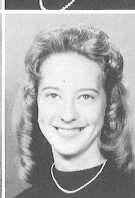
Roy Gaskin  
Penny Garverick  
Virginia Geiger  
Jerry Geohagen



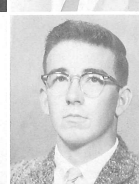
Kirk Gibson  
Elizabeth Gillett  
Fern Goodwin  
Robert Graham



Marvin Greene  
Ronald Griffin  
Shirley Groover

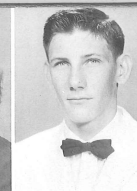


Wayne Groover  
Jimmy Hamilton  
Betty Hampton  
Jimmy Harris



Paul Herndon  
Carmen Herring  
Newton Hillman  
Hughes Hines

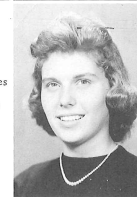
Martha Hines  
Donna Hodges  
Mack Holmes  
Charles Homan



Charles Howell  
Sharon Hutcherson  
Tracy Hyer  
Linda Johnson



Dee Ann Jones  
Janet Jones  
Ronald Jones

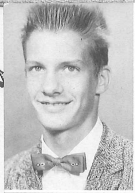


Shirley Kirby  
Carolyn Kirkland  
Sharon Koenig  
Sandra Lamke



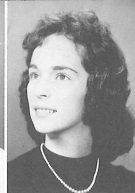
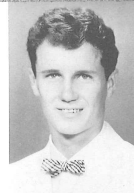
Nancy Lauramore  
Edith Law  
Charles Lease  
Jerry Leavins





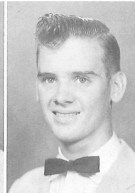
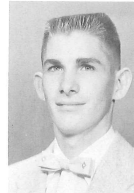
Richard LeCates  
Sharon Lee  
Glenda Lester  
Gail Lindsay

William Martin  
Janice Mathis  
Gertrude Mengerson  
Mary Ann Mercer



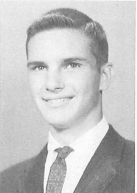
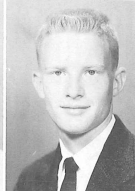
Chris Lockman  
Richard Lovelace  
Louis Lovell  
Don McAllister

Fred Merritt  
Roy Miner  
Bobby More  
Kenneth Morgan



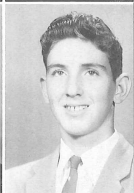
William McCarthy  
John McGowan  
Linda McKee

James Morrow  
Jim Newland  
Laney Overstreet



Patricia McKinney  
Earl McKenzie  
Shirley McLemore  
Dale McLendon

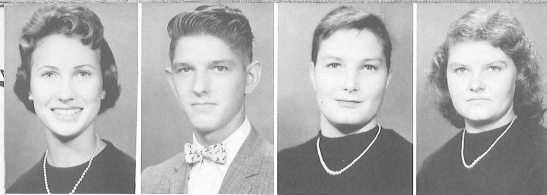
Shirley Overstreet  
Paul Owens  
Emma Parrish  
Albert Pennington



Carol Lee Madill  
Judy Madill  
Vincent Maggio  
Sandra Mansfield

Joyce Peterson  
Mary Petway  
Cardene Phillips  
Roberta Pickert





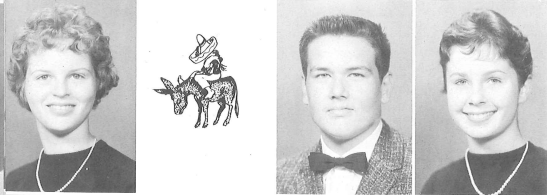
Dianne Pike  
Fred Pike  
Katherine Pinkston  
Pearlie Mae Ponder



Ross Purkis  
Lois Ramsey  
Bessie Riddick  
Archalene Redfern



Barbara Register  
David Roberts  
John Rogers

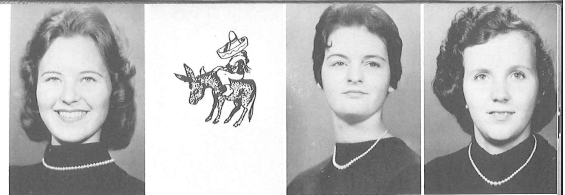


Glenda Rosier  
Joyce Sasser  
William Sewell  
Ann Sistrunk

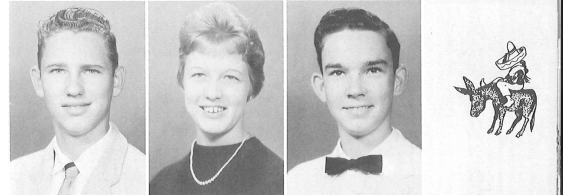


Margaret Slay  
Shirley Southerland  
Jo Ellen Spears  
Pete Spoto

Ernestine Strickland  
Robert Strickland  
Carol Stone  
Mary Sullivan



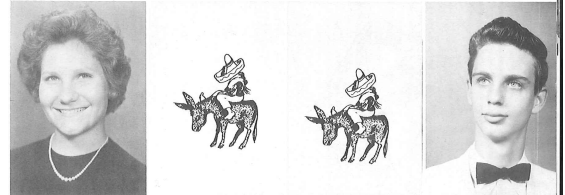
Sam Surratt  
Ann Swartzlander  
Wayne Sweat  
Thomas Tedder



Patricia Thomas  
Eddie Thompson  
Charles Thrower

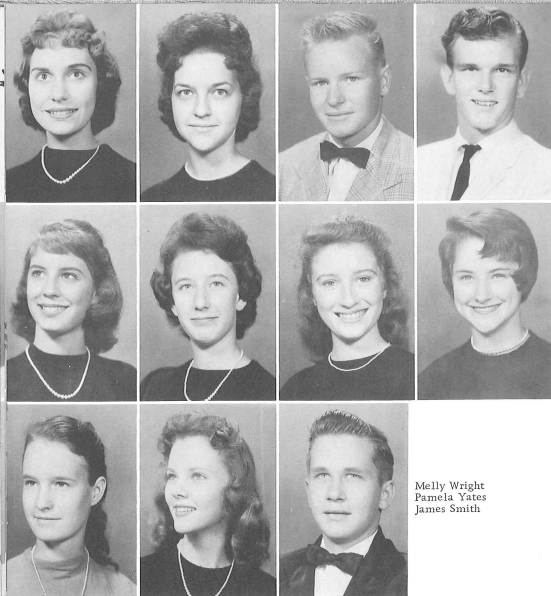


Jeannette Townsend  
DuWayne Tyson  
Mildred Vann  
Tom Vogel



Frances Wall  
Will Walters  
Jeannette Ward  
Julian Weaver

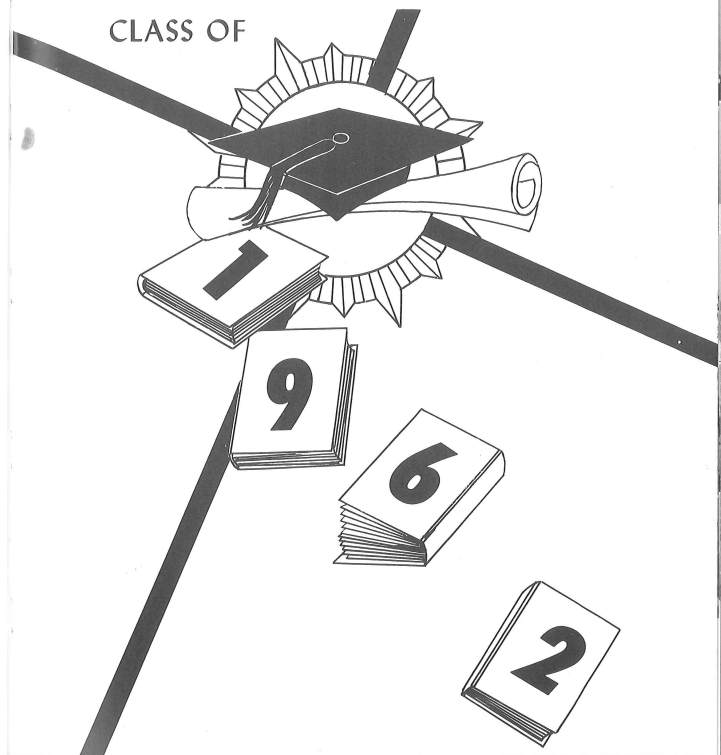




Norma White  
Shirley Whitten  
Farris Williams  
Robert Williams

Suzanne Williams  
Elsie Wilson  
Florence Wilson  
Judy Wilson

Melly Wright  
Pamela Yates  
James Smith



CLASS OF

SOPHOMORES

# OFFICERS



Billy Backlinie, Treasurer; Janet Denlinger, Secretary; Joyce Douglas, Vice-President; John Merritt, President.



## CLASS SPONSORS

Miss Lillian Martin  
Mr. Gary Jordan

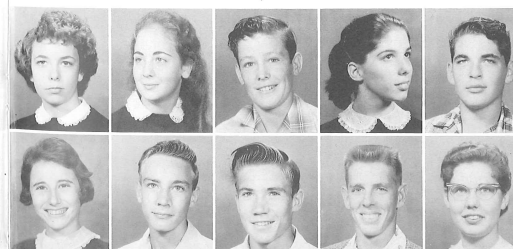
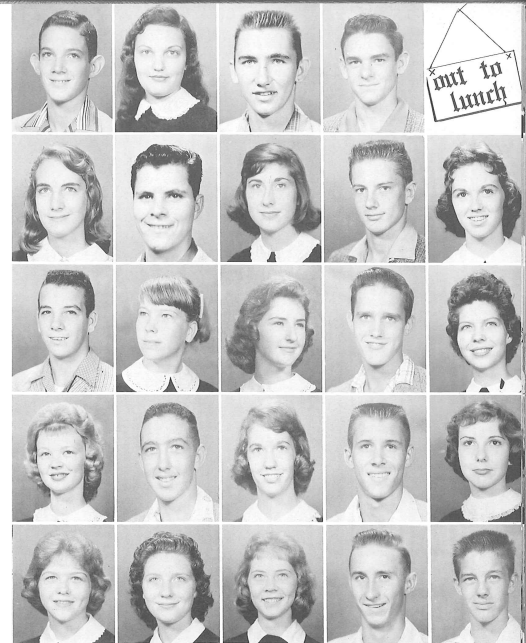
Malcolm Anderson  
Yvonne Atkins  
Bobby Auton  
Billy Backlinie  
Charlene Backlinie

Sylvia Baker  
John Baldree  
Laura Barco  
Eugene Barr  
Nancy Barry

Gary Bates  
Alice Batten  
Shirley Benefield  
Larry Benson  
Vesper Best

Cynthia Beverly  
John Blommel  
Carolyn Boltin  
John Boltin  
Judy Bottorff

Alice Boyett  
Jill Boyett  
Linda Boyett  
Danny Boyko  
Chester Bradshaw



Donna Breeden  
Charlotte Brinson  
Chester Brooks  
Darlene Brown  
Mike Brown

Ranae Brown  
Ronald Brown  
Roy Brown  
Charles Bruning  
Judy Bryant



Mary Bryant  
Morris Bryant  
Patsy Bryant  
Robert Bryant  
Sara Bryant



Betsy Buchholz  
John Bumham  
Marsha Bunside  
Max Campbell  
Diane Carlson



Robert Carr  
Judy Carter  
Ellen Caruthers  
Judy Case  
James Childers

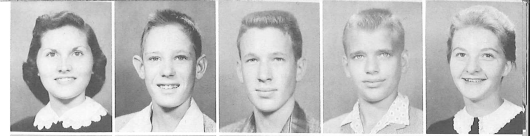


Judy Clark  
Ann Collins  
Jean Collins  
Linda Cooper  
Sandra Cooper



Milton Corbin  
Ed Cox  
James Cramer  
Jerry Crawford  
Margaret Cribbs

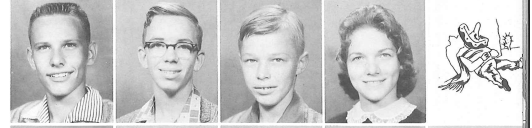
Joyce Douglas  
Harry Driggers  
Lee Dudley  
Norman Elder  
Judy Eller



Sue Ann Engle  
Charles Evans  
Shelton Evans  
Betty Faircloth  
Billy Faulk



Mike Flannery  
James Fleming  
Raymond Foss  
Agnes Fowler  
Billy Franks



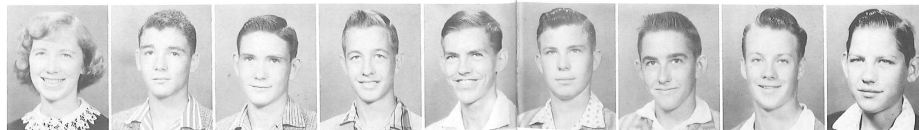
Grant Franzel  
Betty Fudge  
Gerald Gantner  
Marie Gay  
Gerald Giddens



John Glover  
Charles Golladay  
Karen Green  
Henry Griffin  
Marie Hale



Marie Croft  
Darrell Crutcher  
Don Crutcher  
Fred Czermer  
Richard Daskiewicz



James Harris  
James Harvey  
Lynn Hicks  
Clinton Hobbs

John Davis  
Janet Dealinger  
Maxine Denton  
William Ditter  
George Donett



Nellie Hooks  
Agoston Horvath  
Earl Hughes  
Robert Iwerson



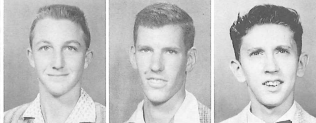
Robert Jamison  
Nevelin Jetton  
James Roy Johnson  
Ann Joyce  
Eleanor Kelly



Margaret King  
Mike King  
Doris Langston  
Jon Larkin  
Mary Lease



Rex Levey  
Danny Lloyd  
Janet Lombardo  
James Loy  
Laura Luckenback

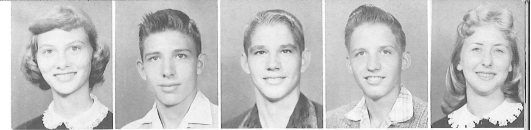


Patsy McGill  
Don McKean  
Warren McKendree  
Robert McKinstry  
Robert Merchant



John Merritt  
Ruby Merritt  
Esther Messick  
Jerry Mitchell  
Nelson Morrow

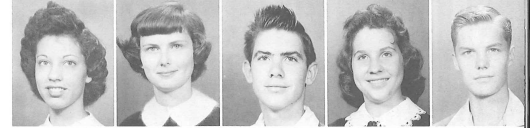
Fay Peace  
Robert Peterson  
Clinton Peterson  
Richard Petrie  
Sandra Pitts



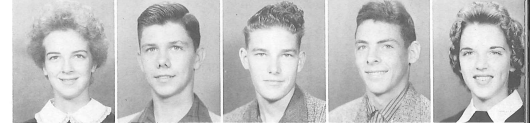
Carolyn Ploof  
Barry Puckis  
Roy Purvis  
Larry Pyle  
Hassan Ramadan



Evelyn Redbrook  
Sarah Reddick  
James Reedy  
Judy Rhoden  
Terry Rhymer



Anita Ritter  
Edge Roberson  
Don Roberts  
Jerry Roney  
Ree Roseman



Arlene Runyan  
Catherine Russell  
Linda Sasser  
Elizabeth Sawatsky  
Joan Shannon



Dan McDaniel  
Jim Murphy  
Eugene Myers  
Mercedes Myers  
Pat Nicolai

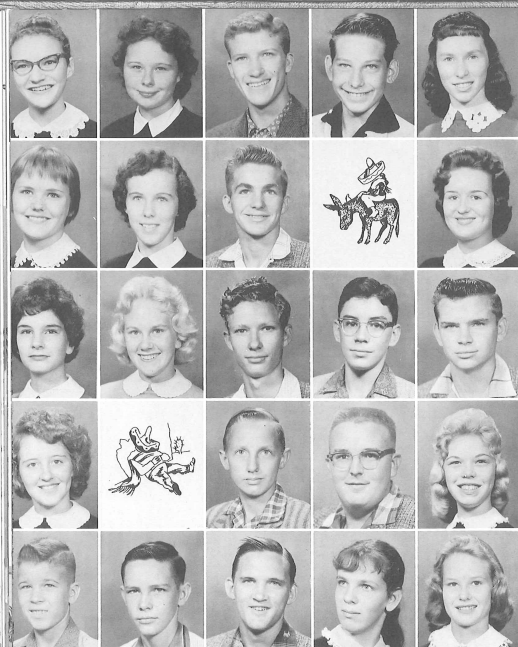


Don Simpson  
Pat Simons  
Alvin Smith  
James Smith

Laura Newton  
Lila Norris  
Ronald Page  
Reggie Parker  
Charles Parish



Patricia Sonders  
Mary Sparkman  
Harry Spivey  
Sophia Spoto  
Joyce Stanhill



Beverly Staton  
Dottie Stout  
Kenneth Strawbridge  
John Strobaugh  
Patsy Strickland

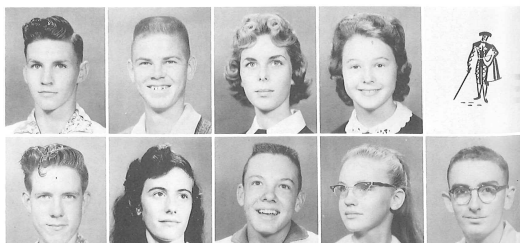
Jean Suber  
Pat Sullivan  
James Swann  
Jackie Sweat  
Joyce Sweat

Julie Taylor  
Barbara Tonkin  
Larry Thomason  
Bobby Tesar  
Jimmy Tolar

Emice Toole  
Colin Tucker  
Malcolm Tucker  
Eugene Ullrich  
Merrill Waldron

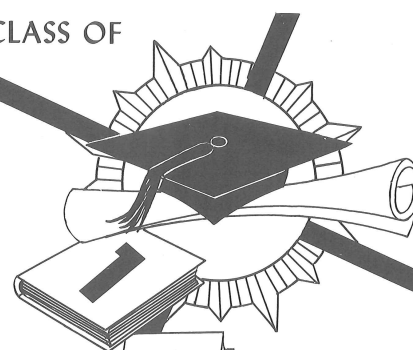
Richard Ward  
James Watson  
William Watson  
Ruth Whisnant  
Velma White

Ronald Whitman  
Barry Williams  
Janet Williams  
Carolyn Wilson  
Rocky Wilson



Ronald Wilson  
Loucretia Woodham  
Tom Wright  
Michelle Young  
Don Jenkins

CLASS OF



FRESHMEN

# OFFICERS



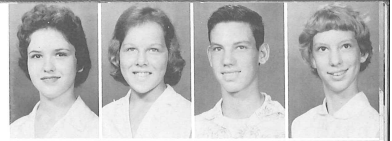
Lawrence Dees ----- President  
 Ronnie Oakley ----- Vice-President  
 Pat Brooks ----- Secretary-Treasurer



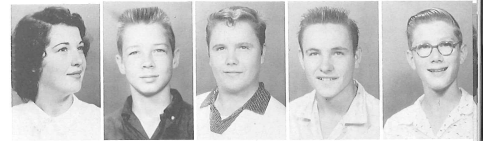
## CLASS SPONSOR

MRS. ANN HENDERSON

Adams  
 Altman  
 Amison  
 Anderton



Baker  
 Baldwin  
 Ballard  
 Barnes



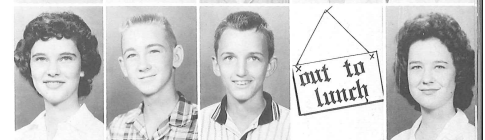
Barthle  
 Batton  
 Beagles  
 Beall  
 Beaver



Best  
 Blankenship  
 Blocker  
 Boyakin  
 Boyd



Bozett  
 Brannon  
 Brinson  
 Brommell  
 Brooks

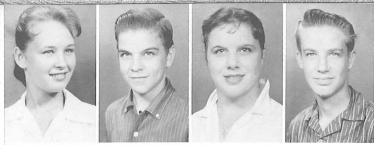


Brown  
 Brown  
 Buchanan  
 Bullington  
 Campbell

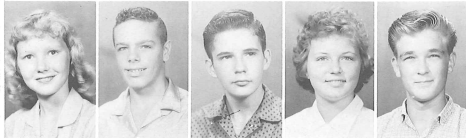


Capes  
 Carlton  
 Carpenter  
 Caruthers





Chase  
Chapin  
Chapin  
Childers



Clark  
Cogburn  
Collins  
Connell  
Connell



Coon  
Cooper  
Consey  
Crews  
Croft



Croley  
Crook  
Crump  
Curlington  
Caerner



Davenport  
Davis  
Dees  
Dow  
Dewey

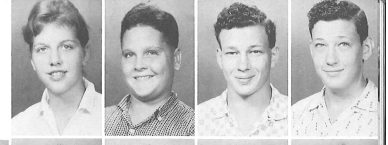


Dieffenwierth  
Duncan  
Dyess  
Egbert  
Etheridge



Etheridge  
Fagen  
Ferguson  
Ficquette

Flannery  
Folkes  
Foster  
Foster



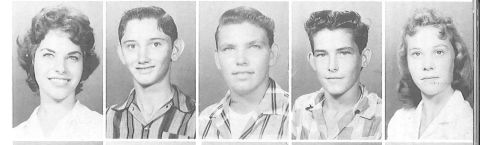
Fowler  
Fox  
Foxworth  
Fudge  
Gaskin



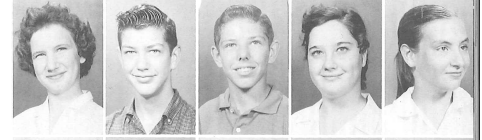
Gaskin  
Gay  
Ghiselin  
Gibson



Gillett  
Goolsby  
Gordan  
Gordan  
Graham



Gude  
Hall  
Hall  
Hamilton  
Hammonds



Handee  
Harris  
Harris  
Hart  
Hatton



Hayes  
Henderson  
Henry  
Herrin





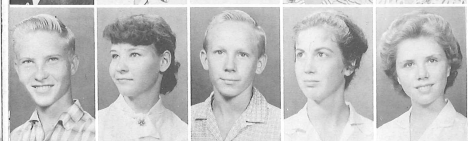
Hicks  
Hines  
Hooks  
Hughes



Hughes  
Huffstutler  
Jarvis  
Jenkins  
Johns



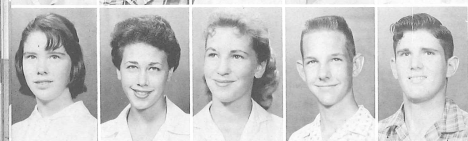
Johnson  
Johnson  
Jones  
Jones  
Kauffman



Keith  
Kirkland  
Lane  
Larkin  
Lauk



Law  
Lawrence  
Leavins  
Lewellen  
Lewis

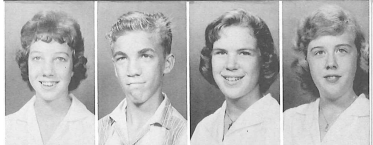


Long  
Lovett  
Lowe  
Lowery  
Luffman



McCarthy  
McGuire  
McKendree  
McNatt

Mann  
Mercer  
Mercer  
Meyer



Mills  
Mistretta  
Moody  
Morgan  
Morris



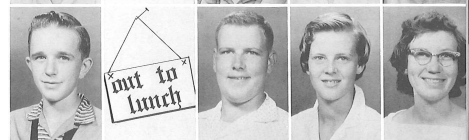
Mullins  
Mullins  
Nelson  
Nelson  
Nelson



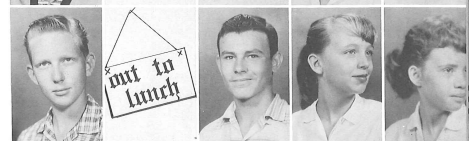
Newman  
Newton  
Nowling  
Oakley  
Oakley



O'Neal  
Osborn  
Owens  
Parish  
Parker



Parker  
Patterson  
Pearce  
Pemberton  
Peterson



Pittman  
Pittman  
Pollock  
Posey

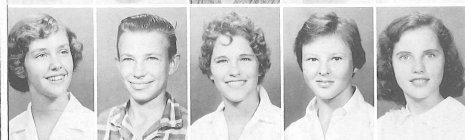




Pyle  
Redfern  
Reffuge  
Rhoden



Rhoden  
Rice  
Rinaldi  
Rinaldi  
Roberts



Roberts  
Robbinette  
Rogers  
Rosier  
Russell



Sabitelli  
Sanders  
Sargeant  
Slater  
Simonds



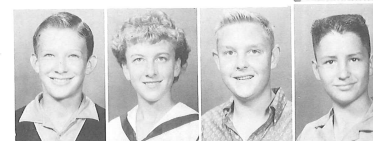
Smith  
Spainhour  
Southernland  
Spears  
Staeben



Stanberry  
Stephens  
Stewart  
Stewart  
Stone



Strickland  
Sumler  
Surratt  
Surrency



Thrower



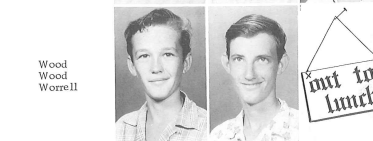
Walsh  
Walters  
Watson



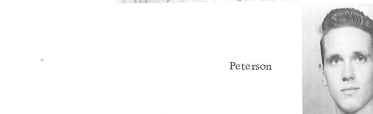
Webb  
Webb  
White  
Wilder



Williams  
Williams  
Wilson

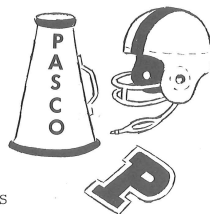


Wood  
Wood  
Worrell



Peterson





#### TO THE DEPARTING SENIORS

Translations rendered,  
Essays quite neat,  
Theorems all proven,  
Assignments complete.

Quick, mirthful moments,  
Forever past.  
Hopeful, swift glances,  
Lost in the blast.

Sweet teens' perceptions  
Forced now along,  
Replaced by maturity,  
Stodgy and strong.

Are there no questions?  
No reasonable doubt?  
Someone ask somebody,  
"What's life all about?"

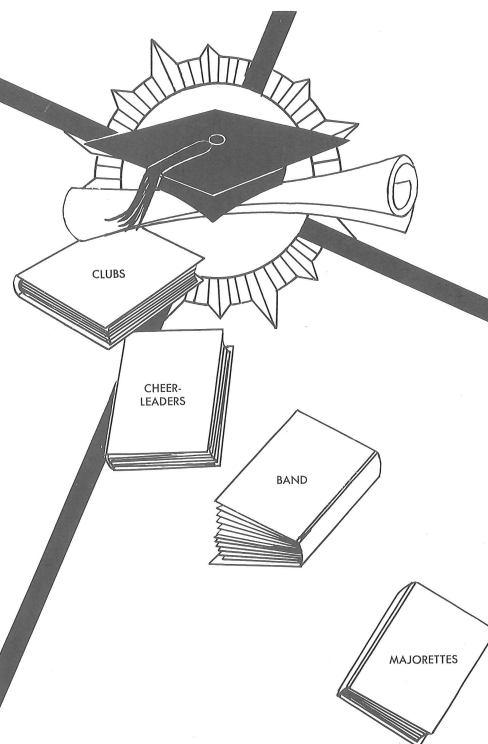
Ah, yes! That's a good one;  
I'm glad that you asked,  
For man is an entity,  
And must find God by himself.

You mean no solution?  
No rules for the game?  
It is only that you  
Must find God all the same.

J. Hetrick



Page Seventy



## ACTIVITIES



## BAND

Mr. Charles J. Corbin  
Director

Our Pasco High School Band has done much this year, as always, to add spirit, color, and gaiety to our football games, parades, and other school activities. We are very proud of our band with its outstanding talent and able director.

Page Seventy-Two



## WOOD WINDS

## BRASS SECTION





**PERCUSSION SECTION**

**MAJORETTES**



**VARSITY CHEERLEADERS**

Nancy Johnson

Jeanette Whitaker, Rita Brown, Edna Caruso

Joann Sessoms, Judy Madill, Archalene Redfern

Kay Clements, Linda Larkin



HI-Y

HI-Y  
The Hi-Y Club is a Christian organization for boys. It helps to create, maintain, and extend good character. Mr. Floyd Philmon is the sponsor.



F.  
N.  
A.



The Future Nurses Club has come to our school for the first time this year. We owe many thanks to Mrs. Henderson, Mrs. Clay, and Mrs. Mercer for making this possible. This club is to stimulate interest in nursing as a career. The members make field trips to hospitals and clinics and help in research and examinations in the schools and for public health service.



The Office Training Club, sponsored by Mrs. Wilma Peden, was organized in 1953. Its purpose is to stimulate interest in business careers.



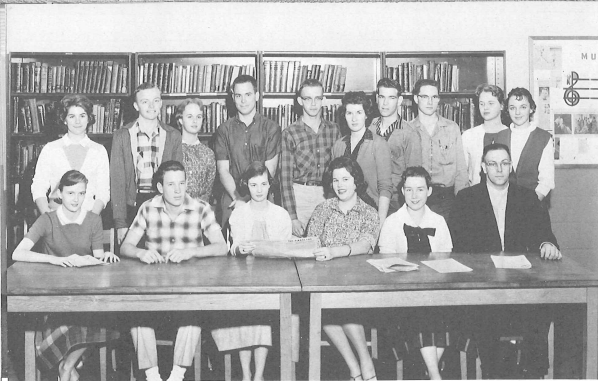
The Library Club works together with Miss Hale to help us get the books we want easily and quickly. We appreciate their hard work.  
The 4-H Club (not pictured) is for boys and girls who are interested in agriculture, homemaking, and various other subjects. Their main object is "To Make The Best Better."



The D. C. T., Diversified Cooperative Training, is an organization which works hand in hand with businesses in town and provides work for students for which they can receive school credit. Mrs. Ann Henderson is the sponsor.



The F.F.A. is one of our oldest clubs. It has encouraged leadership among the high school boys who have enrolled in Vocational Agriculture. Mr. Floyd Philmon is the sponsor. Keep up the good work, boys!



#### PIRATE LOG STAFF

The Pirate Log, the school newspaper, has done a wonderful job of keeping us informed about the happenings at Pasco High. We give our congratulations to Mr. Hetrick and his staff.



The Dramatics Club, sponsored by Miss Lillian Martin, is one of the newest clubs at our school. We are confident that they will provide us with much interesting entertainment. We wish the club a long and prosperous career.



The Key Club is a service organization sponsored by the Kiwanis Club. The chief objectives of the club are projects for the community and the school. Social activities are also carried on. The club has been active in Pasco High for over ten years. Mr. Shepard is the sponsor.

The Student Council, the student governing body of Pasco High, was organized sixteen years ago. Through the years they have done an outstanding job of making rules and regulations to guide the students. Nancy Johnson, the president, and Mr. Jordan, the sponsor, have done a great job.





## GLEE CLUB



The Glee Club, directed by Mrs. Byrd, has this year, as in the past, brought us several programs of outstanding musical entertainment. This year's productions included the Christmas Program and the musical comedy

"Li'l Abner." Our congratulations to Mrs. Byrd and her club for a wonderful job.



## THE PEP CLUB

The sponsors of the Pep Club are Mr. Royce Johnson and Miss Pat Blair. Due to their leadership and the hard work of all, the Pep Club has achieved its goal of promoting school spirit in football, baseball, and basketball.





## F. T. A.

Officers

### Senior Members

The F. T. A., Future Teachers of America, has been in existence for several years at Pasco High. This club is for students who are planning to become teachers. They gain experience and are a great help to the schools by substituting when teachers must be absent. We owe many thanks to Mrs. Bertina McKillips for her many efforts and abilities which she so generously shared with the members of this club to prepare them for the job of 'teacher of tomorrow.'



## F. H. A.



Officers



The Future Homemakers of America has been in existence at Pasco for over ten years. The F. H. A. helps girls develop leadership and good citizenship, and helps to foster better family relationships. The co-sponsors of the F. H. A. are Mrs. Fingerhut and Mrs. Etty.





## TRI-HI-Y

Officers

Mrs. Peden has been responsible for our service club, the Tri-Hi-Y. This club has been active in our school for the past two years and has participated not only in school functions, but also in the Polio Drive and other services. Their slogan is: "Pure Thoughts, Pure Words, and Pure Actions."



Officers



Jim Newland, President, initiating new member, Judy Madill.



The Beta Club is an honor organization. To belong to this club, one must have and maintain an A-B average. Mr. Edward Mylod is the new sponsor of the Beta Club.

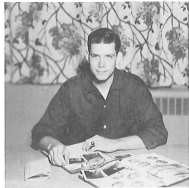
## BETA CLUB



## ANNUAL STAFF



Janet Jones ----- Junior Editor  
Mr. Julson Hetrick ----- Sponsor  
Judy Rose ----- Senior Editor



JIM GEIGER  
Sports Editor



VIRGINIA GEIGER  
Activities Editor



KEITH DUPREE  
Art Editor



PATRICIA WEBB  
BONNIE LINGO  
Feature Editors



Editorial Staff - Carolyn Clark, Billy Estes, and  
Nancy Barfield. Not pictured - Rita Brown.

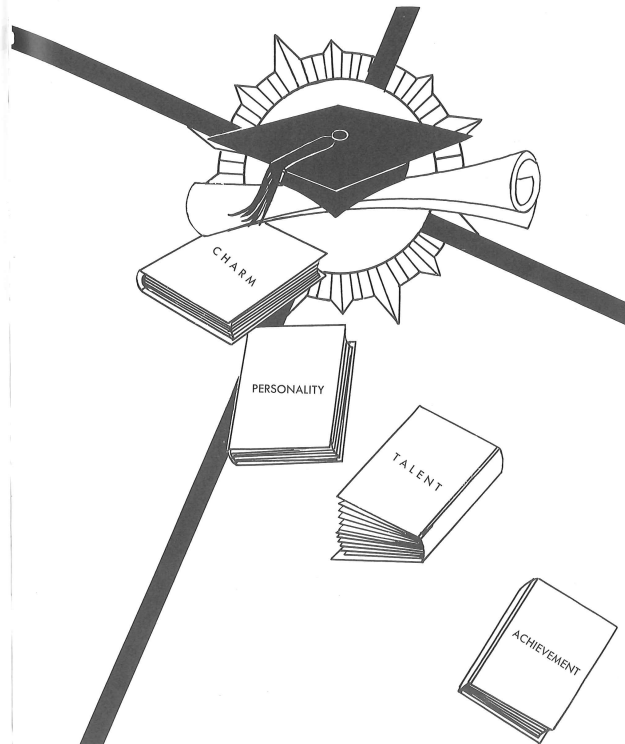
### AD STAFF

Seated - Martha Hines ----- Manager

Left to Right: Dick LeCates, Roberta Pickert,  
Jim Enfinger, Nancy Barry, and Charles Lease.



Page Eighty-Eight



## HALL OF FAME



**KING AND QUEEN**

Joe Sullivan and Linda Larkin

**SENIOR COURT**



Patricia Payne, Douglas Newsome  
Ronnie Harrell, Nancy Johnson



# BEST PERSONALITY

Carole France  
Ronnie Harrell

# BIGGEST FLIRTS

Douglas Newsome  
Loma Lipham



# BEST ALL 'ROUND MOST POPULAR

Nancy Johnson  
Joe Sullivan



# MOST SCHOOL-SPIRITED

Mike Pruett  
Jo Ann Sessoms



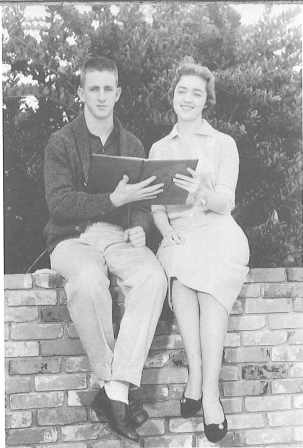
# MOST UNFORGETTABLE

Linda Larkin  
Frank Brice

# WITTIEST

Charlotte Marlowe  
Frank Brice





MOST REPRESENTATIVE

Mike Pruett  
Nancy Johnson



CUTEST

Steve Denlinger  
Linda Larkin

MOST INTELLECTUAL

Jimmy Moore  
Judy Rose



MOST ATHLETIC

Joe Sullivan  
Jo Ann Sessoms



MOST TALENTED

Nicky Harper  
Patricia Payne

MOST DEPENDABLE

Jim Geiger  
Marie Brinson



## JUNIOR COURT

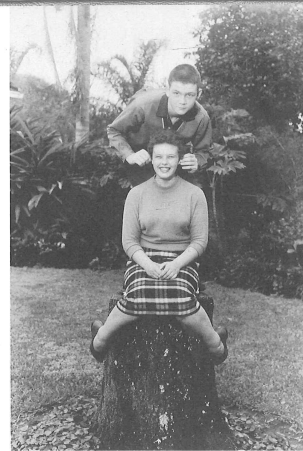


Carolyn Kirkland, Rommie Davis  
Earl McKenzie, Carol Lee Madill



MOST POPULAR

Jim Newland  
Gail Lindsay



WITTIEST

Roberta Pickert  
Wayne Groover

MOST INTELLECTUAL

Sue Colburn  
Tommy Billings





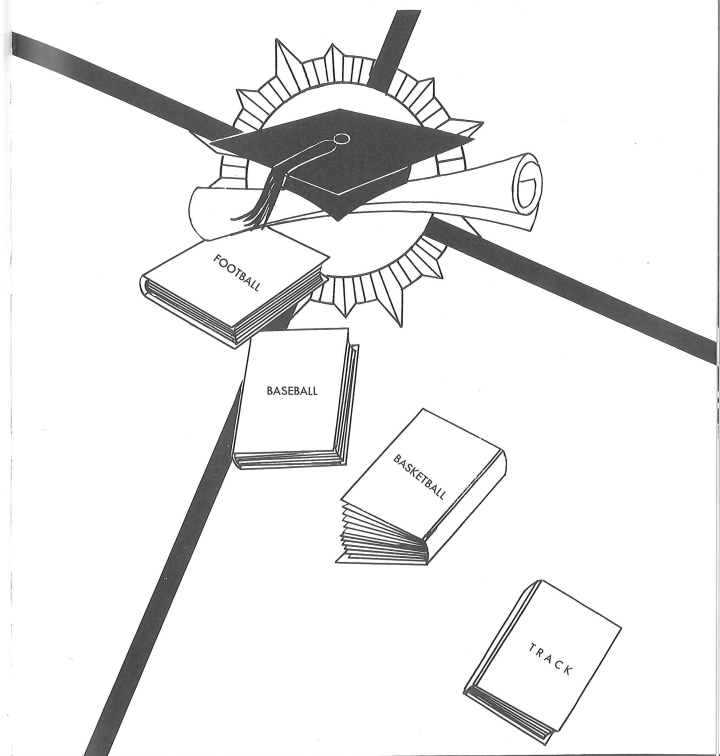
BEST LOOKING  
Carol Lee Madill  
Ronnie Davis



MOST REPRESENTATIVE  
Jim Newland  
Gail Lindsay



MOST ATHLETIC  
Fred Merritt  
Archalene Redfern



# SPORTS

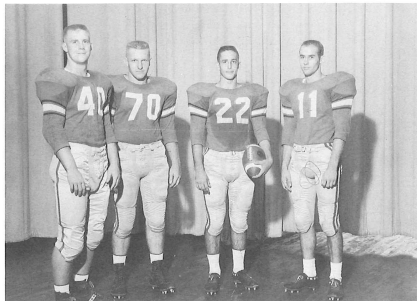


CAPTAINS

VARSITY

FOOTBALL

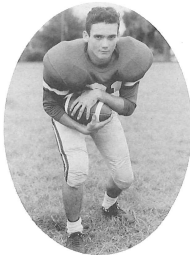
COACHES



Doug Newsome, Alfred Keith, Ronnie Harrell, Joe Sullivan



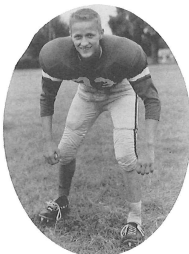
Robert Booth, Jack Hanna, Royce Johnson, Joe Caruso, Head Coach



BILLY FAULK (HB)



RONNIE HARRELL (HB)



BOBBY MORE (HB)



JIMMY HARRIS (C)



FRED WILSON (C)



DALE ANDERTON (QB)



IRWIN MEYER (G)



ALFRED KEITH (T)



JERRY BOYT (G)



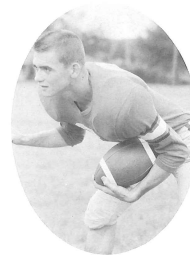
MIKE PRUETT (C)



HERBERT BOLTIN (HB)



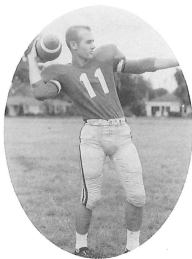
GENE ULLRICH (T)



BOBBY FAULK (HB)



KIRK GIBSON (G)



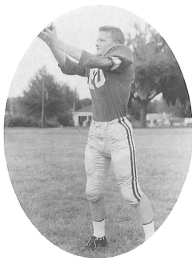
JOE SULLIVAN (QB)



TOMMY OAKLEY (E)



DOUG NEWSOME (FB)



JIM NEWLAND (E)



STEVE DENLINGER (E)



LAMAR DEES (T)

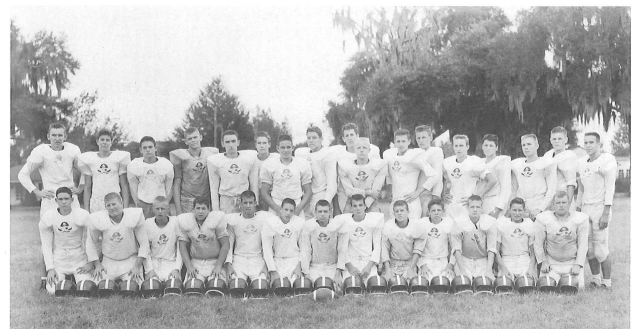


FREDDIE MERRITT (G)

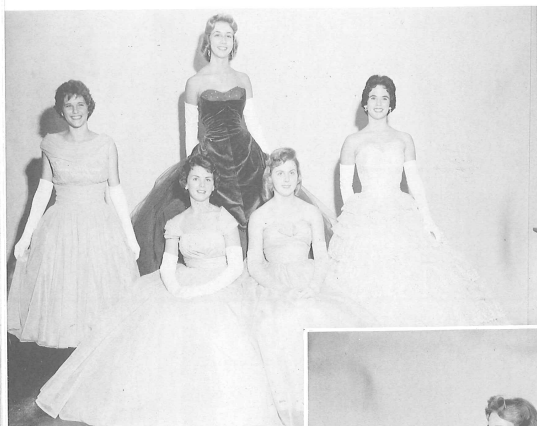


## MANAGERS

Nelson Naber, Billy Estes, Jerry Leavins, Steve Ficquette, Mabry Dixon



## JUNIOR VARSITY TEAM

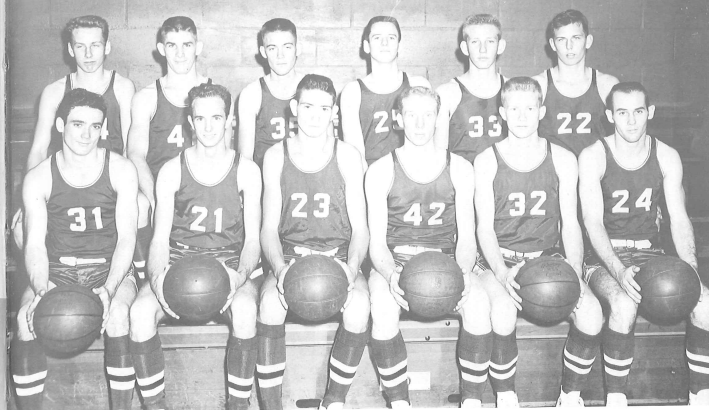


COURT  
Linda Rodgers  
Judy Clark  
Carolyn Kirkland  
Carole France



QUEEN  
Linda Larkin

## HOME COMING



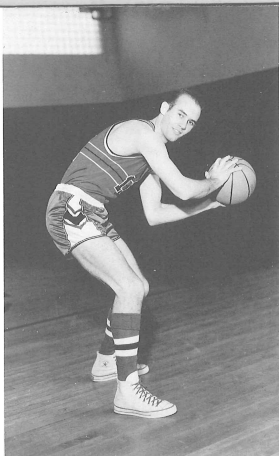
## VARSITY TEAM

COACH JAMES CARR

## SCOREBOARD

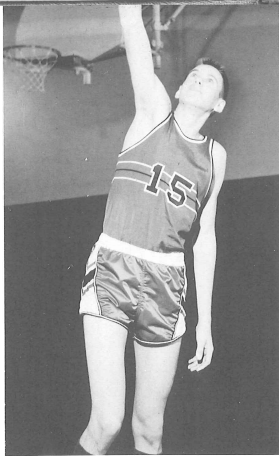
Wins 16 Losses 4

	Home	Opponent		Home	Opponent
St. Leo	50	41	Lake Wales	61	38
Bartow	67	48	Wauchula	44	39
Haines City	61	62	Inverness	52	70
Gulf	66	34	Auburndale	55	45
Zephyrhills	75	43	Plant City	68	35
Auburndale	66	51	Bartow	45	47
Plant City	55	44	Winter Haven	59	43
Inverness	68	38	Lake Wales	54	31
Winter Haven	45	32	Haines City	49	43
Zephyrhills	64	54	Wauchula	38	39



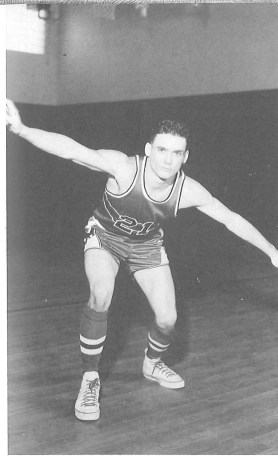
JOE SULLIVAN

LOUIE REEDER



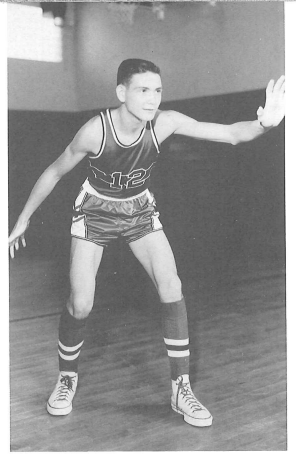
DICK GRAY

MELVIN STANCIL



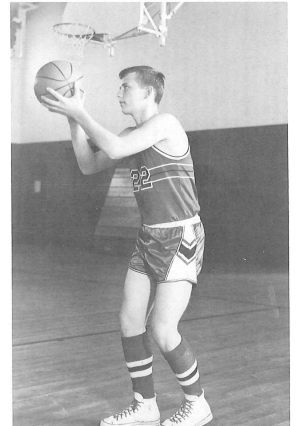
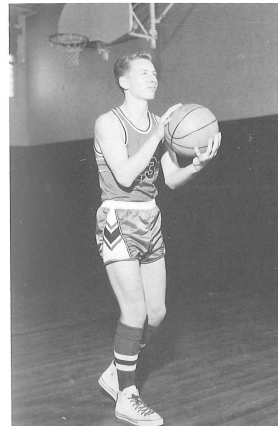
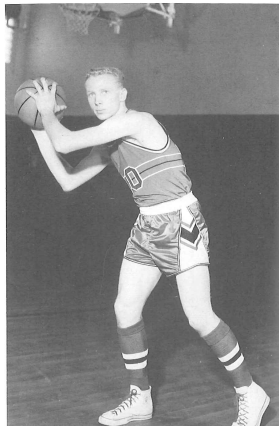
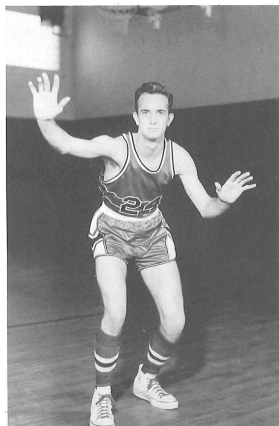
BILLY FAULK

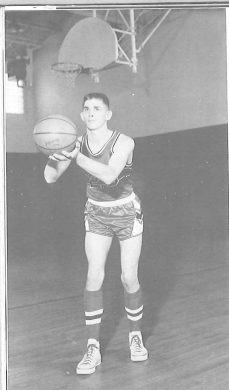
DUKE TYSON



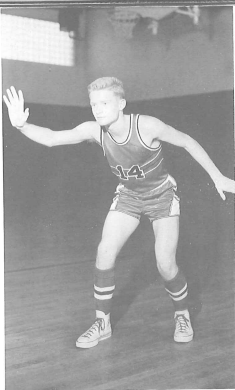
DONALD CRUTCHER

REX LEVOY

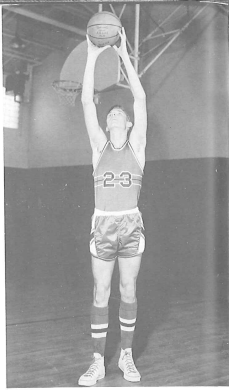




FRED MERRITT



JIM NEWLAND



STAN CROLEY



**JUNIOR VARSITY TEAM**

COACH ROYCE JOHNSON



**FRESHMAN BASKETBALL**

COACH ROBERT HERSHEY



**TRACK**

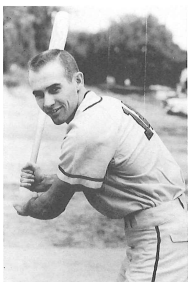
COACH ROBERT BOOTH



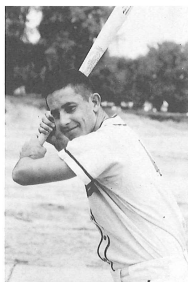
COACH JACK HANNA

## BASEBALL

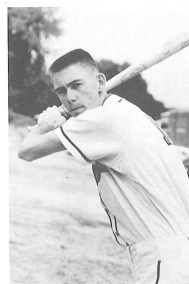
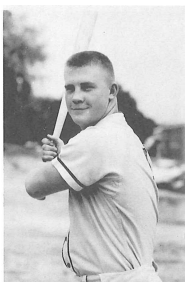
JOE SULLIVAN



RONNIE HARRELL



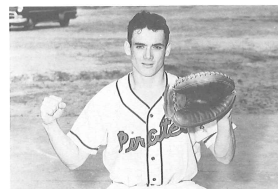
DOUG NEWSOME



GERALD NEWTON

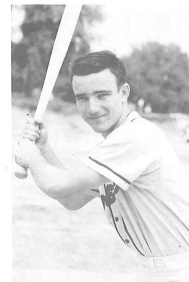


TOMMY OAKLEY

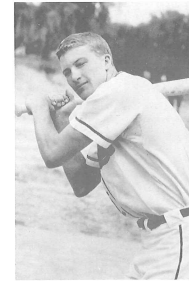


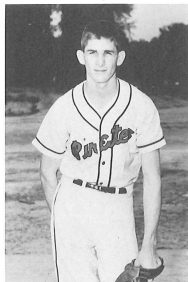
BILLY FAULK

DALE ANDERTON

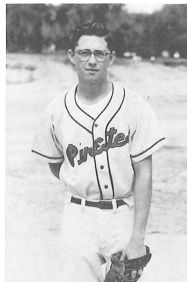


KEN STRAWBRIDGE

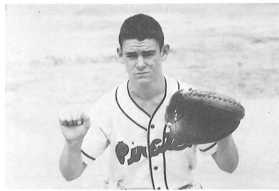




FRED MERRITT

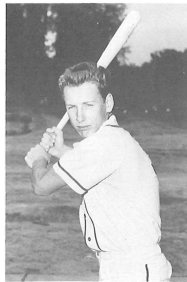
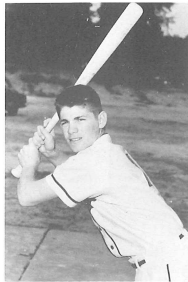


BO ARNEY

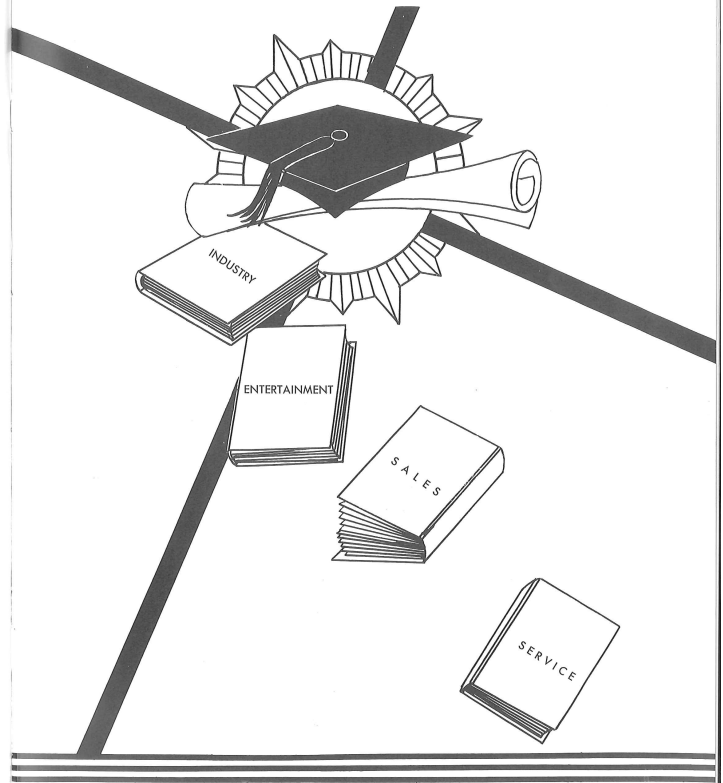


BILLY BACKLINIE

JOHN MERRITT



DUKE TYSON



# ADVERTISING

CONGRATULATIONS  
AND BEST WISHES  
To The

CLASS OF 1960

PASCO PACKING COMPANY

The World's Largest Citrus Processors

OLD SOUTH

FLORIDAGOLD

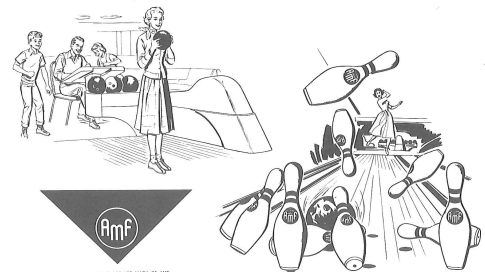
PASCO

Best Wishes  
From

**LOUIE'S BOWLING CENTER**

RECREATION FOR ALL THE FAMILY

Dade City, Florida



TRADEMARK AND SERVICE MARK OF AMF



**WARD'S LAKE IOLA**

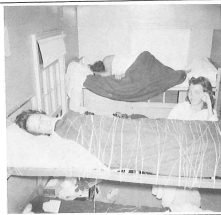
"A beautiful lake resort."  
Modern furnished cottages.  
Swimming...boating...fishing

Dade City Florida



Compliments of  
**DADE CITY HARDWARE**

Evinrude Motors  
General Hardware



GO PIRATES!

PASCO COUNTY'S LEADING NEWSPAPER

306 North 7th Street

Phone LOgan 7-3301

IT'S THE BANNER FOR

. ADVERTISING

. JOB PRINTING

. LOCAL NEWS COVERAGE

Compliments of

**VITA CRAFT, INC.**

Distributors for

Famous Vita Seal System Cooking

Belk-Lindsey Building

P. O. Box 37

Phone LOgan 7-5404  
or 2566

Dade City, Florida

Shop and Save at

**WESTERN AUTO  
ASSOCIATE STORE**

Home Owned and Operated by

H. A. FREEMAN

BEST WISHES

From

**TREIBER HARDWARE, INC.**

Dade City, Florida



BEST WISHES  
SERVING PASCO COUNTY

TIMES  
TEMPERATURES  
TUNES

**W D C F**

1350  
On Your Radio Dial

DADE CITY  
ZEPHYRHILLS  
SAN ANTONIO

Locally Owned & Operated by MR. AND MRS. STUART PICKARD

Compliments of  
**BILL'S SANDWICH SHOP**  
Across the Street From School  
218 South 14th Street  
Dade City, Florida

Beautiful For Home Sites  
& Homes  
SEE

**RIDGE MANOR**  
National Award-winner for  
Community Planning  
Office Open 8 to 5  
Daily including Sunday  
Phone JU 3-2727

BEST WISHES  
**OAKLEY FRUIT COMPANY**  
301 South  
Dade City, Florida



Compliments of

**MAY'S SERVICE SHOP**  
411 East Meridian Avenue  
Dade City, Florida



Compliments of

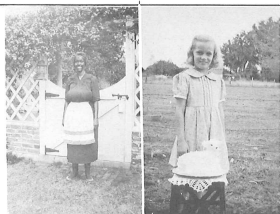
**THE BANK OF PASCO COUNTY**

Established in 1889

Dade City

Florida





Compliments of

### DADE CITY REXALL DRUGS

Expert Cleaning  
All Work Guaranteed  
**Spotless Cleaners & Laundry**

For Pick-up & Delivery  
Phone LOgan 7-5918  
409 North 7th Street  
Dade City, Florida  
Owners - Ray & Margaret Hays

Compliments of

### JOE HERRMANN'S INC. GAS & ELECTRIC APPLIANCES

- \* Air Conditioning
- \* Water Heating
- \* Cooking
- \* Refrigeration
- \* Heating

Compliments of

### KIEFER'S PHARMACY

"Where Pharmacy is an Art  
and a Science"

201 South 7th Street

Dade City

Florida

Compliments of

### BONITA FLOWER SHOP

Complete Flower Service

Dade City

Florida



### JERNIGAN & BROWN USED CARS

Phone LOgan 7-3189  
204 No. 7th Street  
Dade City, Florida

Compliments of

### DADE CITY SPEEDWAY

Dade City

Florida

Compliments of

### FREEZE-ETTE DRIVE-INN

Highway 301 South

Dade City Florida  
Phone: LOgan 7-2804

Glass Mirrors  
Picture Framing  
Plastic Letters and Sheets

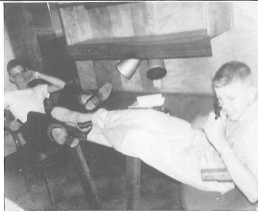
### MELVILLE HALL

415 East Meridian Avenue  
Dade City, Florida  
Telephone LOgan 7-2570



Compliments of

### JOHNSON'S TRACTOR COMPANY



Compliments of

**DADE CITY BICYCLE  
AND SHOE SHOP**

Compliments of

**MYRON NABER'S JEWELRY STORE**

Dade City

Florida

### **STANDARD AUTO PARTS**

MACHINE SHOP PARTS  
CRAWLER TRACTOR PARTS  
INDUSTRIAL SUPPLIES

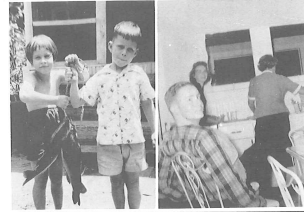
<b>DADE CITY</b>	<b>BROOKSVILLE</b>	<b>ZEPHYRHILLS</b>	<b>CLERMONT</b>
516 N. 7th St.	300 W. Jefferson	615 5th Avenue	7th & DeSoto
Phone	Phone	Phone	Phone
LO 7-5127	2152	SU 2-4398	EX 4-6531

Compliments of

**BELK-LINDSEY COMPANY**

Pasco's  
Largest Department Store

Phone LOgan 7-3970  
301 Meredian Avenue  
Dade City Florida



Compliments of

**RUSSELL'S DRIVE-IN**

CONGRATULATIONS AND BEST WISHES

**CLAY HYDER TRUCKING LINES, INC.**

Compliments of

**SLOUGH GROVE COMPANY, INC.**

Office: Belk-Lindsey Building

Dade City

Florida

Compliments of  
**McCLUNG'S**  
Pasco County's  
Newest and Most Modern  
Variety Store  
Dade City Florida

**DOVIE'S**  
Ladies Apparel  
Nationally Advertised Brands  
Jr. Miss and Half-Sizes  
Exclusive But Not Expensive  
207 S. 7th Street  
Phone LOfan 7-3798

Williams

Dade City's Fashion Center  
NATIONALLY ADVERTISED BRANDS FOR ALL THE FAMILY  
Dade City Florida

Compliments of and Best Wishes

**FLORIDA TELEPHONE CORPORATION**

Compliments of  
**FRED HALE**



Compliments of  
**Coleman Insurance Agency**  
ALL KINDS OF INSURANCE

207 North 7th Street  
Dade City, Florida  
Phone LOfan 3871

Compliments of

**MR. AND MRS. R. DUANE ANDERSON**

Dade City

Florida

Your One-Stop Food Store  
**I & L FARMER'S  
FEED AND SUPPLY**

Feeds... Seeds... Fertilizer.  
Bee Supplies

**ALLEN'S OUTBOARD  
MARINE**

509 West 7th Street  
Dade City, Florida

Compliments of  
**FLORIDA OFFICE SUPPLY**  
Complete line of office supplies  
and equipment  
Dade City Florida

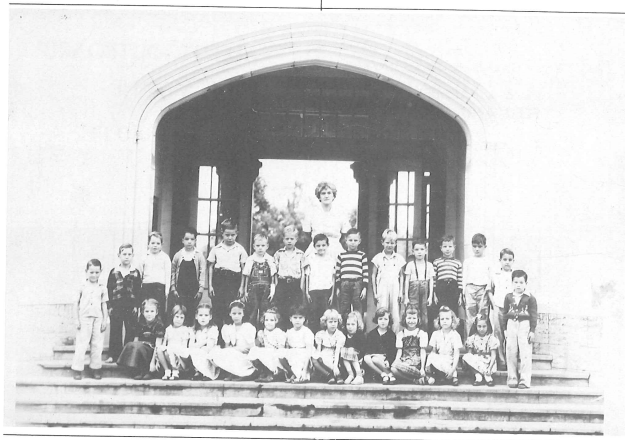




Compliments of  
**OUTLET DEPARTMENT STORE**

Compliments of  
**NATIONAL GUARD ARMORY**  
Company A, 2nd Battle Group  
211 Infantry

**PASCO SHOPPER**  
The best medium of  
advertising in  
Pasco County  
209 N. 7th Street  
Phone LOgan 7-3370  
Dade City, Florida



Compliments of  
**BUD'S AUTO ELECTRIC**  
Dade City, Florida

Compliments of  
J. Roger Davis  
**WILLIAMS INSURANCE  
AGENCY, INC.**

Compliments of  
**CARTER'S JEWELERS**  
THE FRIENDLY STORE  
Dade City, Florida

Compliments of  
**COCA - COLA**  
Dade City, Florida

Compliments of  
**RAINBOW FOUNTAIN MOTEL**  
21 Years  
Completely  
Air Conditioned

Compliments of  
**DANIEL  
FURNITURE COMPANY**  
Dade City Florida



BEST WISHES  
**ROSE ELECTRIC COMPANY**

SERVING  
FARM, HOME AND INDUSTRY

301 Highway South  
Dade City, Florida  
Phone LOgan 7-3615



**E. & M. RESTAURANT**

"WE SERVE TO SERVE AGAIN"

Dade City,

AIR CONDITIONED

Florida

431 North 7th Street

CONGRATULATIONS AND BEST WISHES

**WATKIN'S MOTOR LINES, INC.**

Compliments of  
**CURRINGTON'S  
BARBER SHOP**

Dade City, Florida



Compliments of

**THE FLORI-SUN MOTEL**

A. J. LUTZ  
Land O'Lakes, Florida

Compliments of

**WALTER'S BARBER SHOP**

Dade City, Florida

Compliments of

**HARDY'S DEPARTMENT STORE**

Dade City

Florida

AND AS  
THE  
DAY DRAWS TO  
A CLOSE . . .

