



THE
PIRATE
1 9 5 7

Printed by
J. J. JONES
NEW YORK, N. Y.

THE PIRATE



Presented by

**THE SENIOR CLASS
PASCO HIGH SCHOOL**

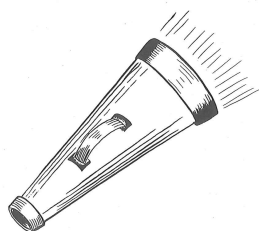
Dade City, Florida



TABLE OF CONTENTS



DEDICATION	3
FACULTY	4
SENIORS	9
JUNIORS	33
SOPHOMORES	43
FRESHMEN	53
LAURELS	61
ACTIVITIES	71
SPORTS	85
ADVERTISEMENTS	99

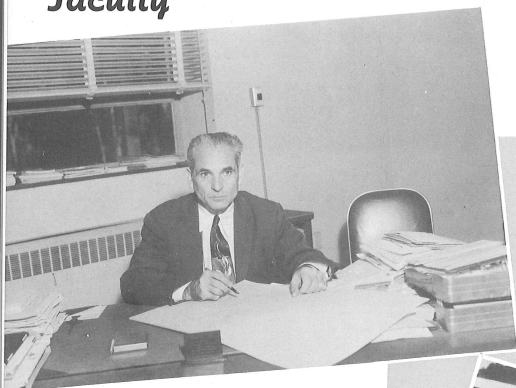


DEDICATION



This annual is dedicated to one member of our faculty in recognition of her many efforts in our behalf and her interest in us as individuals. Because of the generous amount of help she has given us, and because of our love and respect for her, we, the graduating class of 1957, dedicate this annual to our class sponsor, Mrs. Bertha McKillips.

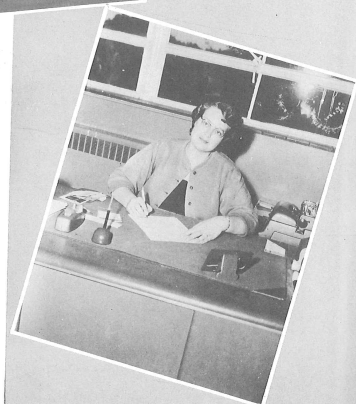
Faculty



O. S. BANDY, Principal



CONNEL RODGERS
Guidance Director



RUTH PHILMON
Secretary

Mr. Frank Blocker
Miss Lillian Martin
Mrs. Ann Henderson
Mr. Albert Smith



Mrs. Wilma Peden
Mr. Gary Jordan
Mrs. Bertha McKillips
Mr. Jack Dudley





Mr. Robert Batson, Mr. Robert Booth, Miss Ruth Lewis, Mr. James Pannell.

Mr. William Sullivan, Mr. Arleis Ross, Mrs. Mary Weyher, Mr. William Fingerhut.



Mr. Chester Taylor, Mr. Robert Kitzmiller, Mrs. Frances Brown, Mrs. Mildred Byrd.



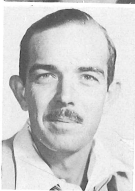
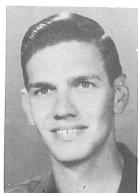
Mr. David Congelton, Miss Doris Tant, Miss Elizabeth Hale.



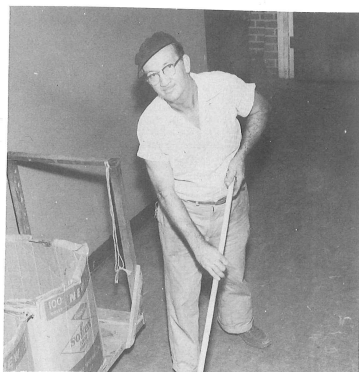
SENIORS



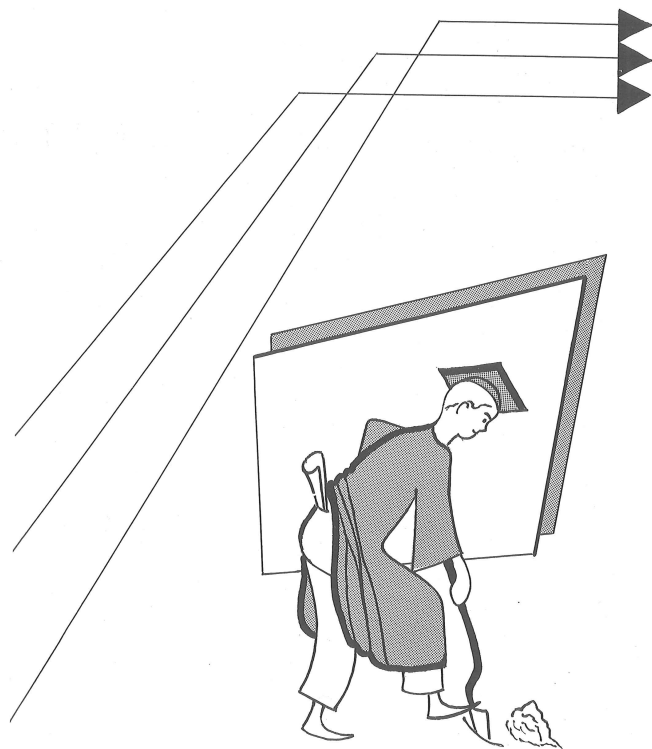
MR. JOE CARUSO
MISS BETTY GRIFFIN



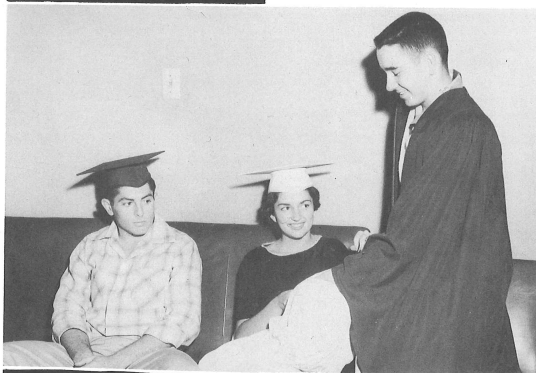
MR. FLOYD PHILMON
MR. ELMO COLLINS



MR. W. R. FLOYD



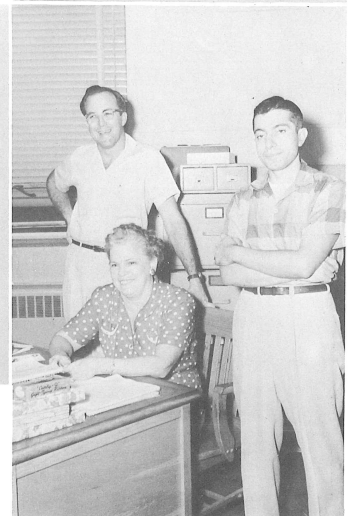
SENIOR CLASS OFFICERS



TREASURER Booty Valentine
SECRETARY Mary Ann Waldroff
PRESIDENT Van Pittman
VICE-PRESIDENT (Not Shown) Bennett Moore

Sponsors

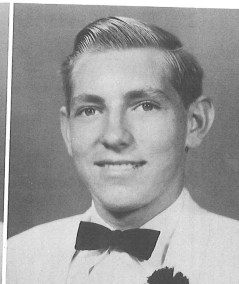
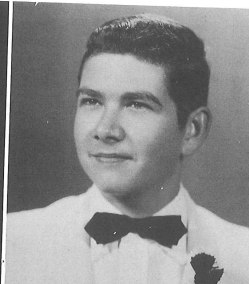
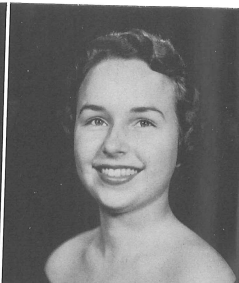
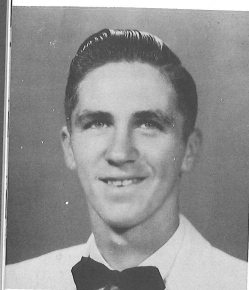
MR, CHESTER TAYLOR
MRS, BERTHA McKILLIPS
MR, GARY JORDAN



BOBBY ABNEY... Lettermen's Club 3, 4.

PEGGY AUTON... F. H. A. 4, Spanish Club 2, Band 2, 3, 4, Bible Appreciation Club 2, 3, Paper Staff 4, Glee Club 4, Debate Club 3, Music Appreciation Club 4.

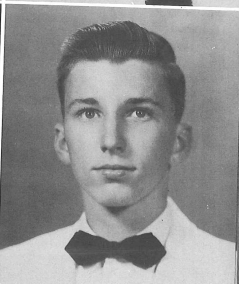
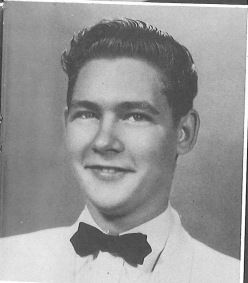
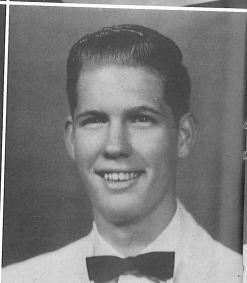
GLORIA BALDWIN... Pep Club 1, 2, 3, 4, Beta Club 2, 3, 4, Band 1, 2, 3, Homeroom Officer 1, 2, Student Council Representative 1, 2, 3, 4, Lionettes 4, Pirate Log 3, Class Secretary 1, 3, Pep Club 3, 4, Notable 3, Bible Appreciation Club 2, 3, 4, Homecoming Court 3, 4.



LIBBY BOYETTE... Bible Appreciation Club 1, 2, 3, 4, Music Appreciation Club 3, 4, Homeroom Officer 3, Glee Club 2, 3, 4, Operetta 2, 3, 4.

MERLE BOYETT... Band 1, F. F. A. 1, 2, 3, D. C. T. 4.

ALTON BOYT



SHIRLEY BETTIS... Beta Club 3, 4, F. H. A. 3, 4, Annual Staff 4.

AGNES BLOMMEL... Basketball 3, F. H. A. 1, D. C. T. 4, 4-H 1.

CHARLES BOLTON... Beta Club 2, 3, 4, Pep Club 1, 2, 3, President 4, Student Council Vice President 3, President 4, Class President 1, 2, Homeroom President 1, 2, Key Club 2, Officer 3, 4, Football 3, 4, Baseball 1, 2, 3, 4, Basketball 2, 3, 4, Operetta 3, 4, Lettermen's Club 3, 4, Notable 3.

VIRGIL BRATCHER

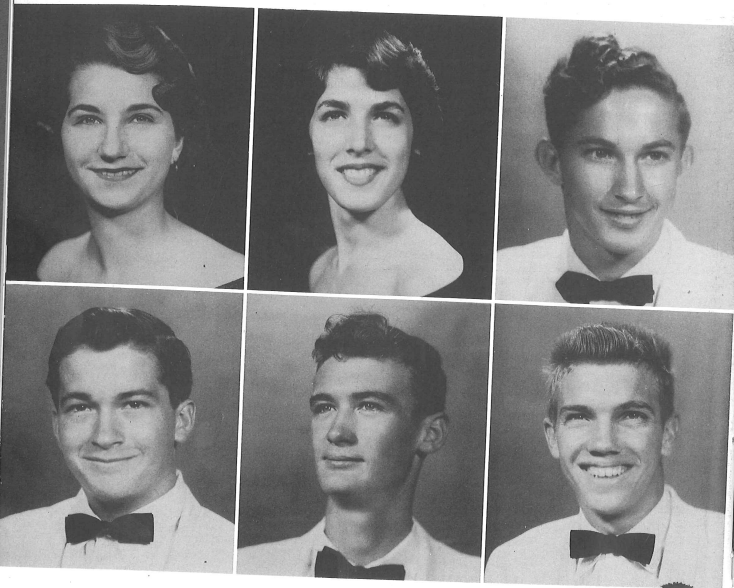
BETTIE BRICE... Pep Club 2, 4, Cheerleader 4, Lionettes President 4, Student Council 2, Homeroom Officer 1, F. T. A. 2, 4, Bible Appreciation Club 1, 2, 4, Operetta 1, Homecoming Court 1.

JOHN BRINSON... Football 1, 2, 3, 4, Baseball 2, 3, 4, Key Club 3, 4, Lettermen's Club 2, Spanish Club 2, Homeroom Vice-President 2, Student Council Alternate 3.

BARBARA BROWN...Bible Appreciation Club 1, 2, 3, Spanish Club 1, F. T. A. 1, 2, 3, 4, Band 2, 3, 4, Debate Club 3, 4.

PATSY BROWN...Glee Club 2, 3, 4, Spanish Club 2, F. H. A. 4, F. T. A. 4, Student Council Alternate 2, Music Appreciation Club 3, 4, Debate Club 3, Operetta 2, 3, 4, Bible Appreciation Club 2, 3, 4.

E. J. BRYANT...Homeroom Secretary-Treasurer 4, F. F. A. 1, 2, Shop 3, 4.



ROBERT BRYANT...F. F. A. 1, 2, 3, 4.

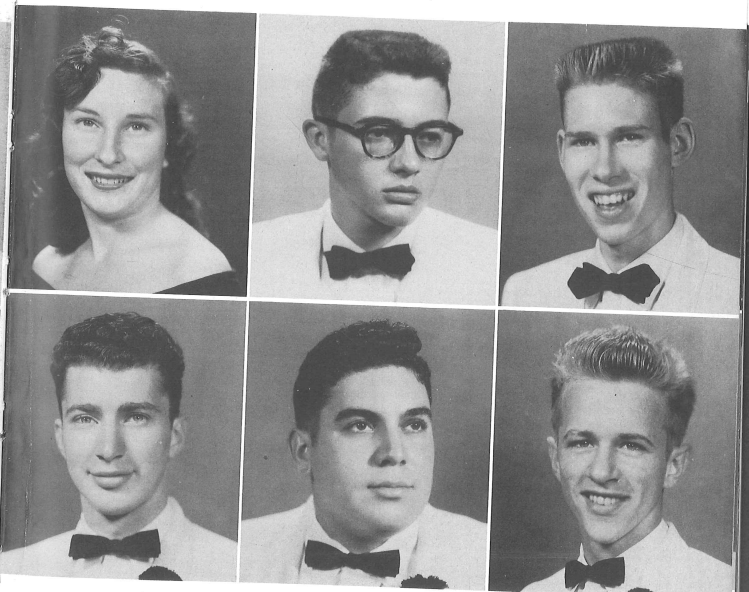
TOMMY BUSH

JACK CANNON

BETTY JO CARPENTER...4-H Club 1, 2, Bible Appreciation Club 2, 3, 4.

BUDDY CASH...Band 1, 2, 3, 4, Glee Club 4, Bible Appreciation Club 4, Audio Visual Club 1, 2, 3, 4.

IVAN CLANTON...Beta Club 2, 3, 4, Student Council 2, Homeroom President 3, Spanish Club 3, Radio Club Secretary-Treasurer 4, Banquet Waiter 2.



MILFORD CLARK...Football 1, 2, Track 2, Glee Club 4, F. F. A. 1, 2, Bible Appreciation 1, 2, 3, Operetta 3, Basketball 1, 4-H 1.

LOUIS COLLURA...F. F. A. 1, 2, Secretary 3, President 4, Band 1, 2, 3, 4, 4-H Club 1, 2, 3, 4, Homeroom Vice President 3, Football 4.

RAINEY COUNCIL...F. F. A. 1, 2, Student Council 1, 2, 3, 4, Class Vice-President 1, 2, Glee Club 4, Music Appreciation Club President 4, Operetta 3, Bible Appreciation Club 3, 4.

DOROTHY COWAN... Transferred from Audubon High School, Los Angeles, California 2.

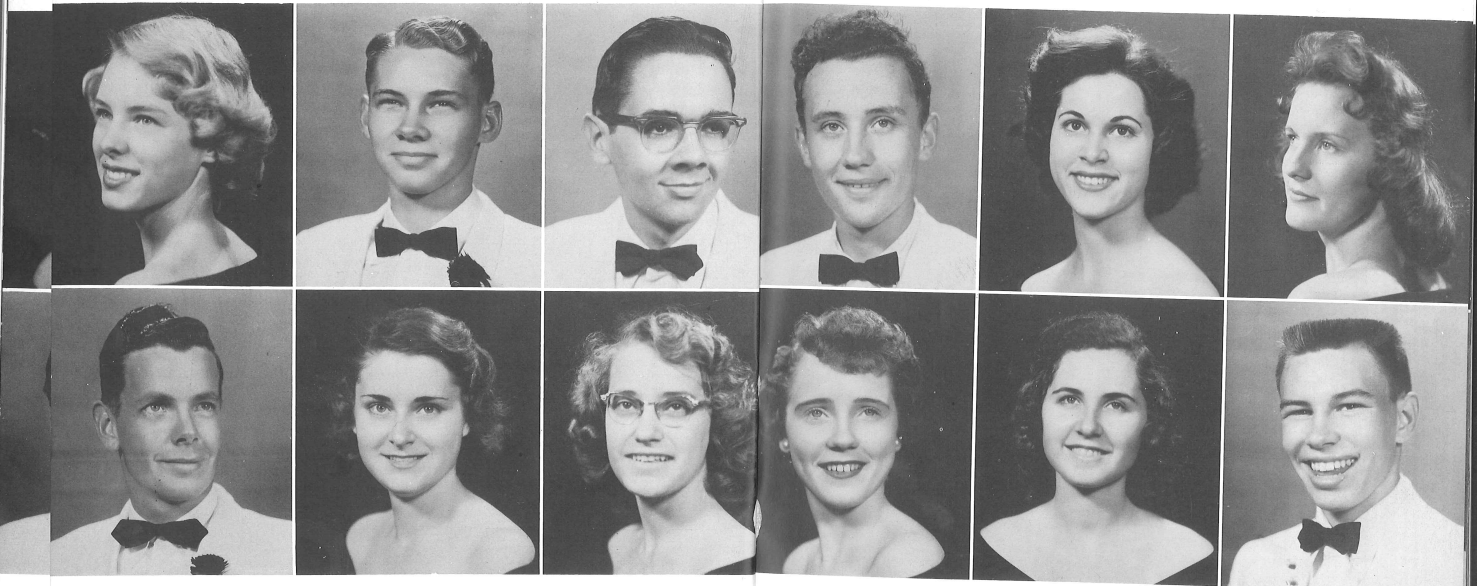
DARWIN CROFT... F.F.A. 1, 2, 3, 4, Band 1, 2, 3, 4, 4-H 1, 2, Glee Club 4.

JOHN DENNIS... Band 1, 3, 4, Basketball 1, 3, 4, Debate Club 3, Vice-President 4, Chess Club President 3, 4, Junior Lions Club President 3, 4, F.T.A. 3, 4, Lettermen's Club 4, Science Club 4, Bible Appreciation Club 1, 3, 4, 4-H 1, 3, Glee Club 4, Operetta 3, 4, Music Appreciation Club 4, Paper Staff 4, Radio Club 4.

BILL DUTCHER... F.F.A. 1, 2, Band 3, 4.

PATSY DYESS... Homeroom Officer 1, 2, 3, F.H.A. 3, F.T.A. 3, 4, Bible Appreciation Club 3, Pep Club 3, 4, Operetta 4, Music Appreciation Club 4, Glee Club 4.

LUGENE ETHERIDGE... Bible Appreciation Club 1, 2, 3, 4, Glee Club 3, 4, Operetta 3, 4, Basketball 1.



MARION DEWEY... F.F.A. 1, 2, 3, 4.

MARION DITTER... Beta Club 2, 3, 4, Spanish Club 2, F.T.A. 2, 3, Vice-President 4, D.C.T. 4, Bible Appreciation Club 1, 2, 3, 4.

FRANCES DURDEN... Beta Club 2, 3, 4, Bible Appreciation Club 1, 2, 3, 4, Music Appreciation Club 3, 4, Glee Club 3, 4, Operetta 3, 4, Homeroom Officer 1, Spanish Club 2.

ANNETTE FALLIN... D.C.T. 4, Spanish Club 2, Bible Appreciation Club 2, 4.

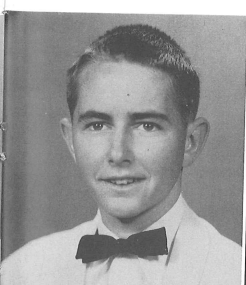
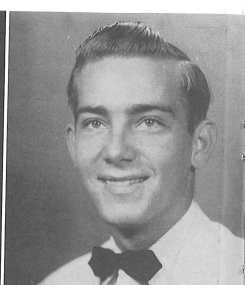
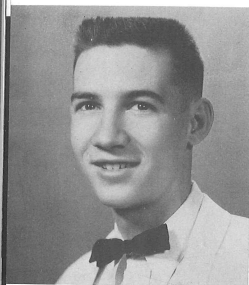
MARY FRANCES FARMER... Beta Club 2, 3, 4, F.T.A. 2, 3, 4, F.H.A. 3, 4, Music Appreciation Club 3, 4, Student Council 4, Homeroom President 2, Glee Club 3, 4, Bible Appreciation Club 1, 2, 3, 4, Operetta 3, 4.

LARRY FLANNERY... Transferred from Hazard High School, Hazard, Ky., Track 1, Basketball 3, 4, Chess Club 3, 4, Homeroom Vice-President 4.

HARRY FLOYD... D. C. T. 3, 4, F. F. A. 1.

LOIS GALSTER... D. C. T. Historian 4, Beta Club 2, 3, 4, Student Council 1, Glee Club 2, 3, Bible Appreciation Club 1, 2, 3, 4, F. T. A. 3, Historian 4, Chaplain 3, Operetta 2, 3, Music Appreciation Club 3.

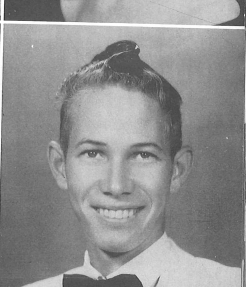
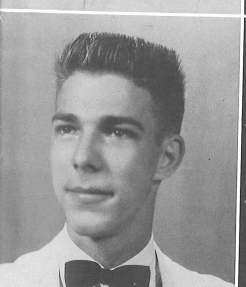
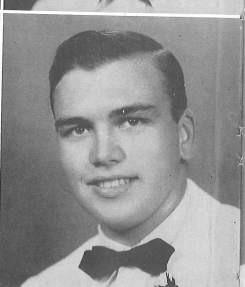
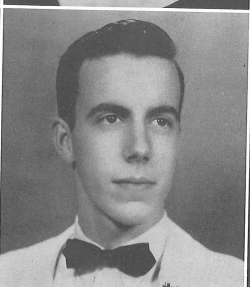
JAMES GANT... Transferred from St. Leo Prep School, San Antonio, Fla. 2, D. C. T. 4.



RAY GRIFFIN... Transferred from Moultrie High School, Moultrie, Ga. 4, D. C. T. Club 4.

EMILEE GROSSENBACHER... Transferred from Hillsborough High, Tampa, Fla. 4, F. H. A. 4, Paper Staff 4.

ALICE GUDE... 4-H Club President 1, 2, 3, 4, Band 2, 3, 4.



JOHNNIE MAE GASKIN... D. C. T. 4, 4-H Club 1.

DAVID GIBSON

MELTON GODWIN... Football 1, 2, 3, 4, Baseball 1, Band 2, 3, 4, Lettermen's Club 3, 4, Glee Club 4, 4-H 1, 2, Radio Club 1, Annual Staff 4, Music Appreciation Club 3, 4, G. O. C. 2, 3, Operetta 4, F. F. A. 1.

ANTHONY GUDE... D. C. T. Club 4.

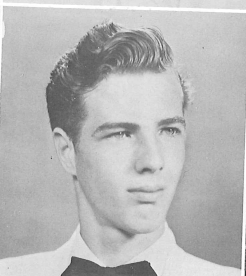
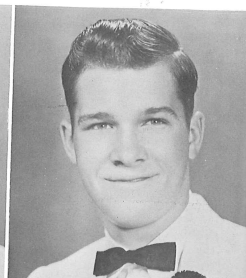
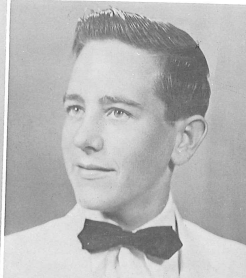
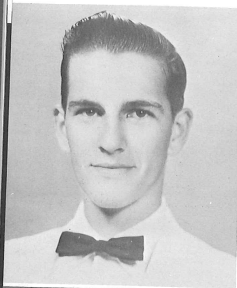
HELEN GUREY... Homeroom President 1, Secretary 2, Pep Club 2, 3, 4, Music Appreciation Club 2, 3, Band 1, 2, 3, Bible Appreciation Club 1, 2, Paper Staff 3, Beta Club 2, 3, 4, Office Training Club 4, Lionettes 4.

JAMES HARRIS... F. F. A. 1, 2, 3.

RAY HARRIS...F.F.A. 1, 2, 3, 4.

JIMMY HEABERLIN... Transferred from St. Cloud 3, F.F.A. 3, D.C.T. 4.

ROBERT HENLEY... Lettermen's Club 3, 4, Football 3, 4, Glee Club 4, Music Appreciation Club 4, Baseball 4, Track 4, Paper Staff 4.



EVA HEUFEL... Pep Club 1, 2, 3, 4, Bible Appreciation Club 1, 2, 3, Banquet Waitress 3, Student Council 2, Homeroom President 1, 2, F.H.A. 1, 2, 3, 4, Majorette 3, 4, Annual Staff 4.

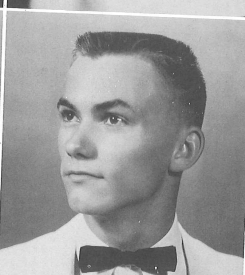
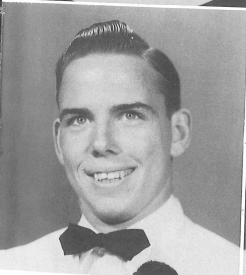
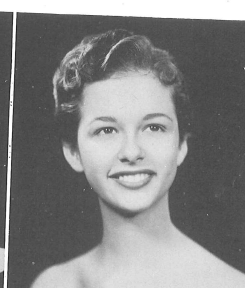
DENNIS HEURING... Transferred from Central High School, Charlotte, N.C. 3, Tennis Team 4, Basketball 4, Debate Club 3, 4, Chess Club 3, 4, Radio Club 4, Paper Staff 3, 4, Science Club 4.

RUTH HILLARD... Glee Club 2, Spanish Club 3, D.C.T. Treasurer 4.

SARA HOWARD...F.H.A. 1, 2, 3, 4, Beta Club 3, 4.

MARTHA JACKSON...F.T.A. 2, 3, 4, Homeroom President 3, Pep Club 1, 2, 4, Vice-President 3, Music Club 4, Vice-President 3, Majorette 1, 2, Lionettes 3, 4, Operetta 2, 3, 4, Banquet Waitress 2, Girl's State 3, Bible Appreciation Club 2, 3.

NINA JERNIGAN...F.T.A. 2, 3, 4, Homeroom President 1, Pep Club 1, 2, 3, 4, Music Appreciation Club 3, Beta Club 2, 4, Secretary 3, Lionettes 4, Student Council 3, 4, Bible Appreciation Club 2, 3, Operetta 1, 2, 4, Banquet Waitress 2.



JEFF JETER...F.F.A. 1, 2, 3, 4, Student Council 1, 2, 3, Homeroom President 4, Baseball 1, 2, 3, 4, Football 1, 2, 3, 4, Banquet Waiter 2, Bible Appreciation Club 1, 2, 4, Lettermen's Club 2, 3, 4.

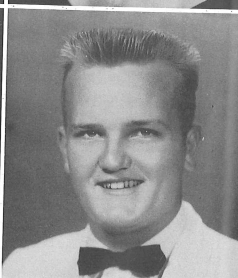
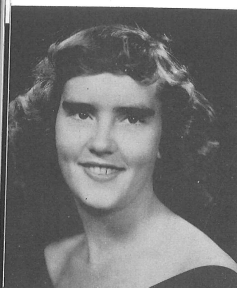
CHARLES JOHNSON... Homeroom Secretary 1, President 4, F.F.A. 2, D.C.T. 3, President 4, Student Council 4.

BETTY JEAN JONES... Debate Club 3, F.H.A. 3, Program Chairman 4, Bible Appreciation Club 1, 2, 3, President 4, Spanish 2, 3, Annual Staff 4, F.T.A. 2, 3, 4, Homeroom Secretary-Treasurer 4.

VIRGINIA JONES... Glee Club 4, Bible Appreciation Club 1, 2, 3, 4, Music Appreciation Club 4, Operetta 4.

MARGARET JOYNER... Bible Appreciation Club 3, 4, Music Appreciation Club 4, Glee Club 4, Operetta 4, Spanish Club 1.

TILLIE KIDD... Transferred from Scott High School, Toledo, Ohio 2, F. H. A. 1.



VERA KOZAKOFF... Spanish Club 2, F. H. A. 4, F. T. A. 4, Beta Club 3, 4, Homeroom Secretary 3, Debate Club 3, Bible Appreciation Club 2, 3, 4, Music Appreciation Club 4, G. O. C. 3.

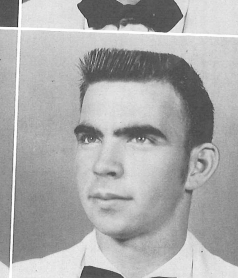
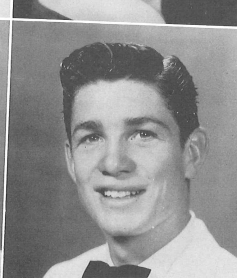
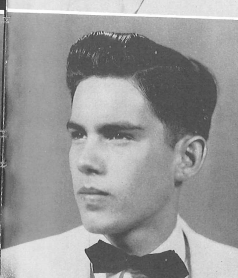
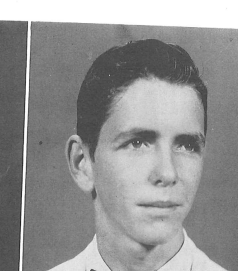
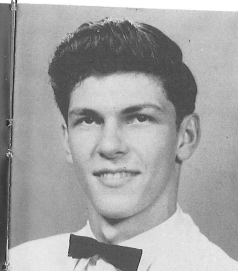
PHYLLIS LAROCHE... Transferred from Dominican Academy, Fall River, Mass. 2, Journalism 3, D. C. T. Club 4, Bible Appreciation Club 4.

TOMMY LAW... Football 1, 2, 3, 4, Homeroom Vice-President 4, Lettermen's Club 3, 4, Glee Club 4, Operetta 4, F. T. A. 3, 4.

BENNIE LEASURE... Beta Club 2, Glee Club 2.

JUDITH LINDSAY... Band 1, 2, 3, 4, Annual Staff 3, Editor 4, F. H. A. 1, 4, President 2, 3, Pep Club 2, Treasurer 3, 4, Student Council Secretary 3, Bible Appreciation Club 2, 3, Homecoming Maid 2, Queen 4, G. O. C. 2, Basketball 1, 2, Banquet Waitress 2, Notable 3.

HUBERT MANN



WAYNE MERCER... F. F. A. 1, 2, 3.

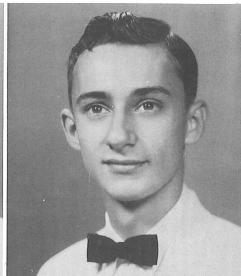
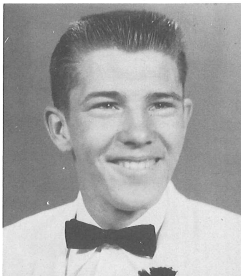
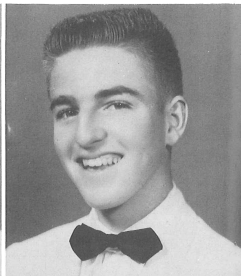
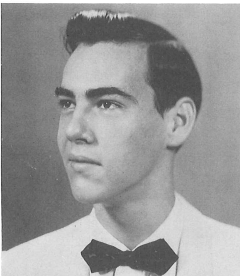
EDDIE MERRITT... Transferred from Screven High School, Screven, Georgia 3.

JAMES MEYER... F. F. A. 1.

AARON MITCHELL... Baseball 1, 2, 3, 4, Football 1, 2, 3, 4, Spanish Club 1, Bible Appreciation Club 4, Lettermen's Club 3, 4, F.F.A. 1, Homeroom Vice-President 1, 2.

ALBERT MITCHELL... F.F.A. 1, Spanish Club 2, Music Appreciation Club 4, Glee Club 4, Operetta 4.

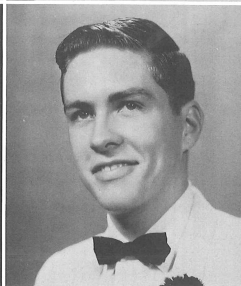
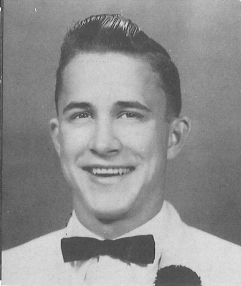
BILLY MOOREHEAD... Band 2, 3, 4, Key Club 2, 3, 4.



NANCY MURPHY... 4-H Club 1, 2.

TOMMY NEELY... Football 3, 4, Basketball 2, 3, 4, Lettermen's Club 3, 4, Bible Appreciation Club 3, 4, Baseball 4, Junior Lions Club 3, 4, Projector's Club 4.

NELSON NICHOLS... Football 2, 3, Basketball 2, Bible Appreciation Club 1, 2, 3, 4, Radio Club President 4, Lettermen's Club 3, 4.



BENNETT MORE... Pep Club 3, 4, Lettermen's Club 2, 3, 4, Key Club 4, Football 1, 2, 3, 4, Baseball 1, 4, Basketball 1, 2, 3, 4, Vice-President Senior Class 4, Student Council 2, 4, Track 1, 2, 3, 4, Operetta 3, 4, Glee Club 4, Notable 3, F.T.A. 3, 4, F.F.A. 1, Bible Appreciation Club 2, 3, 4.

LORETTA MOSES... F.H.A. 3, D.C.T. Club Secretary 4, Spanish Club 2, Homeroom Secretary 4, Bible Appreciation Club 2, 3, 4.

CAROL JEAN MULLER... Transferred from Kaiserslautern, Germany 3, Glee Club 3, 4, F.H.A. 3, 4, F.T.A. 3, 4, 4-H Club 3, Office Training Club 4, Music Appreciation 3, Operetta 3, 4, Bible Appreciation Club 3, 4.

ROSE MARIE NIKOLAI... Band 1, 2, 3, 4, Glee Club 2, 3, 4, Beta Club 2, 3, 4, F.T.A. 2, 3, 4, F.H.A. 4, Operetta 2, 3, 4, Music Appreciation Club 1, 2, 3, 4, Office Training Club 4, Student Council 1, 2, Annual Staff 4.

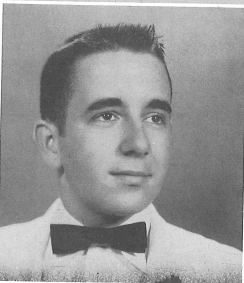
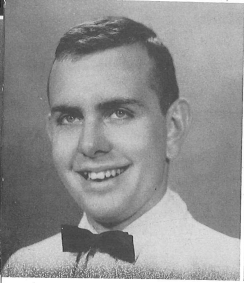
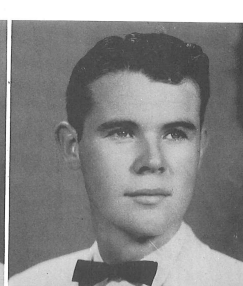
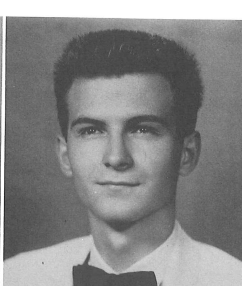
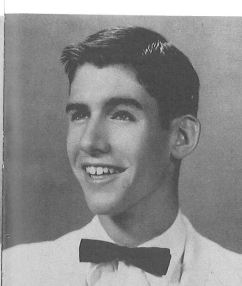
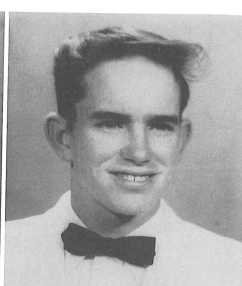
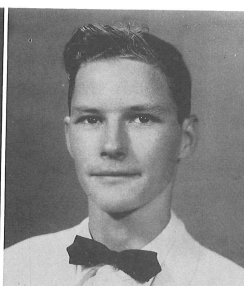
SALLY NORTHRUP... Pirate Log Staff Feature Editor 1, Editor 2, Editor Advisor 3, Associate Advisor 4, Quill and Scroll 3, 4, Bible Appreciation Club 1, 2, 3, 4, Homeroom Treasurer 2, Vice-President 3, Secretary-Treasurer 4, Debate 3, 4, Music Appreciation Club 3, 4, Library Assistant 4, Office Assistant 4.

DENNIS NUTT... Football 1, 2, 3, Basketball 1, 2, 3, 4, Bible Appreciation Club 2, 3, 4, Radio Club 1, 4, Lettermen's Club 3, 4, Key Club 3, 4, Student Council 1.

TOMMIE PARKER... Bible Appreciation Club 2, 3.

ELDRIDGE PARRISH... Pirate Log 1, Bible Appreciation Club 1.

MALLOY PEARSON



RONALD PICARD... Transferred from Lakeland, Fla. 4, Basketball 4.

VAN PITTMAN... Key Club 2, 3, President 4, Class President 4, Homeroom President 2, 3, 4, Pep Club 3, 4, Student Council 1, Secretary-Treasurer 2, Band 1, 2, 3, G. O. C. 3, 4, Banquet Waiter 2, Junior Notable 3, Music Appreciation Club 1, 2, 4, Operetta 3, 4, Bible Appreciation Club 3, 4, Office Assistant 2, 3, 4, Glee Club 4, Radio Club 3, 4.

JIMMY PITTS... Band 1, 2, 3, 4, Music Appreciation Club 4, Glee Club 4, Homeroom Secretary 1, Operetta 3, 4.

26

DON PORTER... Key Club 3, Secretary 4, Beta Club 2, 3, Vice-President 4, Baseball 1, 2, 3, 4, Basketball 2, 3, 4, Track 3, 4, Radio Club 1, 2, Banquet Waiter 2, F. F. A. 1.

JAMES RACKLEY... Transferred from Quitman High School, Quitman Georgia 2, Basketball 4.

GENE RAMSEY... Bible Appreciation Club 1, 2, 3, 4, Music Appreciation Club 3, 4, Band 2, 3, 4, Lions Club 3, 4.

FREDDIE RICE... Basketball 2, 3, 4, Baseball 4, Track 4.

CAROLYN ROGERS... Spanish 1, Glee Club 1, 2, 3, 4, Operetta 1, 2, 3, 4, Bible Appreciation Club 1.

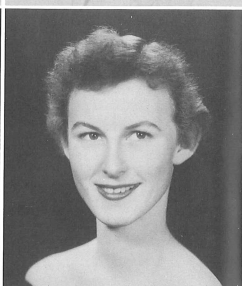
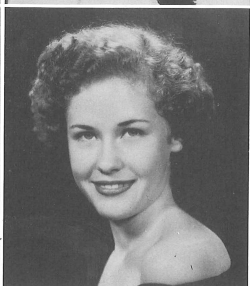
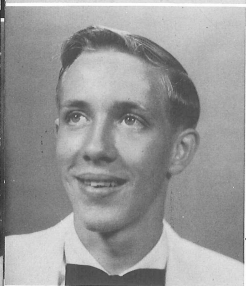
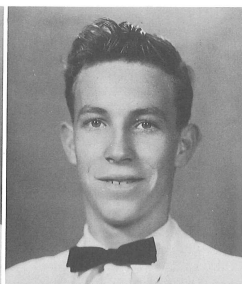
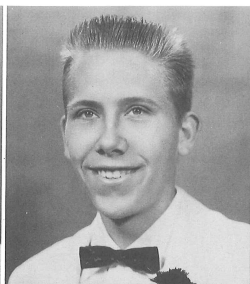
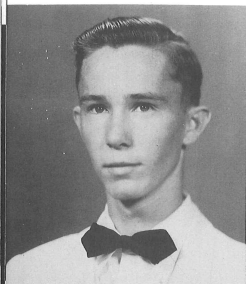
GINGER RUSSELL... Operetta 2, 3, 4, Bible Appreciation Club 1, 2, 3, 4, Homeroom Secretary 2, Music Appreciation Club 3, 4, Glee Club 1, 2, 3, 4, Homeroom Chaplain 3.

27

W. E. RUTHERFORD... Spanish Club 3, F. F. A. 1.

JERAL RYALS... Transferred from Hillsborough High School, Tampa, Fla. 4, F. F. A. 4.

CHARLES SCOGGINS... Spanish Club 1.



PHILIP SHETTLE... Band 2, Captain 3, 4, Key Club 4, F. F. A. 2, 4-H 1, 2, Glee Club 4, Bible Appreciation Club 2, 3, 4, Operetta 4, Music Appreciation Club, Vice-President 4.

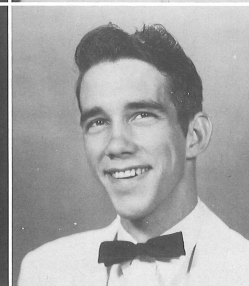
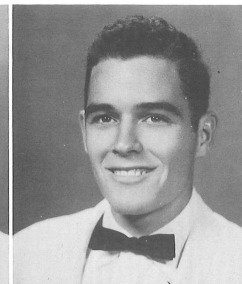
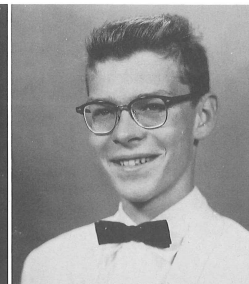
LOLA SIMLER... Pirate Log Staff 3, Editor 4, Beta Club 3, 4, Homeroom Secretary 3, Music Appreciation Club 3.

DORA SINGLETARY... Beta Club 3, 4, D. C. T. Club 4, Bible Appreciation Club 1, 2, 3, 4, Basketball 1, Spanish Club 2, Pep Club 4.

JOAN SLATER... Beta Club 2, 3, 4, Homeroom Secretary 2, Student Council 1, 4, Bible Appreciation Club 2, 3, 4, D. C. T. Reporter 4, Chaplain 4.

ARTHUR STAEBEN

VIRGIL STARLING... Lettermen's Club 3, 4, Key Club 4, Homeroom Vice-President 3, President 4, Football 1, 2, 3, 4, Basketball 2, 3, 4, Baseball 1, 2, 3, 4, Track 3, 4, Pep Club 4, Bible Appreciation Club 2, 3, 4.



ANNIE PEARL STEWART... F. H. A. 1, 2, 3, 4-H Club 1, 2, 3, Bible Appreciation 1, 2, 3, 4, D. C. T. Club 4.

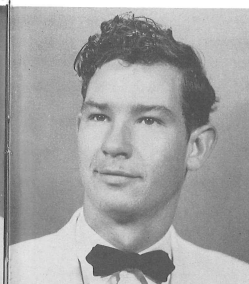
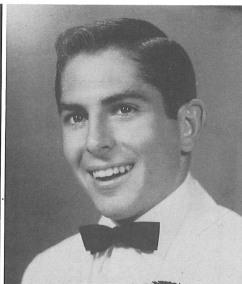
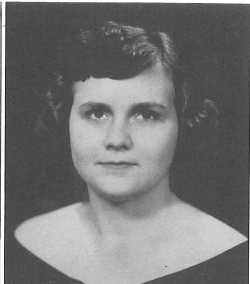
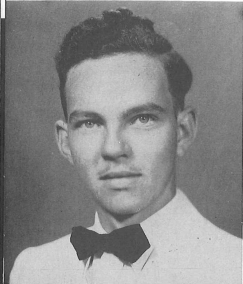
DOYLE SULLIVAN... D. C. T. Club 4, F. F. A. 1.

FRANKIE SUMNER... F. H. A. 1, 2, Vice-President 3, President 4, Beta Club 2, 3, 4, Pep Club 3, Homeroom Officer 2, 3, 4, Bible Appreciation Club 2, 3, 4, Band 3, Annual Staff 3, Business Manager 4, G. O. C. 2, Banquet Waitress 2.

PAUL TUCKER...Bible Appreciation Club 2, Spanish Club 1, F.F.A. 1.

WANDA TUCKER

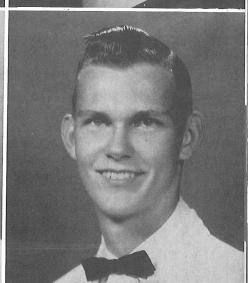
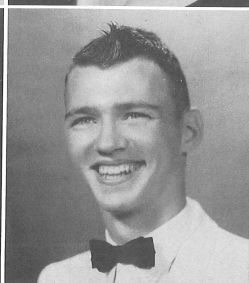
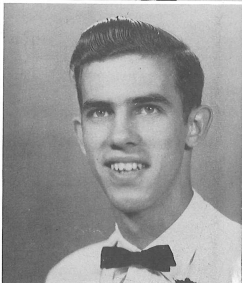
DWIGHT VALENTINE...Lettermen's Club 3, 4, Student Council 2, 3, 4, Baseball 1, 2, 3, 4, Football 1, 2, 3, 4, Track 3, 4, Class Treasurer 3, 4, Banquet Waiter 2.



WILLIAM WHITE

JOSEPHINE WILLIAMS...Pep Club 3, 4, F.H.A. 1, 2, 3, Homeroom Treasurer 2, 3, Junior Class Treasurer 3, Cheerleader 1, 2, 3, 4, Junior Notable 3, Homecoming Court 1.

MARIE WILLIAMS...Bible Appreciation Club 1, 2, 3, Student Council 2.



JEAN WADSWORTH...Chess Club 3, 4, Debate Club 3, 4, F.T.A. 1, 2, 3, 4, Bible Appreciation Club 2, 3, 4, Spanish Club 1, 2, Glee Club 4, Music Club 4, Operetta 4, Student Assistant 4.

MARY ANN WALDROFF...Pep Club 2, 3, 4, Homeroom Officer 2, 3, 4, Cheerleader 2, 4, F.H.A. 3, 4, Lettermen's Club 3, 4, Music Club 3, Bible Club 2, 3, 4.

OWEN WHISNANT

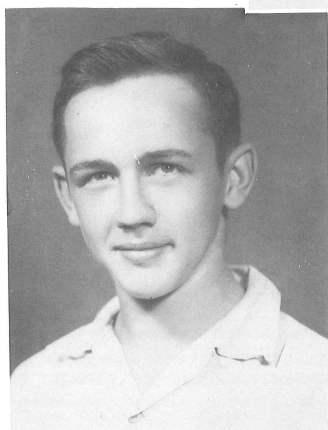
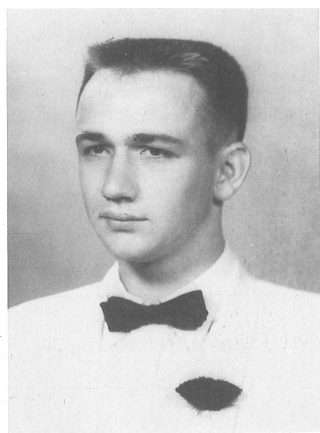
DOROTHY WILLIAMSON...Bible Appreciation Club 2, 3, 4, Glee Club 4, Music Appreciation Club 4.

GERALD WUBBEN...Bible Appreciation Club 2, 3, 4, Projector's Club 4, Music Appreciation Club 3, 4.

JON WUBENNA...Key Club 2, 3, 4, Lettermen's Club 3, 4, Baseball 1, 2, 3, 4, F.F.A. 1, 2, Homeroom President 2, 3, Vice-President 4, Track 3, 4.

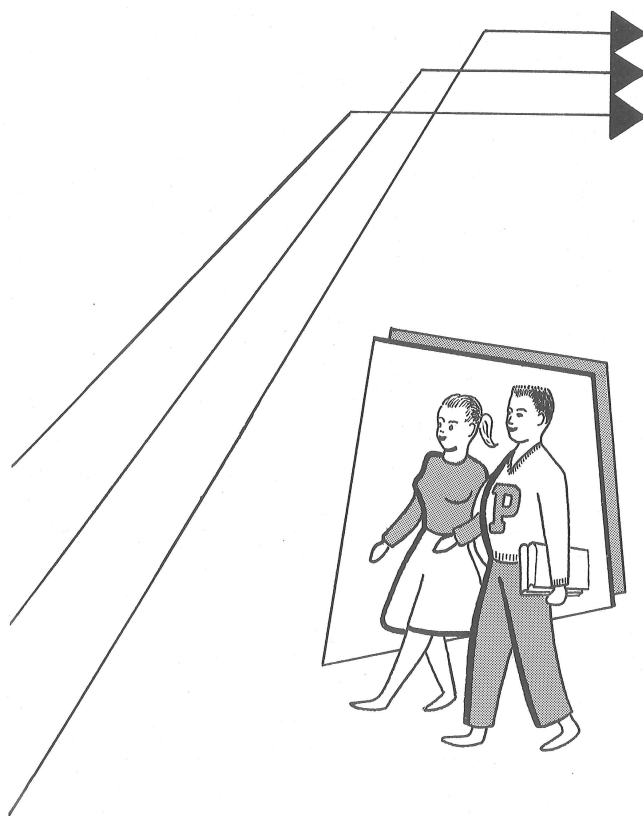
**IN
MEMORIAM**

AARON MITCHELL



TOMMY MITCHELL

JUNIORS





PRESIDENT Judy Touchton
 VICE-PRESIDENT Rusty Slough
 SECRETARY Wanda Conner
 TREASURER W. D. Townsend

OFFICERS

SPONSORS

MR. ROBERT BOOTH
 MRS. FRANCES BROWN



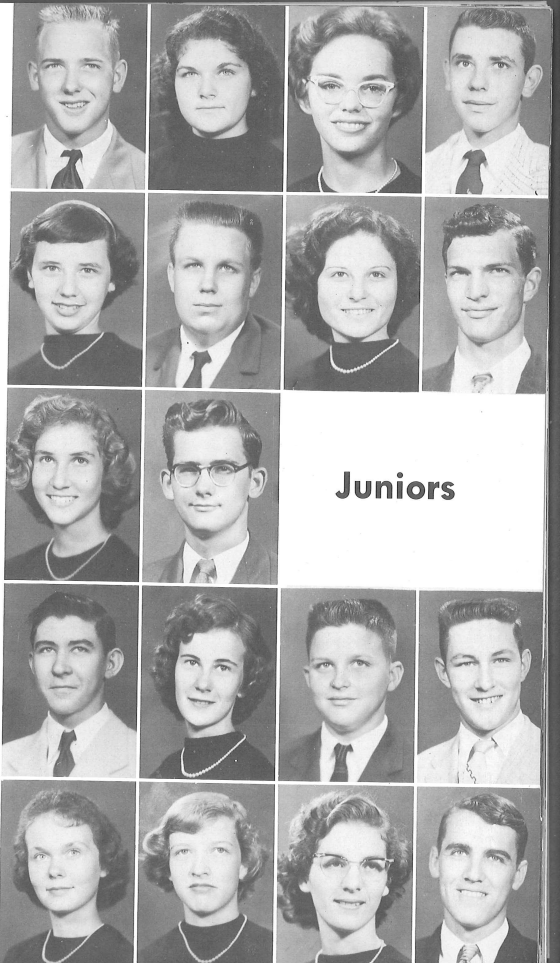
Gene Alford
 Audria Aughtman
 Barbara Bailey
 James Barthle

Joan Barthle
 Tommy Beaver
 Jean Beck
 Bobby Bennett

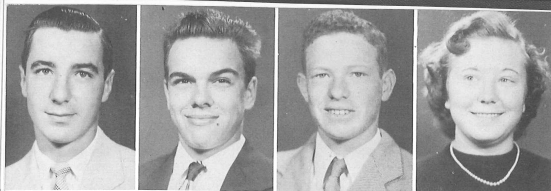
Phyllis Bolocanoff
 William Brannen

Thomas Breeden
 Nancy Brinson
 Titus Brinson
 Bobby Brooks

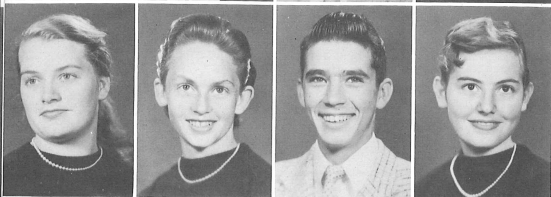
Roxine Bullington
 Elizabeth Burnsed
 Mary Butler
 Bobby Campbell



Juniors

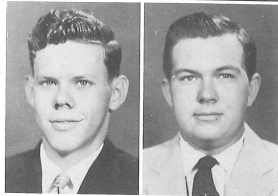


Joe Caruso
Albert Chapin
La Vold Chitty
Mary Cleveland

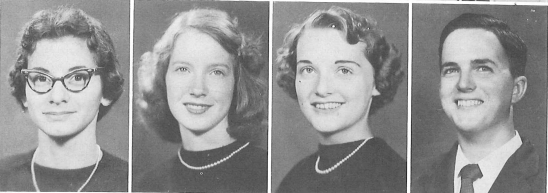


Pat Combs
Wanda Conner
Alva Cooper
Marian Cooper

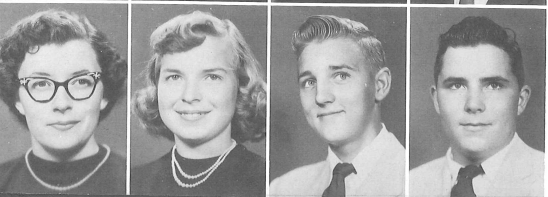
Juniors



Charlie Crawford
Harold Croft

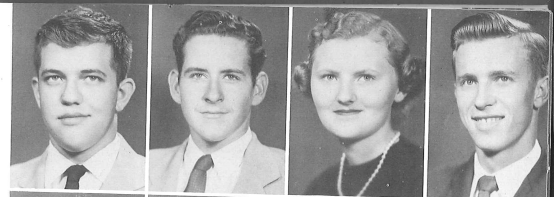


Linda Cusmano
Lois Day
Louise Denton
George Dew



Marbelle Dieffenwienth
Barbara Douglas
John Ducker
Thomas Edwards

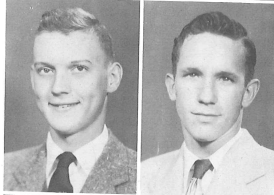
Bruce Elder
David Etheridge
Marjorie Etheridge
Gary Fagan



Doris Fleming
Barbara Gandy
Dorothy Gant
Betty Gay



Bobby Goldsby
Jimmy Green



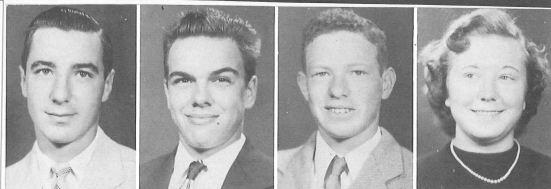
Juniors



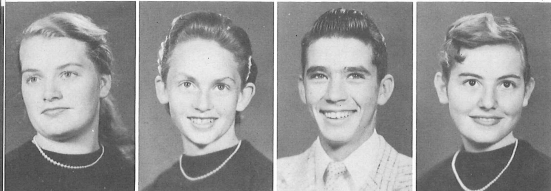
Melanie Groover
Mona Hall
Mary Hallman
Marie Hamby



Johnny Harrell
Sara Haymons
Barbara Hester
Norman Higgins



Joe Caruso
Albert Chapin
La Vold Chitty
Mary Cleveland

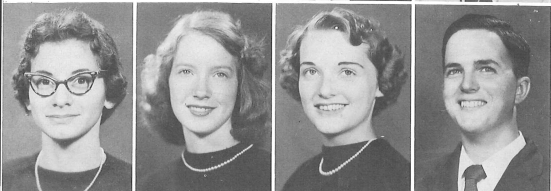


Pat Combs
Wanda Conner
Alva Cooper
Marian Cooper

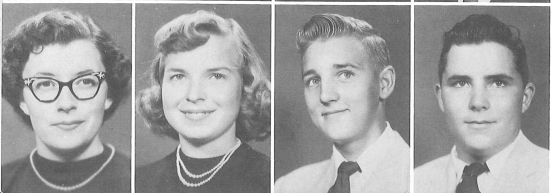
Juniors



Charlie Crawford
Harold Croft



Linda Cusmano
Lois Day
Louise Denton
George Dew



Marhelle Dieffenwierth
Barbara Douglas
John Ducker
Thomas Edwards

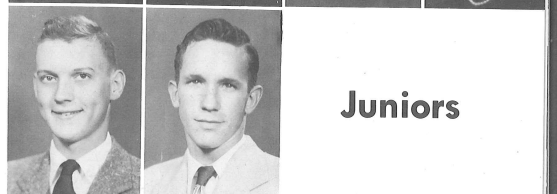
Bruce Elder
David Etheridge
Marjorie Etheridge
Gary Fagan



Doris Fleming
Barbara Gandy
Dorothy Gant
Betty Gay



Bobby Goldsby
Jimmy Green



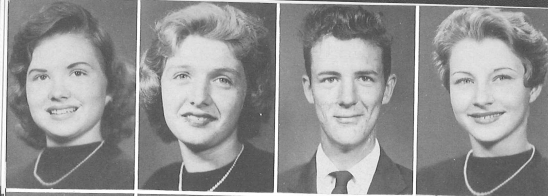
Juniors

Melanie Groover
Mona Hall
Mary Hallman
Marie Hamby

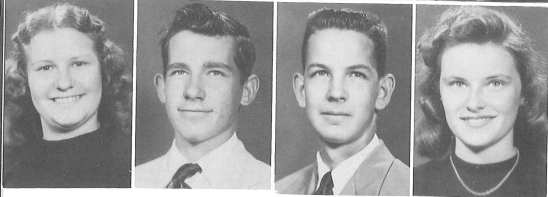


Johnny Harrell
Sara Haymons
Barbara Hester
Norman Higgins



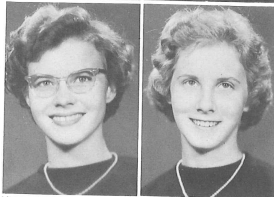


Rose Ann Hines
Arleen Holcomb
Jimmy Homan
Verna Hudson



Shirleen Huffstutler
Clayton Hutcherson
Jerry Johns
Jane King

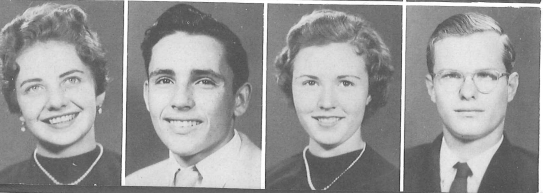
Juniors



Kathleen Kirkman
Charlotte Lane



Margaret Lawrence
Eulis Lewellen
Barbara Lingo
Patricia Loy

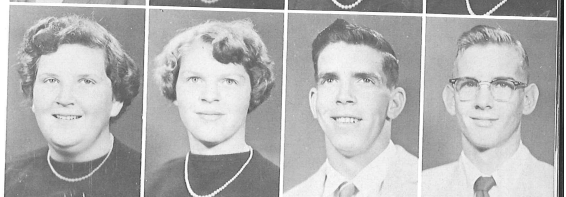


Eileen McGuire
Wayne McKindree
Nina Madill
Donald Maples

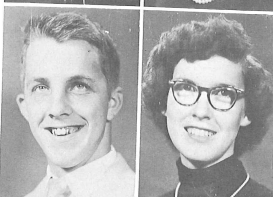
Bill May
Betty Meade
Lettie Merritt
Marjorie Messer



Carolyn Mickler
Judy Mickler
Louie Mims
Paul Miner



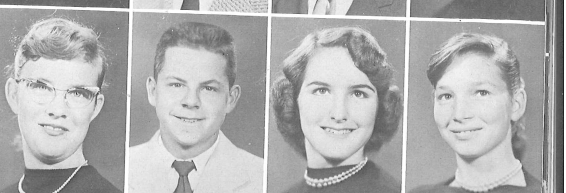
Danny Moore
Carolene Mullins



Juniors



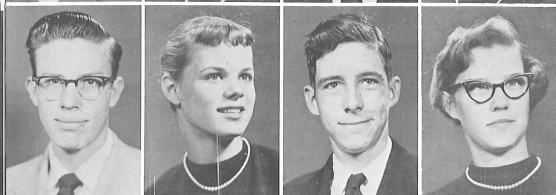
Diane Murray
Joe Nicholson
Bob Northrup
Barbara Parker



Mary Parker
James Pike
Sara Jo Pike
Jeanette Pinkston

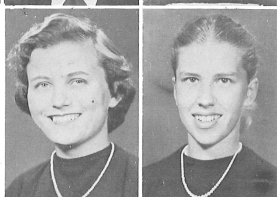


Charles Pire
Myrtle Pire
Kenneth Polk
Lucy Prince

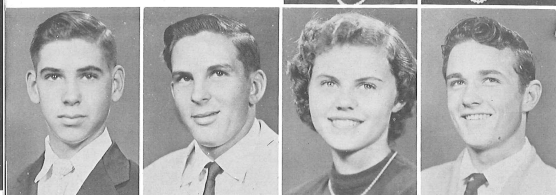


Russell Purvis
Harriet Reppard
Harry Rhodes
Janet Rhymer

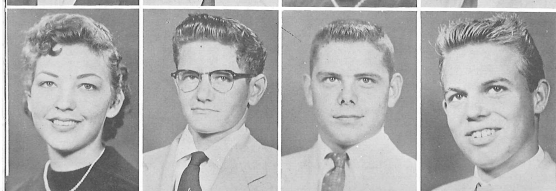
Juniors



Patricia Roberts
Sandra Rose

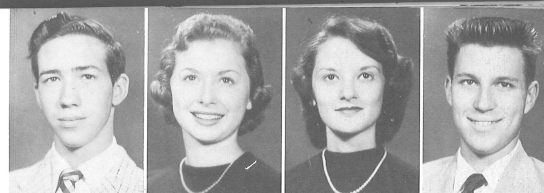


Brooks Roseman
Wyley Rosier
Ellen Russell
Danny Schofield

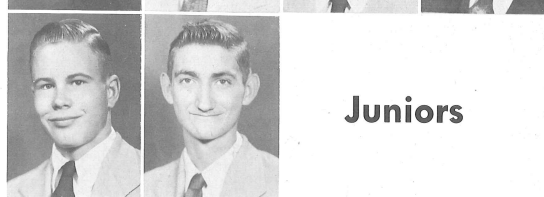
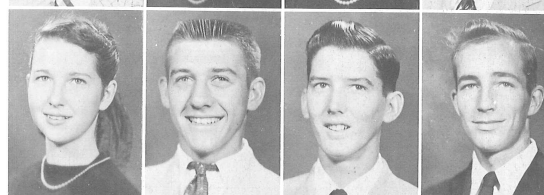


Virginia Shepard
John Simier
Rusty Slough
Butch Smith

Nelson Smith
Pat Smith
Barbara Stanley
Merrill Stebbins

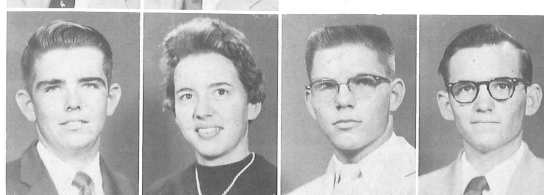


Carole Stephens
Johnny Stewart
Don Surrency
Bill Swann

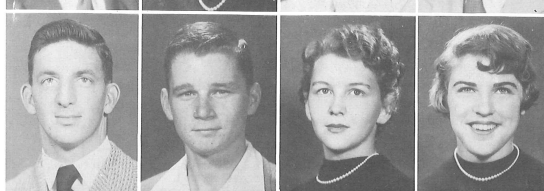


Jimmy Sweat
Gerald Tait

Juniors

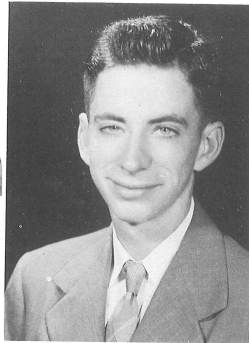
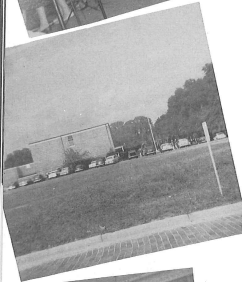


Perry Tait
Judy Touchton
W. D. Townsend
Ralph Webb

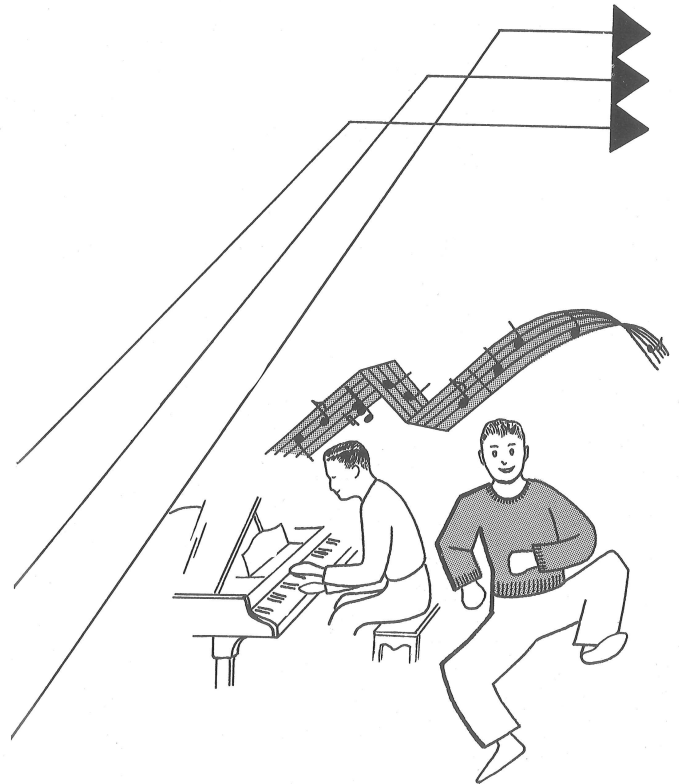
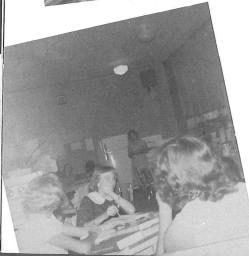


Billy Wilder
Bobby Williams
Faye Wilson
Carmen Whitcomb

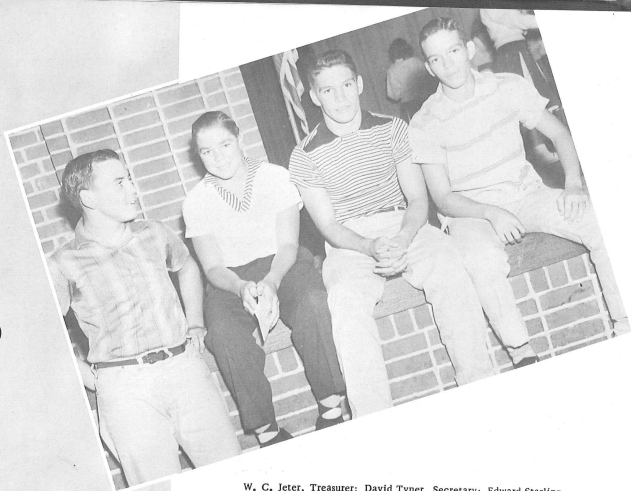
SOPHOMORES



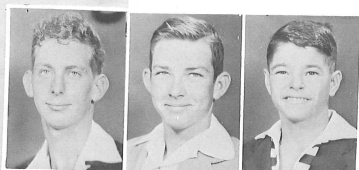
LARRY BAGGETT, a member of the class of '57, whose efforts during an extended confinement in a hospital will permit him to complete his high school work.
Best wishes to you, Larry!



OFFICERS

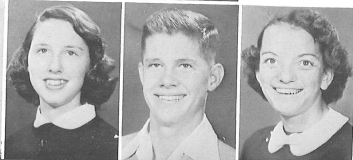


W. C. Jeter, Treasurer; David Tyner, Secretary; Edward Starling, Vice-President; Clyde Hobby, President.

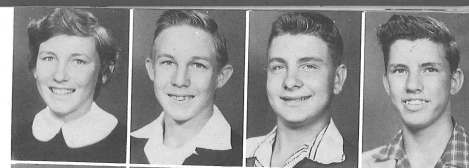


Blair Adams
Mack Anderton
Tony Ansley

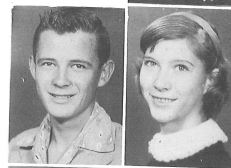
Beth Ashbrook
Bobby Aughenbaugh
Ouida Ausley



Betty Auton
Byron Auton
James Auton
Alvin Baldree



Mary Barnes
Joan Barry
Sandra Beckum
Lee Bennett



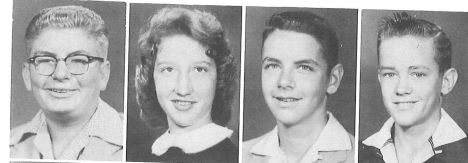
Lamar Bess
Barbara Best

Sophomores

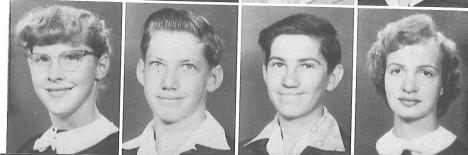


Z. W. Bettis
Joyce Beverly

Douglas Black
Dorothy Blommel
Jim Borch
James Brooks



Alma Bryant
Raymond Bryant
Herman Buchanan
Virginia Burger





Veda Burned
George Bush
Bonnie Butler
Virginia Butler

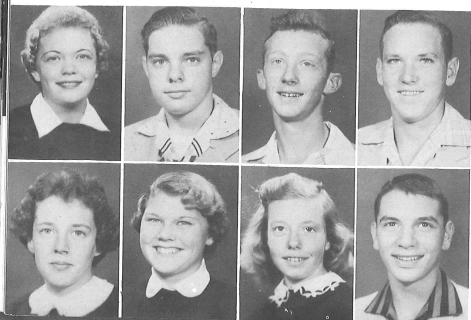
Rosalie Byrd
Tommy Cable
Rodney Carr
Gloria Cash

Anna Campbell



Sophomores

Wayne Carter



Martha Cheser
Dale Clark
Conway Cleveland
Sammy Colburn

Charlotte Corsey
Cecille Cribbs
Carolyn Crook
Mike Curtin

Henry Davis
Carl Deal
Mary Frances DePue
Charles Dewey



Bruce Dickinson
June Dooley
Ronald Dupree
Faye Dyal



Lenoir Ehlers

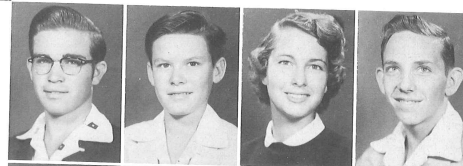


Sophomores

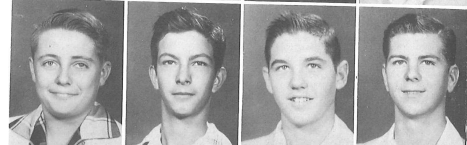
Ruth Enfinger

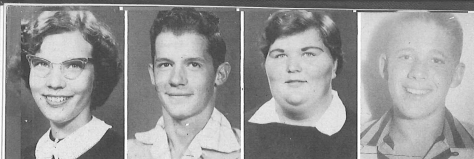


Ernest Epting
John Evans
Betty Fagan
Wendell Faircloth



John Fehlberg
Frank Frassrand
Marvin Gaddis
Lamar Geohagan





Jo Ann Gillett
Kermit Gillette
Christine Grantham
Virgil Grimes



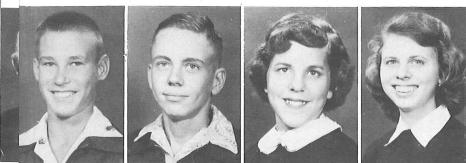
Margie Groover
Wayne Gude
Zelma Hammons
Nicky Harper

Florence Harris

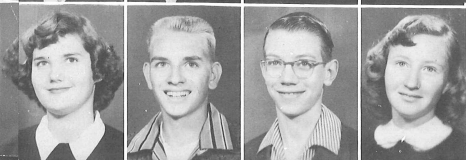


Sophomores

Russell Harvey

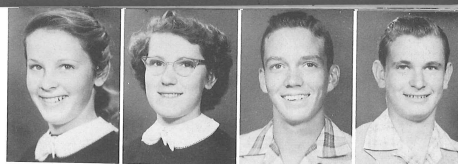


Cecil Hauff
Robert Hauffman
Janice Heabertin
Ollie Helms

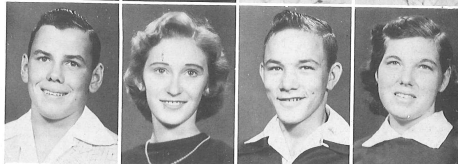


Charlotte Henderson
Gerald Hendricksen
Freddie Hensley
Barbara Jean Hicks

Audrey Hobbs
Dorothy Hobbs
Clyde Hobby
Don Jenkins



W. C. Jeter
Dorothy Johnson
Ellis Johnson
Arvis Jones



Charlynn Jones



Sophomores

Melinda Jones

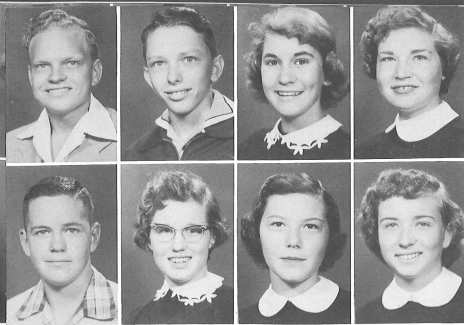


Pete Joyce
Evelyn Kelly
Betty Langston
Franklin Larramore



Jean Leisure
Duvie Leuellen
Evadene McCullers
Lucille McKindree





Donald McKinney
Thomas McKinney
Elsie McKinstry
Eva Sue McLendon

Earl McNatt
Charlotte Martin
Julia Massey
Erosalyne Matthis

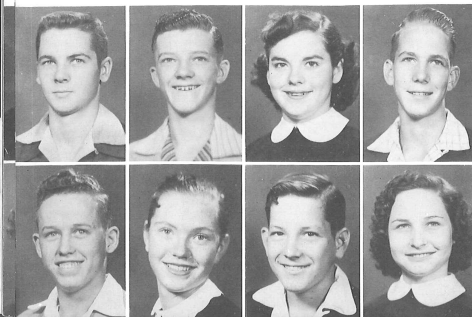
Lavera Mercer



Walter Merritt



Sophomores



John Mills
Marvin Moore
Virginia Moorehead
Mark Nathe

Edward Neel
Penny Nolen
Roscoe Osborn
Betty Overstreet

Jewel Owens
George Parker
Bill Ponge
Judy Pruett

Warren Purkis
Lee Ramsey
Ray Ramsey
Tommy Reedy

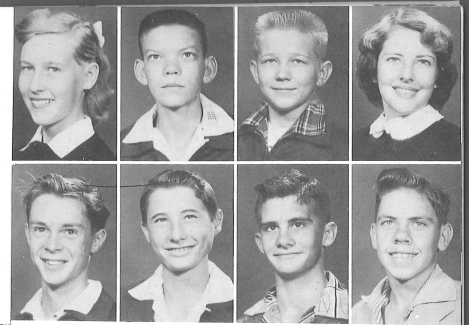


Betty Register



Billy Rice

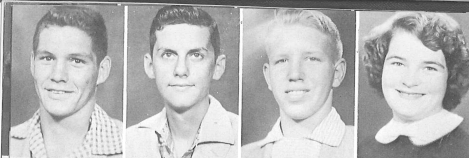
Sophomores



Jim Riggs
Pat Roberts
Bill Roney
Vadie Rutherford

Connie Sheehan
C. B. Simpson
Dorothy Sprattin
Jimmy Sprigg





Edward Starling
Robert Stewart
Bobby Stittler
Evelyn Stone



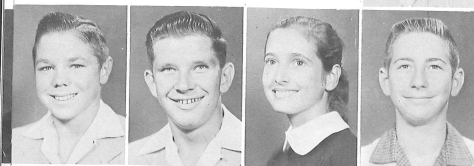
Ellen Strickland
Dale Suber
Faye Sumner
Billy Surratt

Shirley Swanson
Bar Swieringa

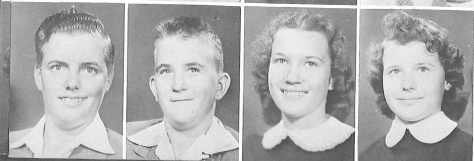


Sophomores

Larry Tait
Gary Trunnell



David Tyner
Paul Webb
Ruth Williams
Johnny Willis

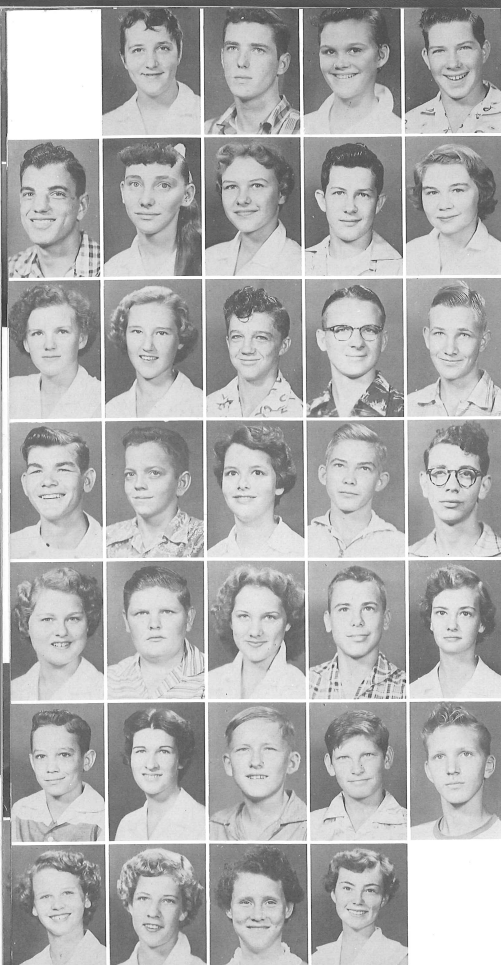


James Woodham
Jerry Woodham
Shirley Worrell
Patricia Wright

FRESHMEN



Douglas Newsome, Treasurer; Linda Larkin, Secretary; Nancy Johnson, Vice-President;
Jim Geiger, President.



Abney
Adams
Allen
Alsbrook

Ausley
Auton
Baldwin
Barbee
Barfield

Beaver
Benefield
Best
Blitch
Blommel

Bodiford
Booth
Borck
Boyd
Boyett

Boyett
Boyt
Brannon
Brice
Brimon

Brooks
Brooks
Brooks
Buchanan
Buffkin

Burkett
Burnsed
Buttram
Campbell

Carr
Carr
Carter
Caruso

Canthers
Cavin
Chandler
Christian
Clark

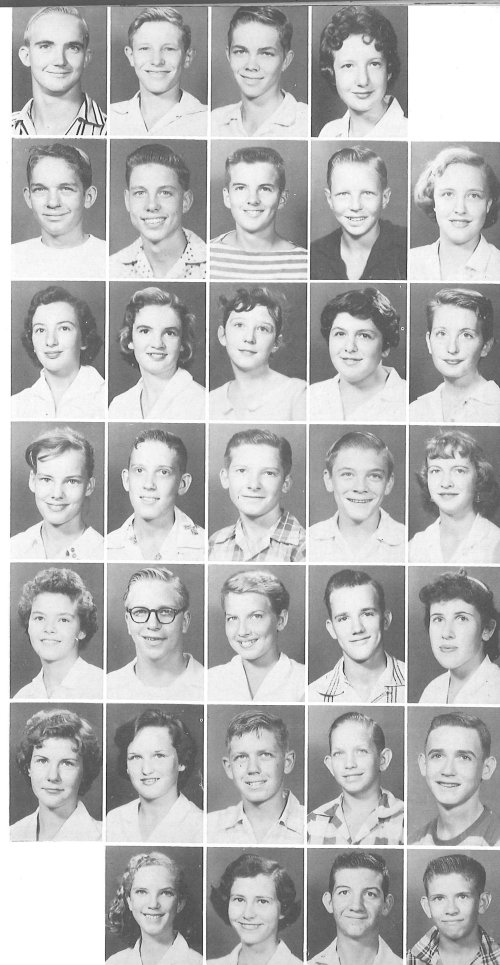
Clark
Clements
Cleveland
Collura
Cooper

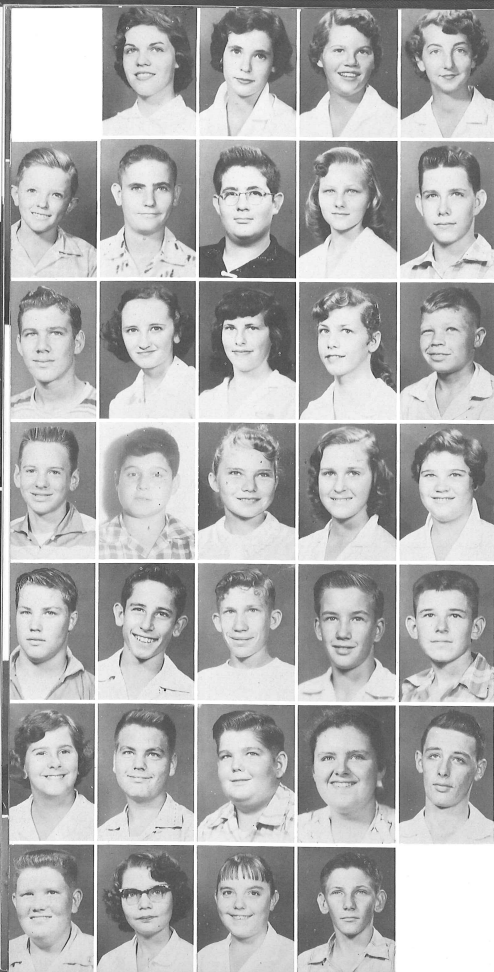
Cosey
Couey
Croft
Crow
Davis

Devane
Dixon
Douglas
Duncan
Dudley

Etheridge
Etheridge
Evans
Faircloth
Faulk

Fennell
Fleming
Floyd
Fountain





Foxworth
France
Freeman
Gant

Gant
Gaskin
Gaskin
Gaskin
Gelger

Glover
Goolby
Gooden
Graham
Graham

Gray
Gresh
Gude
Hall
Hamilton

Hamilton
Harrell
Harris
Hartzog
Harvey

Heaberlin
Hemingway
Henderson
Hibbard
Hicks

Hillman
Hines
Hobbs
Holmes

Howard
Howard
Hudson
Hughes

Jetton
Johannes
Johnson
Johnson
Johnson

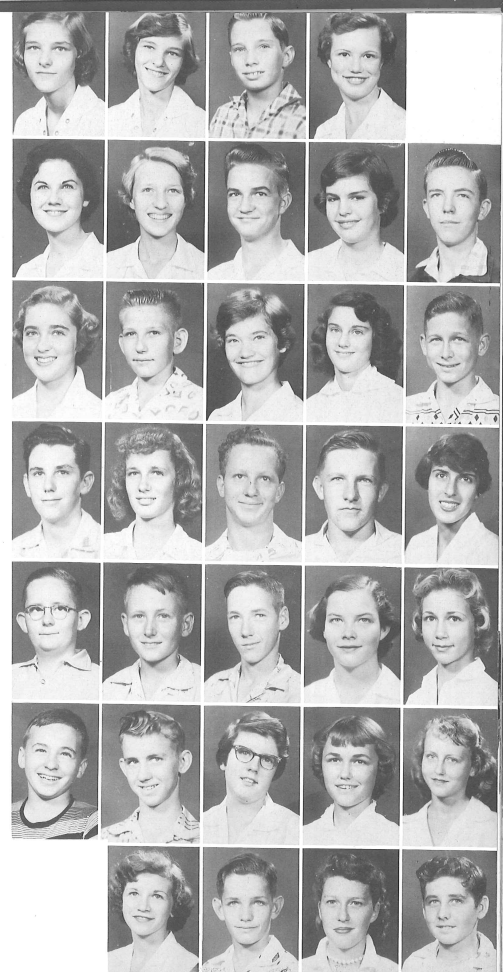
Johnson
Jones
Jones
Jones
Jordan

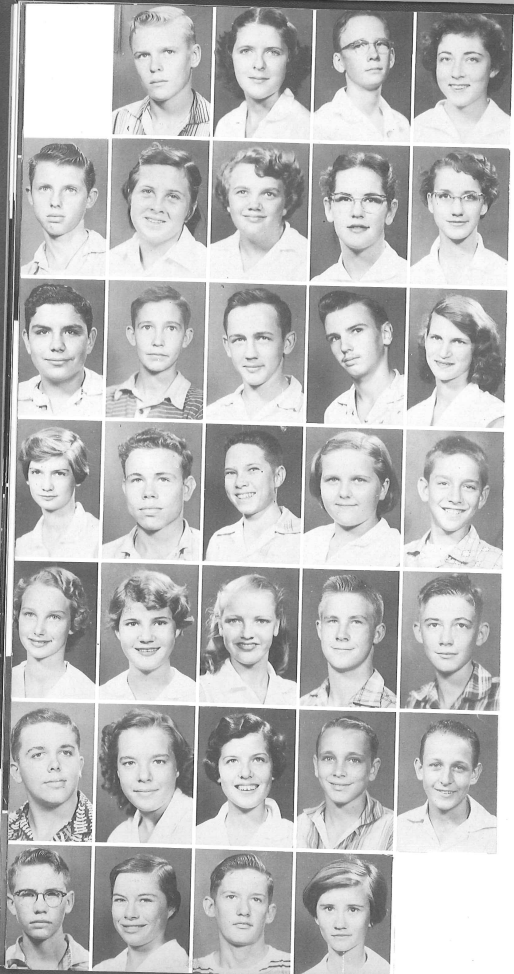
Jordan
Joyce
Joyner
Keith
Kelley

Keyser
King
King
Kirkman
Larkin

Lay
Lewis
Lingo
Lipham
Long

McElveen
McGowin
McGuire
McGuire





McNary
Mann
Mathis
Matthis

Mattison
Mengerson
Mercer
Merchant
Messick

Meyer
Mitchell
Mitchell
Mobley
Moffett

Moody
Moody
Moore
Morgan
Naber

Nathe
Nelson
Nelson
Newsome
Newton

Nichol
Norman
Northrup
Oakley
Osteen

Parker
Parrish
Parrish
Parrish

Payne
Pike
Pinkston
Ponder

Pruett
Purkis
Reeder
Register
Roberson

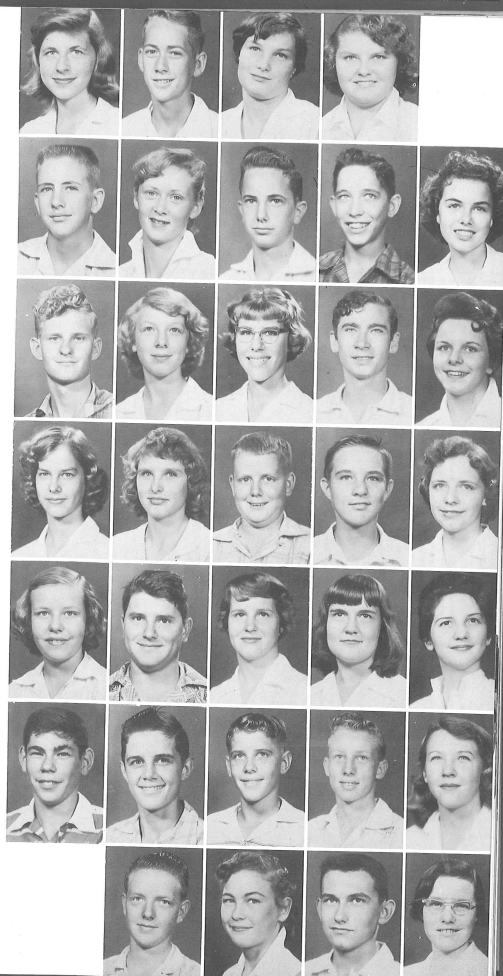
Rogers
Roney
Rose
Rowland
Roye

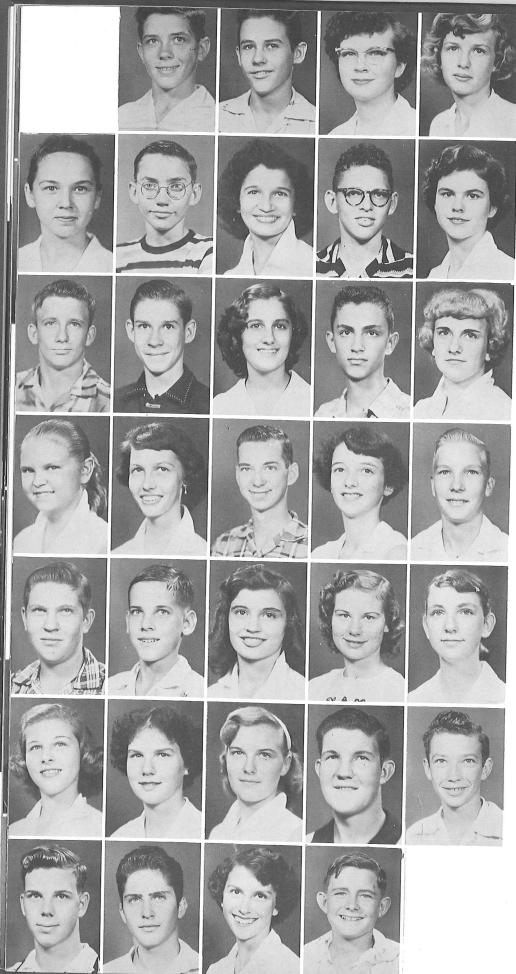
Rutherford
Sasser
Sawyer
Schofield
Sesoms

Shannon
Shearer
Simmons
Skinner
Smith

Smith
Smith
Smith
Stancil
Stephens

Stephens
Stewart
Stouse
Strickland





Strickland
Sullivan
Summer
Sutton

Swesey
Tait
Taylor
Thomas
Thomas

Tucker
Twig
Vann
Waldroff
Ward

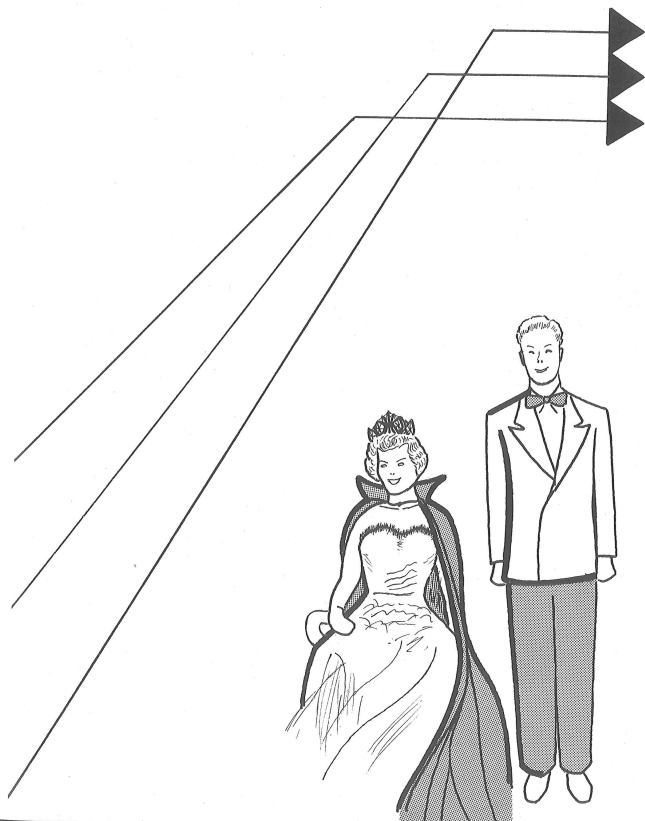
Ward
Ward
Weaver
Webb
Weeks

Whiddon
Whinam
Whitaker
White
Whitten

Wilder
Williams
Willman
Wilson
Wood

Yon
Young
Young
Roberts

LAURELS





King And Queen

Bennett More and Judith Lindsay

Senior Court

Charles Bolton
Josephine Williams
Gloria Baldwin
Van Pittman



Junior Court

Billy May
Margaret Lawrence
Wanda Conner
Gene Alford





Senior Notables

Best Looking

Bennett More
Gloria Baldwin

Best Personality

Gloria Baldwin
Charles Bolton



Most Talkative

Dora Singletary
Philip Shettle

Most Co-Operative

Van Pittman

Judith Lindsay

Most Popular Likeliest to Succeed

Most Representative Best All-Around

Judith Lindsay

Charles Bolton



Most Talented

Bill Dutcher

Mary Frances Farmer





Best Dressed

Van Pittman
Martha Jackson



Most Studious

Don Porter
Marion Ditter



Wittiest

Martha Jackson
Philip Shettle



Cutest

Nina Jernigan
Virgil Starling



King and Queen Of Sports

Eva Heufel
Booty Valentine



Most Flirtatious

Josephine Williams
Bennett More

Junior Notables

Best Looking

Margaret Lawrence
Rusty Slough



Most Popular

Bill May
Harriet Reppard





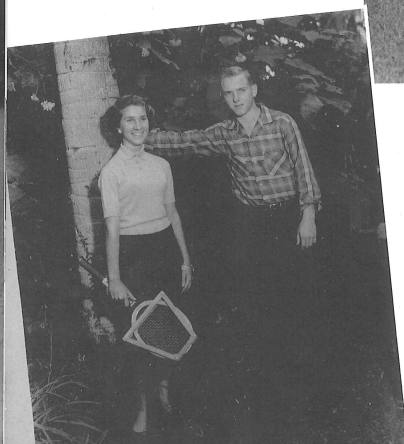
Most Co-Operative
Most Representative

Judy Touchton
Bobby Goldsby



Most Studios

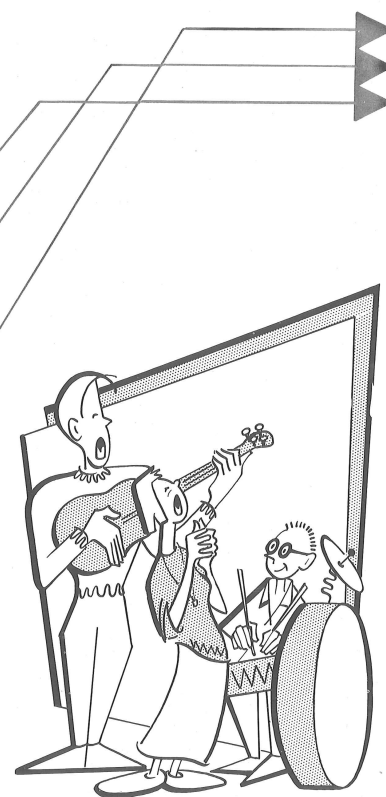
Bill May
Sandra Rose

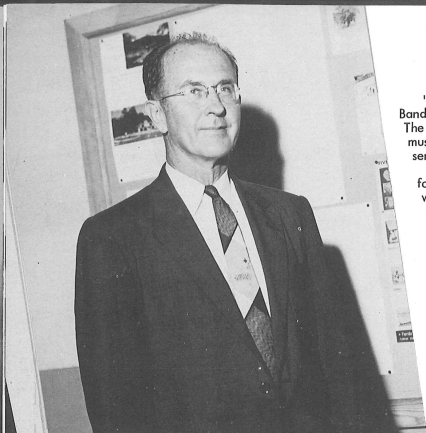


Most Athletic

Phyllis Bolocanoff
Gene Alford

ACTIVITIES





Band

"Our school is very proud of the Pasco "Pirate" Band, both for its marching and playing ability. The bright red and white uniforms and stirring music catch the eye and ear at ball games, assemblies and parades.

This year the band participated in all nine football games. The parades they attended were the Latin Fiesta, Strawberry Festival, Sara Desoto Pageant, Fla. Southern College Founders Day, Fun In The Sun, Founders Day in Zephyrhills, and many local parades.

They were present for the Post Office dedication, pep meetings, assemblies, and competed in the District Contest in Winter Haven.

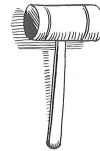
They opened baseball season, gave assembly concerts, and held their annual Spring Concert in April.

With the outstanding talent of the members of the band, and the capable leadership of our director, Mr. William C. Fingerhut, the band can look forward to even a better year of music next year.



Student Council

CHARLES BOLTON
President
GENE ALFORD
Vice-President
JIM BORCK
Secretary-
Treasurer
MR. RODGERS
Sponsor



Beta Club

CHARLES BOLTON
President
DON PORTER
Vice-President
(not shown)
NINA SUE MADILL
Secretary
GLORIA BALDWIN
Treasurer
(not shown)
MRS. WETTER
Sponsor



Majorettes

Melinda Jones

Carole Franco

Patricia Payne

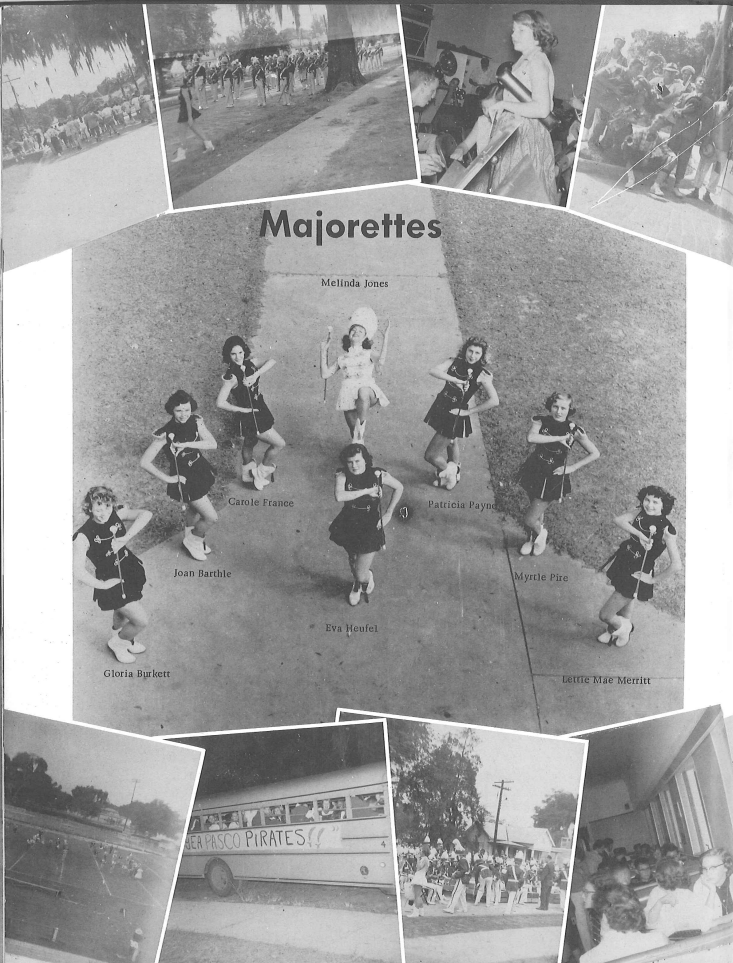
Joan Barthle

Myrtle Piro

Eva Heufel

Gloria Burkett

Lettie Mae Merritt





Pep Club

Charles Bolton, President; Gloria Baldwin, Vice-President (not shown); Margaret Lawrence, Secretary; Judith Lindsay, Treasurer; Mr. Jordan, Sponsor.



Key Club

VAN PITTMAN
President
CHARLES BOLTON
Vice-President
DON PORTER
Secretary
JON WUBBENA
Treasurer
MR. JORDAN
Sponsor



Annual Staff



Judith Lindsay, Editor; Frankie Summer, Associate Editor; Charlotte Lane, Jr., Editor; Bobby Goldaby, Jr., Associate Editor; Mr. Smith, Sponsor.

Pirate Log Staff

LOLA SIMLER
Editor
BETTY JEAN JONES
Assoc. Editor
SALLY NORTHRUP
Feature Editor
EMILEE GROSSENBACHER
Ad. Editor
MR. BATSON
Sponsor



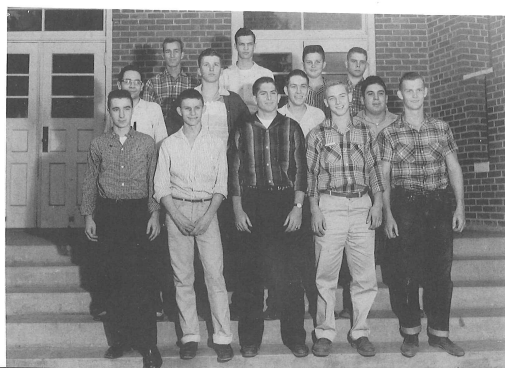


Officers

BETTY JEAN JONES
President
PHYLIS BOLOCANOFF
Vice-President
GERALD WUBBENA
Treasurer
JOAN BARTHE
Secretary
MARY FRANCES FARMER
Planner
CHARLOTTE LANE
Program Chairman
(not shown)
MISS BETTY JEAN
GRIFFIN and MR.
FLOYD PHILMON
Sponsors

Bible Appreciation Club

Lettermens Club



BENNETT MORE
President
VIRGIL STARLING
Vice-President
BOOTY VALENTINE
Secretary-Treasurer
MR. BOOTH
Sponsor

FFA

LOUIS COLLURA
President
MARION DEWEY
Vice-President
RAY HARRIS
Secretary
BOB NORTHROP
Treasurer
HAROLD CROFT
Reporter
JEFF JETER
Sentinel
MR. ELMO COLLINS
Advisor
MR. FLOYD PHILMON
Advisor



Frankie Sumner, President; Kathleen Kirkman, Projects Chairman; Betty Jean Jones, Program Chairman; Shirley Bettis, Secretary; Mary Ann Waldroff, Treasurer; Mary Frances Farmer, Historian; Gloria Cash, Parliamentarian; Martha Chesser, Musician; Miss Ruth Lewis and Miss Betty Jean Griffin, Advisors.



FHA





4-H

ALICE GUDE
President of Girl's
County Council

ERNEST HEMINGWAY
President of Boy's
County Council

JOHNNY HARRELL
Club President



FTA

VERNA HUDSON
President
MARION DITTER
Vice-President
MARGARET LAWRENCE
Secretary
PAT SMITH
Program Chairman
LOIS GALSTER
Historian
MRS. McKILLIPS
Sponsor



Office Training



DCT

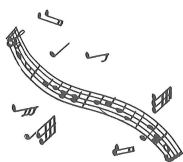
CHARLES JOHNSON
President
DORA SINGLETARY
Vice-President
LORETTA MOSES
Secretary
RUTH HILLARD
Treasurer
LOIS GALSTER
Historian
JAMES BARTHLE
Sergeant of Arms
JOAN SLATER
Reporter
MRS. HENDERSON
Sponsor





Glee Club

RAINEY COUNCIL
President
PHILIP SHETTLE
Vice-President
MARTELLE DIEFFENWIERTH
Secretary
GERALD WUBBENA
Reporter
MRS. BYRD
Sponsor



Projector's Club

BUTCH SMITH
President
GERALD WUBBENA
Vice-President
BOBBY BROOKS
Secretary
MISS HALE
Sponsor



Junior Lions Club

JOHN DENNIS
President
BOB NORTHROP
Vice-President
(not shown)
BILL SWANN
Secretary
BILL RONEY
Treasurer
MR. RODGERS
Sponsor



Lionettes

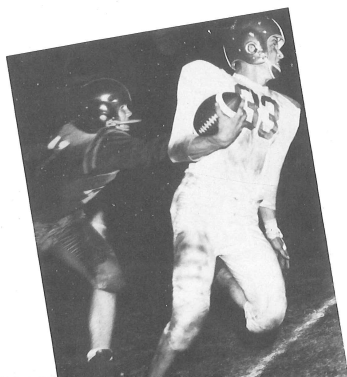
BETTIE BRICE
President
(not shown)
JUDY TOUGHTON
Vice-President
MELINDA JONES
Secretary
JULIA MASSEY
Treasurer
MRS. BYRD
Sponsor



FOOTBALL 1956



Assistant Coaches Bob Booth, Jim Pannell, Gary Jordan, and Athletic Director, Joe Caruso.



SCHEDULE SOUTHWEST FLORIDA ATHLETIC CONFERENCE

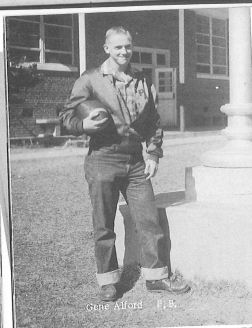
	Opponents	Passo
Sept. 21-Turkey Creek	41	18
Oct. 5-Bartow	7	13
Oct. 12-Ft. Myers	25	0
Oct. 19-Winter Haven	6	13
Oct. 26-Lake Wales	14	19
Nov. 2-Wauchula	21	38
Nov. 9-Leesburg	28	18
Nov. 16-Haines City	13	27
Nov. 22-Plant City	20	6

86

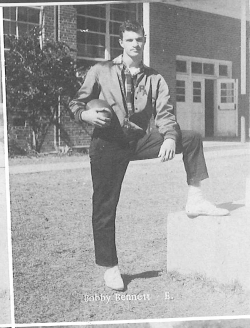
Our hats are off to the Pirates for another top season! The Pirates began this year under the direction of a new coach, Joe Caruso. At the end of the season we had a conference standing of 5-1 and a season record of 5-4. In the conference we tied for first place with Bartow and Plant City. We had two on the all-conference team this year, Bennett More and Gene Alford. The football manager was Mac Holmes. The season was climaxed with the annual football banquet and the Pirate Boosters were the hosts.



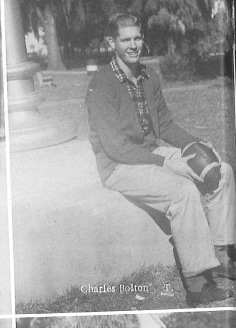
FIRST ROW, LEFT TO RIGHT: Kenneth Polk, Titus Brinson, Johnny Stewart, Rusty Slough, Jeff Jeter, Joe Caruso, Tommy Neely, Aaron Mitchell, and Jim Riggs. SECOND ROW: Bennett More, Douglas Newsome, Brooks Roseman, Joe Nickolson, W. D. Townsend, Melton Godwin, Edward Starling, Gene Alford, Robert Henley, Tom Edwards, Virgil Starling. THIRD ROW: John Brinson, Louie Mims, Royce Adams, Tommy Law, Bobby Bennett, Charles Bolton, Bill May, Dennis Heuring, and Booty Valentine.



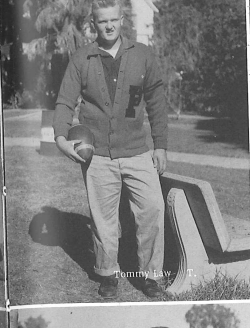
Gene Allford P.B.



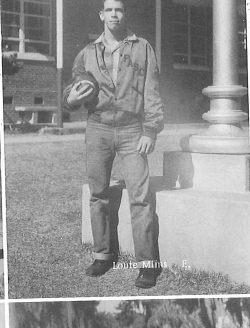
Bobby Kneen B.



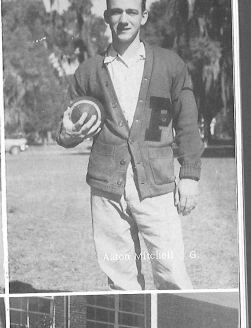
Charles Bolton T.



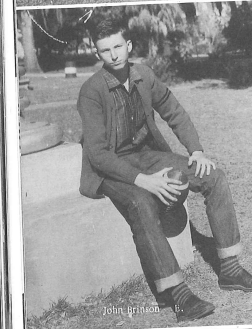
Tommy Law P.



Louis Miller B.



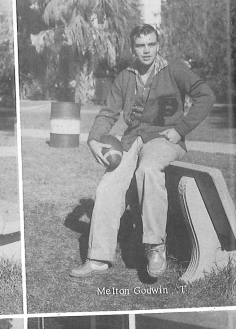
Aaron Mitchell G.



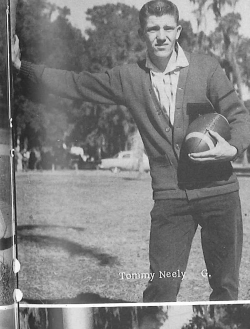
John Brisson B.



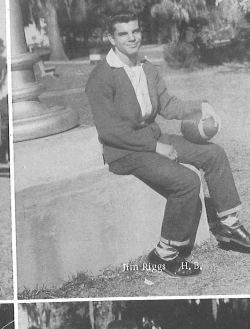
Louis Collura Q.



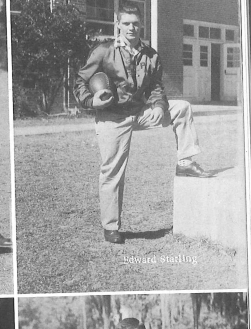
Melton Godwin T.



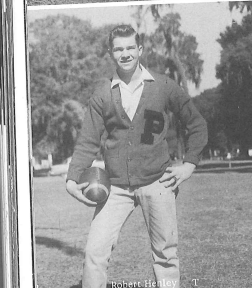
Tommy Neely G.



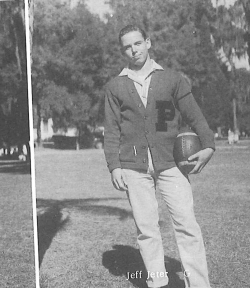
Jim Pegg A.B.



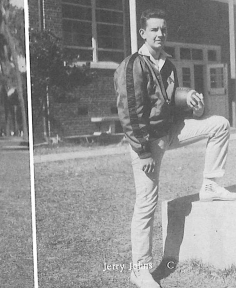
Barbara Stalling



Robert Halley T.



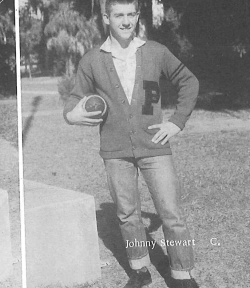
Jeff Jaffe



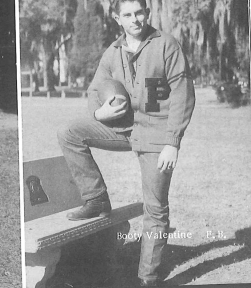
Jerry Jaffe G.



Virgil Stalling B.



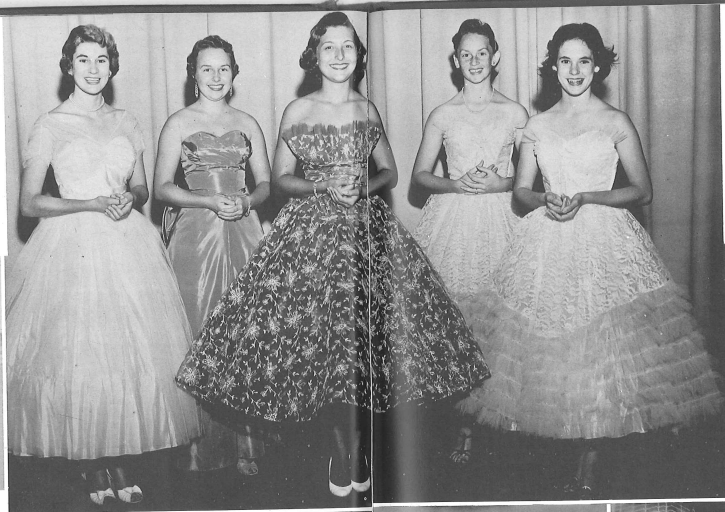
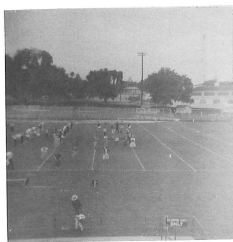
Johnny Stewart G.



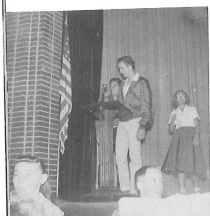
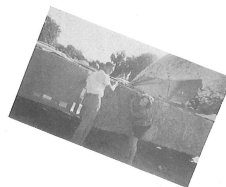
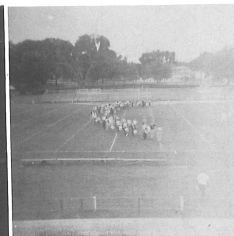
Bobby Valentine P.B.

Homecoming

Elsie McKinstry, Sophomore attendant; Gloria Baldwin, Senior attendant; Judith Lindsay, Queen.



Wanda Conner, Junior attendant; Carole France, Freshman attendant.



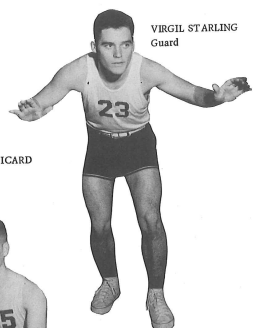
Basketball 1957



CHARLES BOLTON
Center



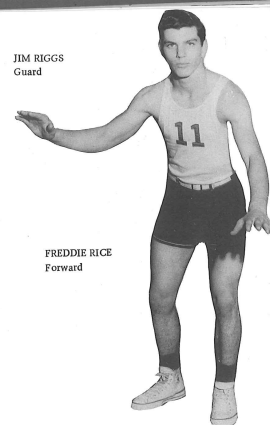
RONALD PICARD
Guard



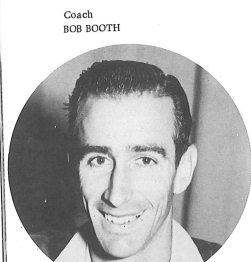
VIRGIL STARLING
Guard



JIM RIGGS
Guard



FREDDIE RICE
Forward



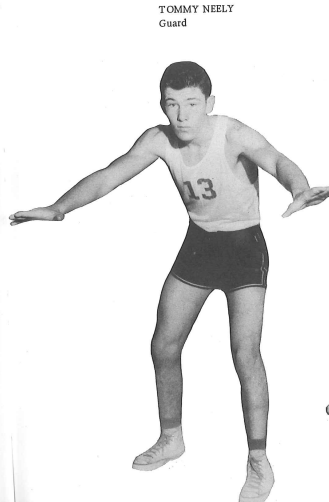
Coach
BOB BOOTH



JERRY JOHNS
Center



JOE CARUSO
Guard



TOMMY NEELY
Guard



LARRY FLANNERY
Forward



DON PORTER
Forward



BOBBY GOLDSBY
Pitcher



MARVIN MOORE
Right Field



JON WUBBENA
Left Field



CLYDE HOBBY
Second Base

Pasco High School
Pirates
1957 Baseball Schedule
*Southwest Florida
Athletic Conference*

Mar. 8	- Kathleen	- Away
Mar. 12	- Gulf High	- Home
Mar. 15	- Plant City	- Home
Mar. 18	- Bartow	- Away
Mar. 22	- Winter Haven	- Away
Mar. 25	- Hialeah City	- Away
Mar. 29	- Fort Myers	- Home
Mar. 30	- Fort Myers	- Home
Apr. 2	- Gulf High	- Away
Apr. 5	- Lake Wales	- Home
Apr. 6	- Avon Park	- Away
Apr. 9	- Lake Wales	- Away
Apr. 12	- Bartow	- Home
Apr. 16	- Ocala	- Away
Apr. 18	- Wauchula	- Away
Apr. 23	- Plant City	- Away
Apr. 26	- Hialeah City	- Home
Apr. 29, May 1, 2, 3	Conference Tournament at Wauchula	



OWEN MOODY
Third Base



BOBBY ABNEY
Pitcher



EDWARD STARLING
Short Stop



BOOTY VALENTINE
Catcher



COACH FANNELL



LOUIE MIMS
Center Field

TRACK

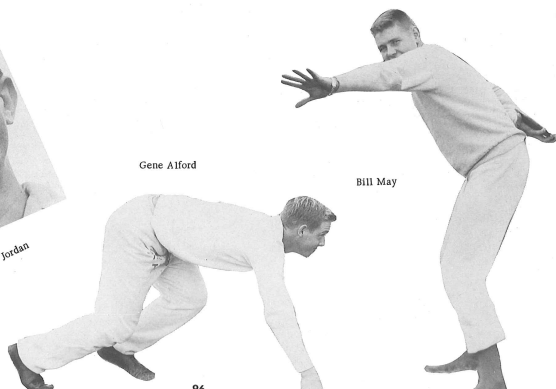
1957



FIRST ROW, LEFT TO RIGHT: Louie Mims, Jimmy Sprigg, Gene Alford, Bill May, Joe Nicholson, Buddy Grimes, and Rusty Slough. SECOND ROW: Jan Jones, Billy Waldroff, Johnny Stewart, John McGowin, Bobby Williams, and Dick Albert. THIRD ROW: Manager, Pat Roberts; Wayne Carter, Ray Ramey, Marvin Gaddis, Mike Pruett, Albert Spencer, and Manager, Mac Holmes.



Coach Jordan



Gene Alford

Bill May

96

Cheerleaders



Margaret Lawrence
CAPTAIN

Colliers

Harriet Reynolds
CO-CAPTAIN

Joe Nicholson

Gloria Cash

Penny Nolen

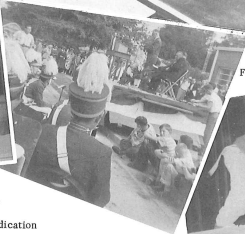
Bettie Brice

Pat Smith

City Officials



Winners in the
Voice of Democracy
Contest



F.H.A. Initiation



Dedication
of
New Seats

P. O. Dedication

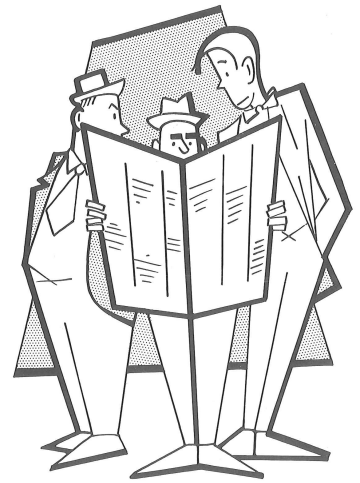


We got a few, too!

We raised over \$1,500.



ADS



CONGRATULATIONS

and

BEST WISHES

To The

Class of '57

PASCO PACKING CO.

Old South * Pasco
Floridagold

THE WORLD'S LARGEST CITRUS PROCESSING PLANT

Compliments of

WHITE MOTOR COMPANY

5th and Pasco

Dade City, Florida

DODGE

PLYMOUTH

Your Dependable

DEALER

DODGE PASSENGER CARS



DODGE Full-Size TRUCKS

Complete Service



Regardless of the make of car you drive.

**DODGE 2-DOOR CUSTOM
ROYAL LANCER**



YOU HAVE NEVER SEEN, FELT, OWNED ANYTHING LIKE IT!

MADILL HARDWARE & PLUMBING SUPPLY

408-10 North 7th Street

Phones: LOgan 7-3477; LOgan 7-3376

Dade City, Florida

Complete Line of Hardware, Housewares, and Plumbing Supplies

Compliments
of

DANIEL FURNITURE COMPANY

Dade City

Florida

SESSOM'S GROCERY

423 North 7th Street

Dade City

Store Hours

7:30 A. M. till 8:00 P. M.

Compliments of

ROPHIE'S DEPARTMENT STORE

309 West Meridian Avenue

Dade City

Florida

Compliments

of

JOE HERRMANN'S INC.

SAF-T-GAS SERVICE

COLEMAN & FERGUSON FUNERAL HOME

71 Years of Faithful Service

BACKED BY EXPERIENCE, EQUIPMENT, AND REPRESENTATION

Day or Night

Phone LOgan 7-5191

1957

Finest Buick Yet
Thrill of the Year

ALEXANDER BUICK COMPANY

616 South 5th Street

Dade City

Phone LOgan 7-5197

Florida

Compliments of

SPRIGG ELECTRIC COMPANY

Phone LOgan 7-3456
606 South 5th Street

Dade City

Florida

STAHL'S SINCLAIR SERVICE



107 North 7th Street
Dade City, Florida

FLORIDA OFFICE SUPPLY INC.

Complete Line of Office

Supply and Equipment

Dade City

Florida

Compliments of

BELK-LINDSEY COMPANY

"Pasco County's Largest
Department Store."

Phone LOgan 7-3970
301 Meridian Avenue

Dade City

Florida

VITA-CRAFT

Distributor for

Famous Vita Seal System Cooking

Belk Lindsey Bldg.

P. O. Box 37

Phone LOgan 7-5404 or 2566



For The Finest In Products and Service

THE SINCLAIR REFINING COMPANY

Lewis Abraham
Lorise Abraham
Don Aughenbaugh

Archie Shoard
Splash Shoard
Fred Hooks

WATSON-WALTERS LINCOLN-MERCURY

International Trucks and Tractors

Hwy. 301 North

Dade City

Florida

STANDARD AUTO PARTS

Motor Rebuilding
Machine Shop Service
Automotive Equipment

Phone Logan 7-5127

Dade City, Florida

Congratulations To The Graduating Class of 1957
From

CLAY HYDER TRUCKING LINES, INC.

301 Highway North

Dade City, Florida

Phone LOgan 7-5101

"Ready Reliable Refrigerated Service"

Compliments of:

TOUCHTON INSURANCE AGENCY

INSURANCE COUNSELORS

Representing
Life - Auto - Fire - Bonds

P. O. Box 1011

Phone: LOgan 7-5173

411 East Meridian
Dade City, Florida

Compliments

of

HARDY'S DEPARTMENT STORE

Shoes and Clothing For the Entire Family

"We Sell To Sell Again."

Dade City

Florida

Compliments of

PASCO FARM AND RANCH SUPPLY

Highway 301 North

Dade City, Florida

PITTMAN'S

Meats Fish
Groceries Produce

Phone LOgan 7-2675

902 North 7th Street

Dade City, Florida





<p>Compliments of</p> <p>TAMPA ELECTRIC COMPANY</p> <p>Pasco County Division</p> <p>Dade City Florida</p>	
<p>Compliments of</p> <p>KWIK CHEK</p> <p>STORE</p>	<p>PASCO GAS AND APPLIANCE</p> <p>511 East Church Avenue</p> <p>Phone LOgan 7-2485</p> <p>Pyrofax Gas Distributor</p>
<p>Compliments of</p> <p>DADE CITY LUMBER COMPANY</p> <p>902 Pasco Avenue</p> <p>Phone LOgan 7-3505</p> <p>P. O. Box 217</p> <p>Dade City Florida</p>	<p>Compliments of</p> <p>CENTRAL TRUCK LINES</p> <p>H. B. Worthington</p> <p>Terminal Manager</p>
<p>Shop and Save at</p> <p>WESTERN AUTO</p> <p>ASSOCIATE STORE</p> <p>Home Owned and Operated by</p> <p>H. A. Freeman</p> <p>Opposite the Court House</p> <p>Dade City Florida</p>	

<p>DOVIE'S LADIES READY-TO WEAR</p> <p>207 South 7th Street</p> <p>Nationally Known Brands</p> <p>Sizes 5-42 and 12 1/2 - 24 1/2</p> <p>Lingerie and Accessories</p> <p>Gifts for all Occasions Jewelry by Pandora of Florida</p> <p>Phone LOgan 7-3798</p> <p>EXCLUSIVE BUT NOT EXPENSIVE</p>	
<p>The Best of Medium</p> <p>in Pasco County</p> <p>509 E. Meridian Avenue</p> <p>Dade City, Florida</p> <p>Phone LOgan 7-3370</p>	<p>Compliments of</p> <p>MYRON NABER'S</p> <p>JEWELRY STORE</p> <p>Dade City</p>
<p>KIEFER'S PHARMACY</p> <p>"Where Pharmacy is an</p> <p>Art and a Science"</p> <p>201 South 7th Street</p> <p>Dade City Florida</p>	<p>Compliments of</p> <p>DADE CITY</p> <p>COCA COLA</p> <p>BOTTLING COMPANY</p>
<p>Compliments of</p> <p>DADE CITY FORD</p> <p>SALES AND SERVICE, INC.</p> <p>Phone LOgan 7-3063</p> <p>Dade City Florida</p>	



JERNIGAN & BROWN USED CARS

See Jernigan and Brown
For The Best Deal In Town

Phone LOgan 7-3189

Compliments of
MADILL'S FURNITURE STORE

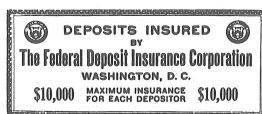
Phone LOgan 7-3467

Dade City Florida

Compliments of

THE BANK OF PASCO COUNTY

Established 1889



Dade City

Florida

MAYS' SERVICE SHOP

Headquarters for
Portable Radios and
Record Players
Hi-Fi or T.V.

409 East Meridian Avenue
Dade City Florida

MYERS METAL SHOP

Oxy-Acetylene & Electric Welding
Sheet Metal
and
Machine Shop Work
304 N. 10th Street
Phone LOgan 7-3169

Dade City Florida

Compliments of
BONITA FLOWER SHOP

Complete Floral Service

Dade City Florida

Compliments of

CARTER'S JEWELERS

Dade City Florida

Compliments of

SLOUGH GROVE

Office Belk Lindsey Bldg.

Dade City

Florida

Compliments of

WILLIAM'S DEPT. STORE

DADE CITY'S FASHION CENTER

Compliments of
PASCO LUMBER COMPANY

Phone LOgan 7-3567
305 South 8th Street


Dade City Florida

Compliments of
DADE CITY SHOE

and
BICYCLE SHOP

Dade City Florida



<p>Compliments of MODERN CLEANERS Phone LOgan 7-2362 216 South 8th Street Dade City Florida</p>	<p>TOUGHTON DRUGS COMPANY Complete Drug Service Luncheonette Cosmetics - Sundries Dial LOgan 7-2464 7th St. & Meridian Avenue Dade City Florida</p>
<p>Congratulations and Best Wishes G. & W. GROCERY 539 N. 7th Street Dade City Florida</p>	<p>Compliments of SUMNERS RADIATOR SHOP 301 North Dade City Florida</p>
<p>RUSSELL'S Dining Room and Curb Service STUDENTS WELCOME</p>	<p>CHAPMAN'S TRUCK SERVICE 301 Hi-Way North Dade City, Florida Phone LOgan 7-9906</p>
<p>ADAMS IGA STORE Fine Foods 106 South 8th  Dade City Phone LOgan 7-3466</p>	

<p>McCLUNG'S 5¢-\$1.00 STORE Pasco County's Newest and Most Modern Dade City Variety Store Florida</p>	
<p>RAMSEY'S SERVICE STATION Gulf Products 202 S. 7th Street Phone LOgan 7-2764 Dade City Florida</p>	<p>Best Wishes From RODDY WOODCOCK Authorized Hamilton Dealer Dade City Florida</p>
<p>Compliments of DR. H. H. FENNELL</p>	<p>Compliments of N. S. BURNS & SON REALTORS Real Estate Insurance Mtg. Loans 212 South 7th St. Dade City Phone LOgan 7-5121</p>
<p>Compliments of WIRT'S FURNITURE</p>	<p>HILLTOP DRIVE IN Hamburgers Fried in Butter Sealtest Ice Cream Dade City Florida Phone LOgan 7-3167</p>





Compliments of
DORMAN ELECTRIC COMPANY
506 South 7th Street
Phone L Ogan 7-3572

Dade City Florida

Compliments of
TREIBER'S HARDWARE
412 East Pasco Avenue
Phone L Ogan 7-2266

Dade City Florida

CROY'S JEWELERS

214 South 7th Street
Phone L Ogan 7-2378

Dade City Florida

CONGRATULATIONS
and
BEST OF LUCK

SERVICE DRUG STORE

E. J. "Reds" NOLEN

L & L SUPER MARKET

YOUR ONE STOP STORE
Groceries - Meats - Produce
444 North 7th Street

Dade City Florida

Myers
YEARBOOKS
in depth