

# THE PIRATE

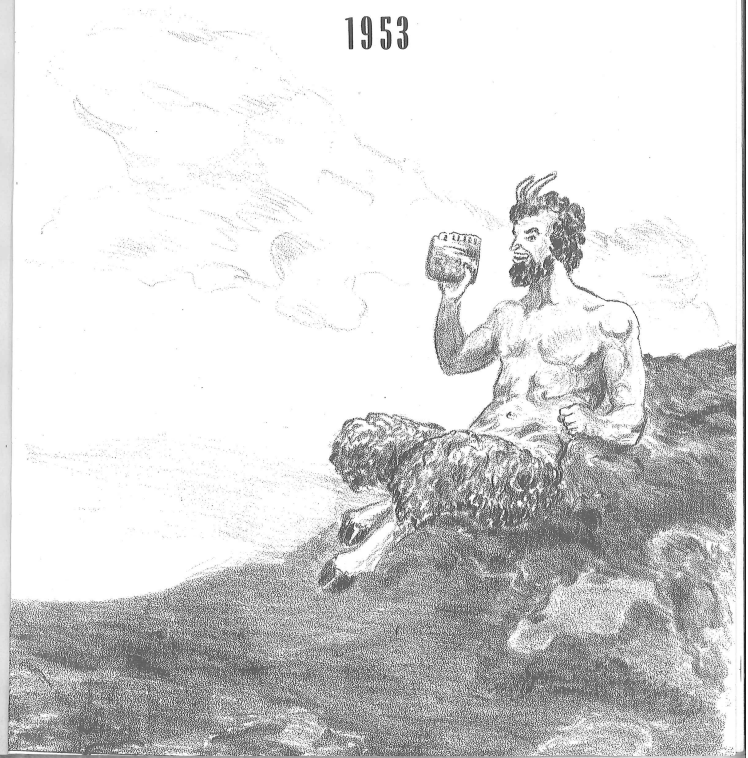
1953



# THE PIRATE

Presented by  
THE SENIOR CLASS  
PASCO HIGH SCHOOL  
Dade City, Florida

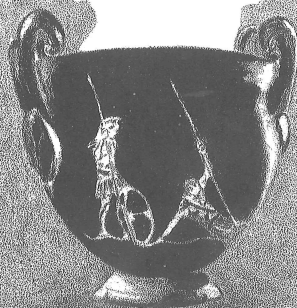
1953



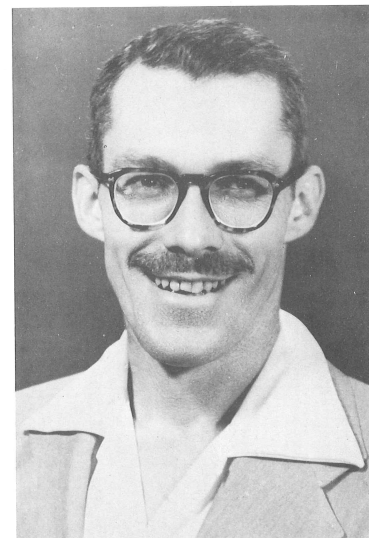


## TABLE OF CONTENTS

Faculty . . . . .	4
Principal's Page . . . . .	6
Seniors . . . . .	7
Juniors . . . . .	24
Sophomores . . . . .	30
Freshmen . . . . .	33
Eight Grade . . . . .	36
Laurels . . . . .	39
Activities . . . . .	53
Athletics . . . . .	63
Advertisements . . . . .	75



## DEDICATION



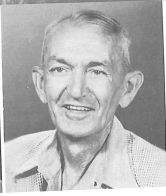
Of all the members of the Pasco High faculty whose influence upon us will be lasting, one is especially outstanding. His opinions, his patience in helping us with our problems, and his willingness to recognize us as individuals-these will always be a source of inspiration to us.

It is with sincere pride and deep appreciation for all that he has done, that we, the Seniors of '53 dedicate this Pirate to our sponsor, Mr. Albert E. Smith.

# THE FACULTY



BARBARA CAMP  
Secretary



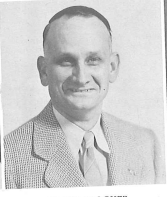
DAVE KAUFFMAN  
Custodian



MARTHA ALLEN  
B. S. Fla. Southern



JIM BAYNES  
B. S. Ohio St.



FRANK BLOCKER  
B. A. U. of Fla.



RUTH BRADY  
B. S. Stetson



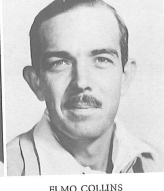
JEWELL BREWTON  
B. A. Fla. Southern



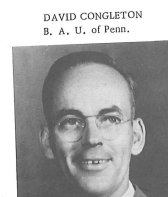
ROBERT BROWN  
B. S. U. of F.



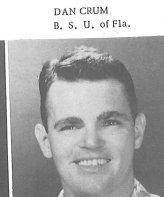
MILDRED BYRD  
B. S. Ind. St. Teach. Col.



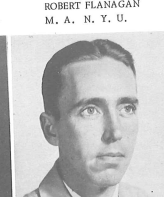
ELMO COLLINS  
M. A. U. of Fla.



DAVID CONGLETON  
B. A. U. of Penn.



DAN CRUM  
B. S. U. of Fla.



ROBERT FLANAGAN  
M. A. N. Y. U.



ELIZABETH HALE  
B. S. Columbia U.



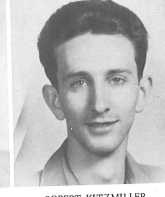
MARY HORNBUCKLE  
U. of F.



VIRGINIA JAMES  
B. S. Fla. State



GARY JORDAN  
B. S. Fla. Southern



ROBERT KITZMILLER  
B. S. Shippensburg St.  
Teach. Col. Pa.



RUTH LEWIS  
M. A. Fla. Southern



BERTHA MCKILLIPS  
M. A. Fla. Southern



VETA NEAL  
B. A. Fla. Southern



W. D. PALMER  
A. B. Rollins



WILMA PEDEN  
B. S. Fla. Southern



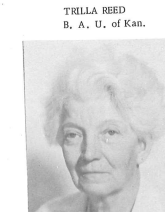
NINA PERCIVAL  
B. S. Fla. Southern



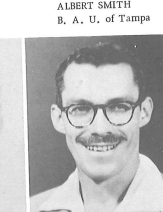
JACK PILSBURY  
B. S. Fla. Southern



LOUISE PILSBURY  
B. S. U. of Tampa



TRILLA REED  
B. A. U. of Kan.



ALBERT SMITH  
B. A. U. of Tampa



W. F. SULLIVAN  
M. Ed. Boston U.



MARY WEYHER  
A. B. Fla. Southern



#### PRINCIPAL'S MESSAGE

When one looks forward to an event to take place four years later, the image of that event is usually quite hazy. This is especially true when the high school freshman contemplates graduation after pursuing a course of study prescribed by educational authorities and advised by members of the high school staff.

As seniors, we look back upon a succession of experiences-many quite pleasant, some unpleasant. These experiences have changed us in many ways. They have led us out of a stage of bewilderment and awe to an attitude of inquisitiveness, of search, and of understanding. Looking backward, the years seem much shorter. Faces and events pass in review, some never to be seen or experienced again. All will have a more-or-less profound influence upon our lives.

It is the sincere wish of your principal that these years of study at Pasco High School may have prepared you to meet successfully the ever-mounting number of problems that are sure to rise up and face you in the future. Never be discouraged, however rough the going may be. There will be occasions of great joy to offset those of less promise. Determination, devotion to duty, and faith in the Supreme Being will enable you to achieve success in your chosen vocation and in dealing with your associates in various walks of life.

Yours for success and happiness,

*W. Bandy*

PRINCIPAL

# SENIORS

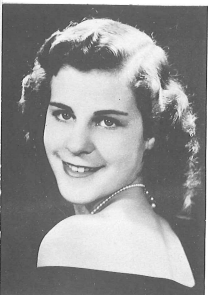




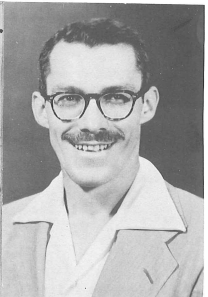
## SENIOR CLASS OFFICERS



STANLEY SMITH  
President



MARY WILSON  
Secretary



MR. SMITH  
Sponsor

CAROLYN TAIT  
Vice-President



BARBARA LEE  
Treasurer



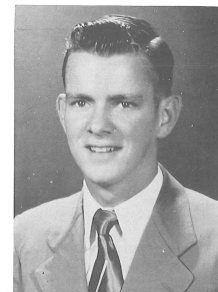
## CLASS HISTORY

As green as any freshmen could be, we entered high school in September 1949. After meeting our principal, Mr. Cornelius, we were assigned to our homeroom teachers: Miss Lewis, Mr. Kennedy, and Mr. Hurn. During the first of the year we elected our officers: President, Joe Geiger; Vice-president, James Valentine; Secretary-treasurer, Joy Dew. The rest of the year was devoted to getting acquainted with high school and the other students.

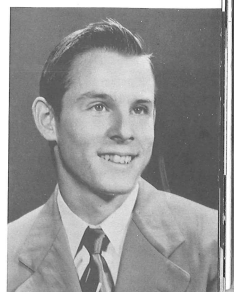
Our sophomore year arrived, but we were prepared this time. Our homeroom teachers were: Mrs. McKillips, Mr. Blocker, and Mr. Parton. Our elections resulted in the following choices: President, George Council; Vice-president, Peter Nikolai; Secretary-treasurer, Dickie Barber. This was the year in which a few of us had the honor of serving at the Junior-Senior Banquet.

We had the usual change of homeroom teachers at the beginning of our junior year: Mr. and Mrs. Pillsbury and Miss Greene. Our class officers this year were: President, Dickie Barber; Vice-president, George Council; Secretary-treasurer, Carolyn Tait. We sponsored the Sadie Hawkins dance, and from the money made on this project and the operetta, we entertained the seniors at a banquet. Our senior year saw some changes. First was the loss of Mr. Cornelius. However we were very fortunate in having Mr. O. S. Bandy come as our principal. He has made our work with him on our senior year a distinct pleasure, and we feel that Pasco High will benefit from his efforts in the future. Our class officers this year were: President, Stanley Smith; Vice-president, Carolyn Tait; Secretary, Mary Wilson; and Treasurer, Barbara Lee. Mr. Smith was our sponsor. Another change was the designation of our first period class as home room. At long last our class rings arrived; they symbolised a final year in Pasco High. Our privileges were freedom for the first day of hunting season, use of the homerooms and halls during the morning and lunchtime, Kid's Day, Skip Day, and the exemption from final exams of students with an A average.

FRED ARMSTRONG



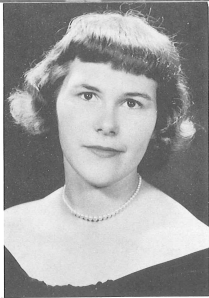
LEE ASHBROOK



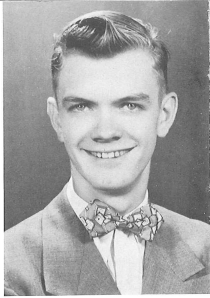
FRED ARMSTRONG . . . "A manner so quiet, a brain so fine, a better man is hard to find," Beta Club 3, pres. 4, Key Club 4, F. F. A. 1.  
LEE ASHBROOK . . . "Where there is a will, there is a way, Student Council Rep. 4.



EMMA ATWATER



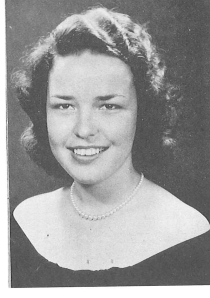
RUTH BANNWARTH



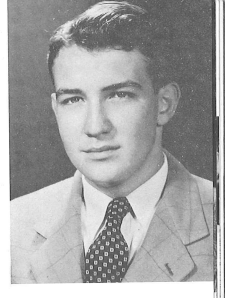
DICK BARBER



MOREEN BEST



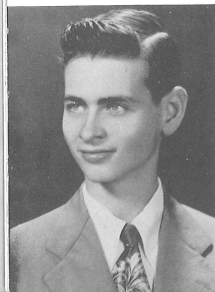
BARBARA JO BETTIS



JEFF BLITCH

EMMA ATWATER . . . "Industrious and courteous, liked by all!" F.H.A. treas. 1,3, pres. 2,4, Garden Club 2, Library Club 2, Banquet Waitress 2, Annual Staff 4, Newspaper reporter 4, RUTH BANNWARTH . . . "Pleasant is she and full of good intent." Trans. from High Floral Park, New York, F.H.A. 2, vice-pres. 3, treas. 4, Music Appre. 4, Glee Club 3, Operetta 3, DICK BARBER . . . "Really enjoys life as it is." Class Sec. 2, Class pres. 3, Key 3,4, Art Club 2, Student Council Rep. 4, Reporter 4, Band 1,2,3,4, Notable 3, Publicity Club 3, pres. 4, Operetta 3, Banquet Waiter 2, Annual Staff 3, Glee Club 3,4, WENDELL BARFIELD . . . "He seldom lets opportunity slip by him." Radio Club 2,3,4, Beta Club 2,3,4, Student Council Rep. 2,3, Banquet Waiter 2, Publicity Club 4, Annual Editor 4, Operetta 3, Camera Club 2, RUTH BELLAMY . . . "She walks in constant sunshine." Class reporter 3, F.H.A. 1, Glee Club 2,3,4, Operetta 2,3, DALE BENTKOWSKI . . . "Another like him would be hard to find." Football 1,2,3,4, F.F.A. 1.

MOREEN BEST . . . "Laugh and the world will laugh with you, frown and you wrinkle your face." Trans. from Kinston, Ala. BARBARA JO BETTIS . . . "Always smiling and agreeable." JEFF BLITCH . . . "A swell boy with a flair for sports." Football 4, F.F.A. 1,2,4, Art Club 1,2, WAYNE BOND . . . "Why worry, that's what the teachers are paid to do." HORACE BOYD . . . "Endurance is his crowning glory." F.F.A. 2, Football 4, Track 3, Basketball 3, EDWARD BOYETTE . . . "Ask me no questions and I'll tell you no lies." Student Council vice-pres. 4, F.F.A. 2, Key Club 4, Beta Club 4, Publicity Club 4, Banquet Waiter 2, Banquet M.C. 3.



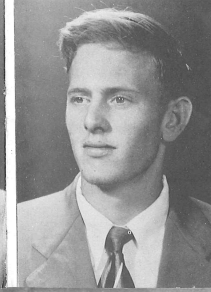
WENDELL BARFIELD



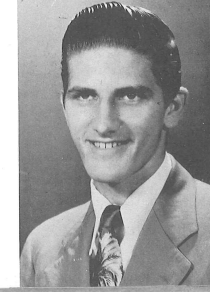
RUTH BELLAMY



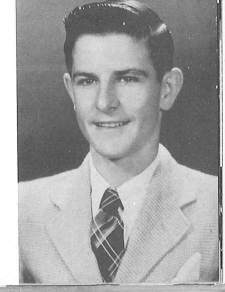
DALE BENTKOWSKI



WAYNE BOND



HORACE BOYD



EDWARD BOYETTE



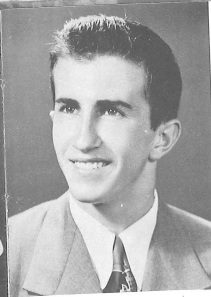
JEAN BRINSON



ELEANOR BROMLEY



JANE CAMP



GEORGE COUNCIL



DOROTHY CRAPPS



LILLIAN DARMANIN

JEAN BRINSON . . . "It's not always the noisy one who makes the truest friend." F.H.A. 1, 2, 3, 4, Glee Club 4, Publicity Club 4, Garden Club 2. ELEANOR BROMLEY . . . "A friendly smile for everyone." JANE CAMP . . . "It's nice to be so carefree." F.H.A. 1, Glee Club 1, 4, Publicity Club 3, 4, Dramatics Club 2, vice-pres., Cheerleader 3, 4. MARY ELLEN CARPENTER . . . "A smile is a trademark of a happy soul." F.H.A. 1, 2, 3, 4. SHIRLEY JEAN CARPENTER . . . "The girl who wins is the girl who works." F.H.A. 1, 2, song leader 3, Garden Club 2, 3. CLIFFORD COUEY . . . "He's a man after his own heart."

GEORGE COUNCIL . . . "He's little but he's wise, he's a terror for his size." Student Council 1, Class pres. 2, vice pres. 3, Football 1, 3, 4, Track 2, 3, 4, Notable 3, Court 3, Key Club 2, 3, 4, Banquet Walter 2. DOROTHY CRAPPS . . . "Ah for her life of a senior." Trans. from Jacksonville, Fla. LILLIAN DARMANIN . . . "A welcome addition to our class." Trans. from Bronx, New York. JOY DEW . . . "A mind full of knowledge is a mind that never fails." Class sec. 1, Beta Club 2, treas. 3, sec. -treas. 4, F.H.A. 1, 2, 4-H 1, 2, 3, pres. 4, Student Council sec. -treas. 3, Banquet Waitress 2, Notable 3, Band 1, 2, 3, 4, Operetta 3. IRMA JEAN DEWEY . . . "There's much behind a few words." F.H.A. 1, 2. SHIRLEE DeWITT . . . "It's a wise head that makes a still tongue." Dancing Club 2.



MARY ELLEN CARPENTER



SHIRLEY JEAN CARPENTER



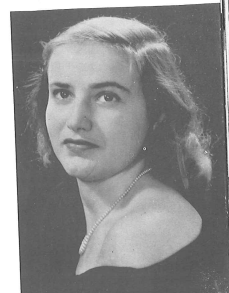
CLIFFORD COUEY



JOY DEW



IRMA JEAN DEWEY



SHIRLEE DeWITT





JO CLAIR EDWARDS



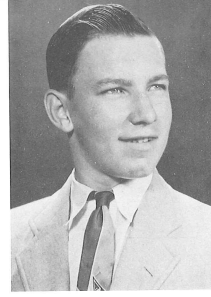
MARIE FENNELL



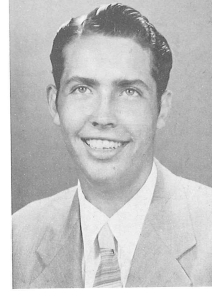
CARL GASKIN



MILDRED HAYMAN



CHARLES HELMS



JAMES HERNDON

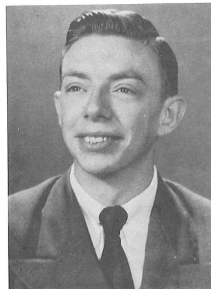
-JO CLAIR EDWARDS . . . "A bad excuse is better than none at all." Trans. from Raleigh, North Carolina. MARIE FENNELL . . . "Not very tall, in fact small, her good nature is liked by all." 4-H Club 3,4. CARL GASKIN . . . "A closed mouth catches no flies." Camera Club 1. JOE GEIGER . . . "Oh, it is excellent to have a giant's strength." Class pres. 1. Beta Club 2,3,4. Key Club 2, sec. 3, pres. 4. Letterman's Club sec. 3,4. Publicity Club 4. Tumbling Club 2. Art Club 2. Annual Staff 2,3,4. Banquet Waiter 2. Student Council Rep. 1. Notable 3. Operetta 2,3. Football 1,2,3,4. Track 3. THURMAN HANCOCK . . . "Great men are not always wise." F.F.A. 1,3,4. BETTY JO HARRIS . . . "Pretty eyes, pep, and friendliness." Operetta 3.

MILDRED HAYMAN . . . "A quiet tongue shows a wise head." Glee Club 2,3. F.H.A. 1, treas. 2. CHARLES HELMS . . . "I dare do all that may become a man." Basketball 2,3,4. Football 2,3,4. 4-H Club 1. JAMES HERNDON . . . "Don't worry, it won't last, nothing does." Football 4. JOAN HICKS . . . "In her quietness there is charm." Beta Club 2,3,4. F.H.A. 1,2,3. Music Club 2,3. Annual Staff 4. Garden Club 1. History Club 2. Library Club 2. Banquet Waitress 2. KARLYN HOOVER . . . "A quiet outsp." Football 4. MELBA JEAN IRVIN "A gal that's loads of fun." F.H.A. 1,2. Dramatic Club 2. Annual Staff 4. Band 4.

JOE GEIGER



THURMAN HANCOCK



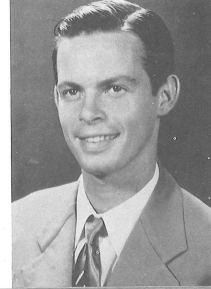
BETTY JO HARRIS



JOAN HICKS



KARLYN HOOVER



MELBA JEAN IRVIN





CELIA IRWIN



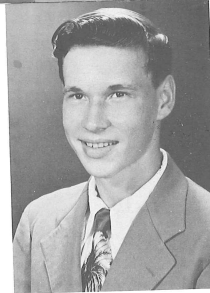
FRANCES JETER



GRETHER JOHNS



JEWEL LAY



CLAUDE LEASURE



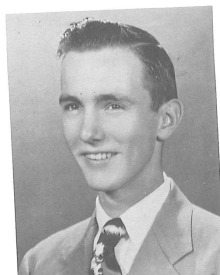
BARBARA LEE

CELIA IRWIN . . . "She never fails to speak a pleasant word." Music Appre. Club 1, F.H.A. 1, Glee Club 1, Banquet Waitress 2, 4-H Club 3. FRANCES JETER . . . "It's nice to be natural if you're naturally nice." Majorette 3, 4. Banquet Waitress 2, Publicity Club 4, Glee Club 2, Operetta 2, 3, F.H.A. 2, Library Club 2, Basketball 2, 3. GRETHER JOHNS . . . "Whatever is worth doing at all is worth doing well." F.H.A. 1, 2, pres. 3, Beta Club 2, 3, Vice-pres. 4, Music Club 3, Banquet Waitress 2, Band 3, 4. Student Council Rep. 4, Annual Staff 4, Operetta 3, Library Club 2. PAT KING . . . "Big Blue eyes and pleasant smile, you are certainly Miss Worth While." Red and Black Staff 1, 2, History Club 2, Publicity Club 3, sec.-treas. 4, Music Club 3, sec.-treas. 4, Operetta 3, Basketball 2, 3, 4, Softball Co Captain 3, 4, Asst. Annual Editor 4, Spanish Club 4. GLENN KIRKLAND . . . "He keeps the night oil burning but not always studying." F.F.A. 1, 2, 3, 4, Band 1, 2, Operetta 3. CURTIS LAW . . . "He acts bashful, but we have our doubts." Football 2, 3, 4, Baseball 2, 3, 4, Key Club 2, 3, 4.

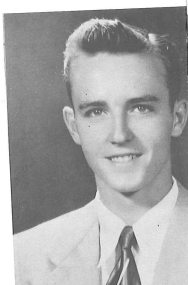
JEWEL LAY . . . "A man most fair and square." F.F.A. 1, 2, 3, CLAUDE LEASURE . . . "He has just enough sense and nonsense to make him a nice boy." BARBARA LEE . . . "This gal has her future planned and think that it includes a man." Band 2, 3, 4, Student Council Rep. 3, 4, Cheerleader 1, Sec. of Class 2, Treas. 4, Beta Club 3, 4, Library 2, Banquet Waitress 2, Homecoming Queen 4. JOE LEHEUP . . . "Another like him would be hard to find." Football 1, 2, F.F.A. 1, 2, Home Room pres. 4, JOHN LUTZ . . . "I never trouble trouble till trouble troubles me." History Club 1, Projectionist Instructor 4. JOHN McLAUGHLIN . . . "He speaketh not, and yet there lies a conversation in his eyes." Trans. from Plant City, Football 3, Baseball 3, Letterman's Association 4.



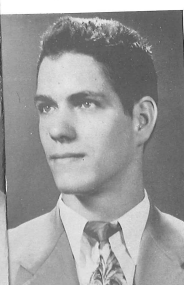
PAT KING



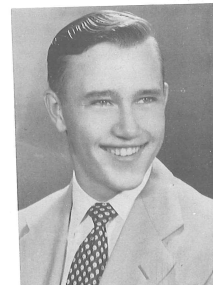
GLENN KIRKLAND



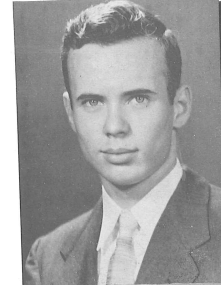
CURTIS LAW



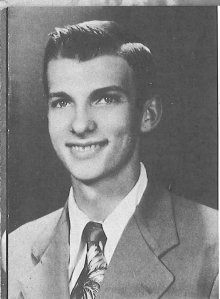
JOE LEHEUP



JOHN LUTZ



JOHN McLAUGHLIN



MAX McLEOD



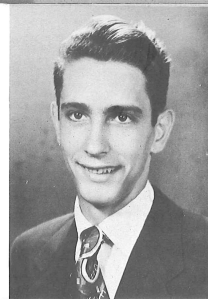
EDITH McNATT



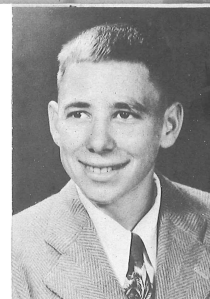
BETTY LOU MILLS



ROBERT NATHE



STEPHEN NATHE



PETER NIKOLAI

MAX McLEOD . . . "Let the world roll on." Band 3, F.F.A. 1, 2, Student Council 2. EDITH McNATT . . . "Like a circle ending never, does her tongue go on forever." F.H.A. 1, 2, Music Appre. 2, 3, 4, Publicity Club 3, 4, History Club 2, Band 1, 2, 3, 4, Basketball 1, 2, 3, 4, Operetta 3, Glee Club 1, Annual Staff 4. BETTY LOU MILLS . . . "A light heart lives long." F.H.A. 1, Glee Club 1, 2, Publicity Club 3, 4, Basketball 1, 2, 3, 4, Cheerleader 3, 4. MARY MIMS . . . "Once your friend always your friend." F.H.A. 2, 3, 4, Garden Club 1, Basketball 1. HELEN MOORE . . . "Quiet, reserved, but sincerely friendly." Class Reporter 1, Banquet Waitress 2, History Club 2, Glee Club 2, Operetta 3. NORMA MORGAN . . . "She has a personality all her own." Basketball 1.

ROBERT NATHE . . . "A handy man to have around the school." F.F.A. 1, 2, 3, 4, Tumbling Club 1. STEPHEN NATHE "With the argument over he'd argue still." F.F.A. 1, 2, 3, 4, Publicity Club 4, Pres. Student Council 4, Senior Class Parliamentarian, Banquet Waiter 2. PETER NIKOLAI "Silence is golden, but who am I to make money?" Band 1, 2, 3, Key Club 3, 4, Football 4, Vice-President 2. MARIE PARKER . . . "Mild and Unassuming." Music Club 1. DAVID PATTERSON . . . "Men of few words are the best of men." JOYCE PAYNE . . . "There must always be a joker in the deck." F.H.A. 2, Publicity Club 4, Glee Club 1, 2, Music Club 3, Dancing Club 3, Operetta 2, 3, Band 4.



MARY MIMS



HELEN MOORE



NORMA MORGAN



MARIE PARKER



DAVID PATTERSON

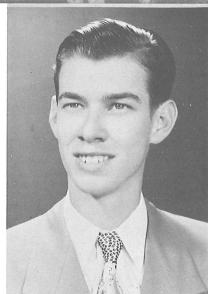


JOYCE PAYNE

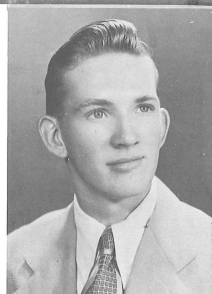




GORDON PETERSON



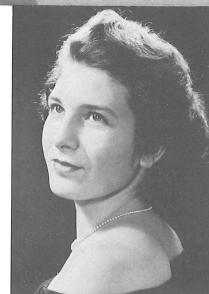
LAYTON PHILMON



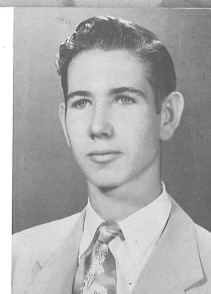
GEORGE PORTER



BILLY ROLLINS



MARY SASSAMAN



STANLEY SMITH

GORDON PETERSON . . . "Always eager to do something for someone." LAYTON PHILMON . . . "Well, Here I am girls." F.F.A. 2,3, Camp 3, Dancing Club 2, GEORGE PORTER . . . "His smile goes all the way around and buttons in the back." F.F.A. 3,4. CHARLOTTE PUGH . . . "More fun than a barrel of monkeys." Cheerleader 1,3,4, Library Club Treas. 2, Publicity Club 3,4, Dancing Club 2, Annual Staff 4, Beta Club 3,4, Student Council Rep. 3, Jr. Court, Banquet Waitress 2, Music Appre. 2, JOE QUICK . . . "I never dare to be as funny as I am." Football 1,2, Asst. Mgr. 3, Mgr. 4, Radio Club 1,2,3,4, Key Club 2,3,4, Operetta 3, MARY RICKETTS . . . "Kills time, but never works it to death." Publicity Club 3,4, Basketball 1,2,3, Notable 3, Cheerleader 3,4.

BILLY ROLLINS . . . "You can't help liking Billy." F.F.A. 1, 2,3,4, Student Council Parliamentarian 4, MARY SASSAMAN . . . "She has taken up potato and knife to spend her future as someone's wife." Trans. from Tampa, Fla., Glee Club 1, STANLEY SMITH . . . "He'll make good at what ever he tries." Baseball 1,2,3,4, F.F.A. 1, Band 1,2,3,4, Letterman's Club 3,4, Key Club 3,4, Publicity Club 4, Boys' State Rep. 3, Banquet Waiter 2, Operetta 3,4, Glee Club 3, Senior Class pres. 4, Dancing Club 2, RONALD SMITH . . . "Large is his bounty and his soul sincere." Camera Club 1,2, Radio Club 3,4, Basketball 3,4, Baseball 3,4, Band 1,2,3,4, MARTHA STRICKLAND . . . "Life, What art thou without love." Basketball 1,2,3,4, CAROLYN TAIT . . . "Unaffected and sincere." Class treas. 3, Vice pres. 4, Girls' State Rep. 3, Banquet Waitress 2, Basketball 1, F.H.A. vice pres. 1, Beta Club 3,4, Reporter 4, Student Council Rep. 1.

CHARLOTTE PUGH

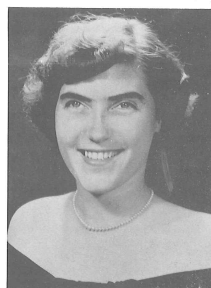
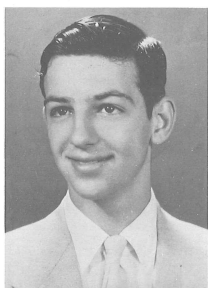
JOE QUICK

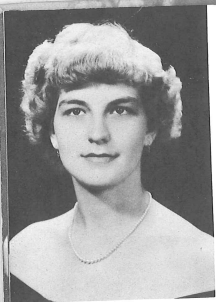
MARY RICKETTS

RONALD SMITH

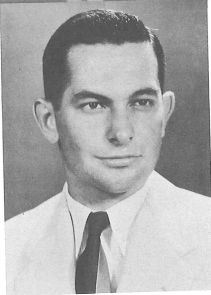
MARTHA STRICKLAND

CAROLYN TAIT





BENA TROWELL



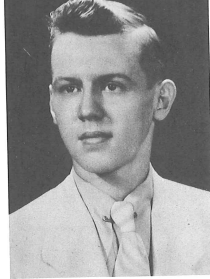
JAMES VALENTINE



ROBERT A. WARD



FRANCES WILLIAMS



ARTHUR WILLIAMSEN



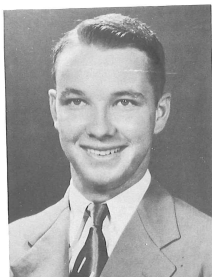
MARY WILSON

BENA TROWELL . . . "This girl will never have to worry about peroxide." F. H. A. 1, 2, History Club 2, Operetta 3. JAMES VALENTINE . . . "Work has killed many a man-why die." Football 2, 3, 4, Baseball 2, 3, 4, Letterman's Club 3, 4. ROBERT A. WARD . . . "Always willing, always ready, the kind that is true blue." Girls' Softball 3, Library Club 2, Publicity Club 4, Basketball 3, 4, 4-H 1, 2, Phys. Ed. Asst. Coach. INDIA WARREN . . . "If she can't find something to laugh about she'll just giggle." Library Club sec. 2, Publicity Club 4, Annual Staff 4, Dancing Club 2, Banquet Committee. GLEN WEAVER . . . "I would be than seem to be." TOM WEIGHTMAN . . . "A young man that blushes is better than one who turns pale." Track 2, 3, 4, Baseball 1, 2, 3, 4, Basketball 1, 2, 3, 4, Football 1, 2, 3, 4, Operetta 3, Student Council 1, 2, Key Club 2, 3, 4, Letterman's Club 3, 4, Publicity Club 3, 4.

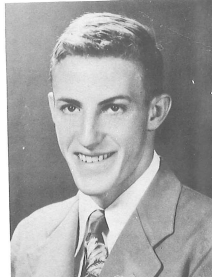
FRANCES WILLIAMS . . . "Ohh! Those dreamy eyes." Library Club 2, Music Club 3, Glee Club 1, 2, F. H. A. 1. ARTHUR WILLIAMSEN . . . "Silence helpeth in a crowd." Baseball 3, Operetta 3. MARY WILSON . . . "Her manner is as winning as her smile." Publicity Club 4, Music Club 3, Dramatic Club 3, Operetta 3, Sec. Class 4, Band 2, 3, Head Majorette 4, Homecoming Attendant 2, 3, 4, Notable 3, Jr. Court 3, Miss Pasco High 3, Cheerleader 1. MARY SUE WILSON . . . "Good nature plus good sense has won her a host of friends." Trans. from Frostproof, F. H. A. 2, 3, Operetta 3. ARTHUR YATES . . . "Good nature is the way to all our hearts." Glee Club 3, 4, Operetta 3. LORETTA YEATES . . . "Fun is relished by the best of us." Glee Club 4, F. H. A. 1.



INDIA WARREN



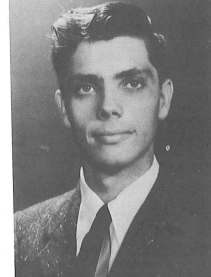
GLEN WEAVER



TOM WEIGHTMAN



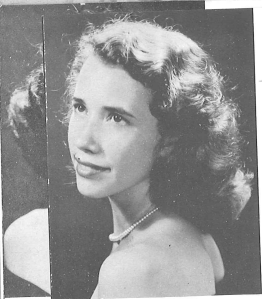
MARY SUE WILSON



ARTHUR YATES



LORETTA YEATES



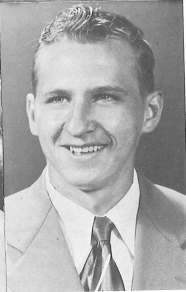
CELIA IRWIN



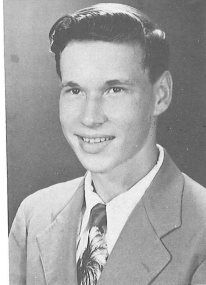
FRANCES JETER



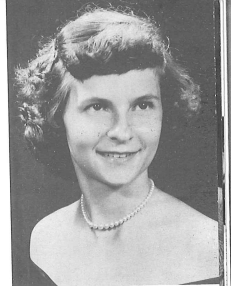
GRETHER JOHNS



JEWEL LAY



CLAUDE LEASURE



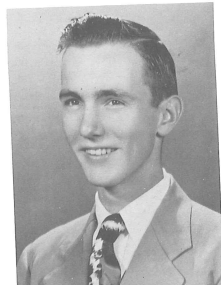
BARBARA LEE

CELIA IRWIN . . . "She never fails to speak a pleasant word." Music Appre. Club 1, F.H.A. 1, Glee Club 1, Banquet Waitress 2, 4-H Club 3. FRANCES JETER . . . "It's nice to be natural if you're naturally nice." Majorette 3, 4. Banquet Waitress 2, Publicity Club 4, Glee Club 2, Operetta 2, 3, F.H.A. 2, Library Club 2, Basketball 2, 3. GRETHER JOHNS . . . "Whatever is worth doing at all is worth doing well." F.H.A. 1, 2, pres. 3, Beta Club 2, 3, Vice-pres. 4, Music Club 3, Banquet Waitress 2, Band 3, 4, Student Council Rep. 4, Annual Staff 4, Operetta 3, Library Club 2. PAT KING . . . "Big Blue eyes and pleasant smile, you are certainly Miss Worth While." Red and Black Staff 1, 2, History Club 2, Publicity Club 3, sec.-treas. 4, Music Club 3, sec.-treas. 4, Operetta 3, Basketball 2, 3, 4, Softball Co Captain 3, 4, Asst. Annual Editor 4, Spanish Club 4. GLENN KIRKLAND . . . "He keeps the night oil burning but not always studying." F.F.A. 1, 2, 3, 4, Band 1, 2, Operetta 3. CURTIS LAW . . . "He acts bashful, but we have our doubts." Football 2, 3, 4, Baseball 2, 3, 4, Key Club 2, 3, 4.

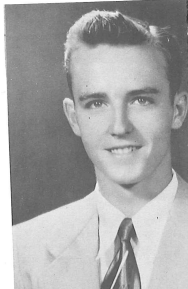
JEWEL LAY . . . "A man most fast and square." F.F.A. 1, 2, 3, CLAUDE LEASURE . . . "He has just enough sense and nonsense to make him a nice boy." BARBARA LEE . . . "This gal has her future planned and think that it includes a man." Band 2, 3, 4, Student Council Rep. 3, 4, Cheerleader 1, Sec. of Class 2, Treas. 4, Beta Club 3, 4, Library 2, Banquet Waitress 2, Homecoming Queen 4. JOE LEHEUP . . . "Another like him would be hard to find." Football 1, 2, F.F.A. 1, 2, Home Room pres. 4. JOHN LUTZ . . . "I never trouble trouble till trouble troubles me." History Club 1, Projectionist Instructor 4. JOHN McLAUGHLIN . . . "He speaketh not, and yet there lies a conversation in his eyes." Trans. from Plant City, Football 3, Baseball 3, Letterman's Association 4.



PAT KING



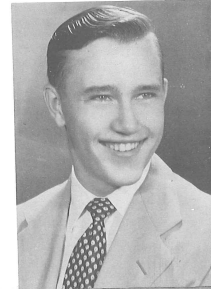
GLENN KIRKLAND



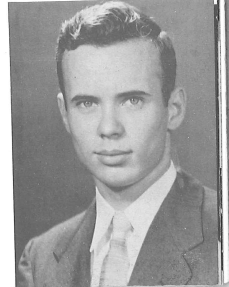
CURTIS LAW



JOE LEHEUP

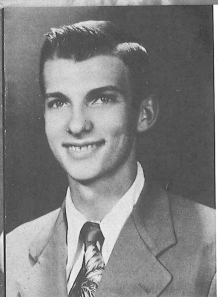


JOHN LUTZ



JOHN McLAUGHLIN





MAX McLEOD



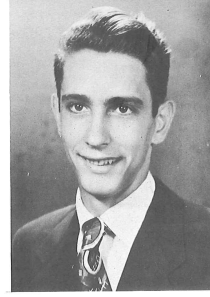
EDITH McNATT



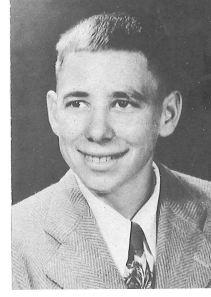
BETTY LOU MILLS



ROBERT NATHE



STEPHEN NATHE



PETER NIKOLAI

MAX McLEOD . . . "Let the world roll on." Band 3, F.F.A. 1, 2, Student Council 2. EDITH McNATT . . . "Like a circle ending never, does her tongue go on forever." F.H.A. 1, 2, Music Appre. 2, 3, 4, Publicity Club 3, 4, History Club 2, Band 1, 2, 3, 4, Basketball 1, 2, 3, 4, Operetta 3, Glee Club 1, Annual Staff 4. BETTY LOU MILLS . . . "A right heart lives long." F.H.A. 1, Glee Club 1, 2, Publicity Club 3, 4, Basketball 1, 2, 3, 4, Cheerleader 3, 4. MARY MIMS . . . "Once your friend always your friend." F.H.A. 2, 3, 4, Garden Club 1, Basketball 1. HELEN MOORE . . . "Quiet, reserved, but sincerely friendly." Class Reporter 1, Banquet Waitress 2, History Club 2, Glee Club 2, Operetta 3. NORMA MORGAN . . . "She has a personality all her own." Basketball 1.

ROBERT NATHE . . . "A handy man to have around the school." F.F.A. 1, 2, 3, 4, Tumbling Club 1. STEPHEN NATHE "With the argument over he'd argue still." F.F.A. 1, 2, 3, 4, Publicity Club 4, Pres. Student Council 4, Senior Class Parliamentarian, Banquet Waiter 2. PETER NIKOLAI "Silence is golden, but who am I to make money?" Band 1, 2, 3, Key Club 3, 4, Football 4, Vice-President 2. MARIE PARKER . . . "Mild and Unassuming." Music Club 1. DAVID PATTERSON . . . "Men of few words are the best of men." JOYCE PAYNE . . . "There must always be a joker in the deck." F.H.A. 2, Publicity Club 4, Glee Club 1, 2, Music Club 3, Dancing Club 3, Operetta 2, 3, Band 4.

MARY MIMS



HELEN MOORE



NORMA MORGAN



MARIE PARKER

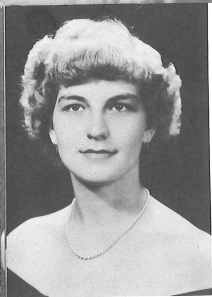


DAVID PATTERSON

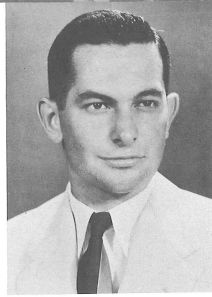


JOYCE PAYNE





BENA TROWELL



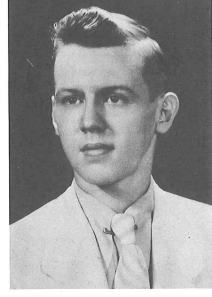
JAMES VALENTINE



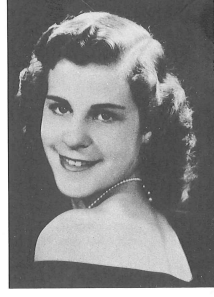
ROBERTA WARD



FRANCES WILLIAMS



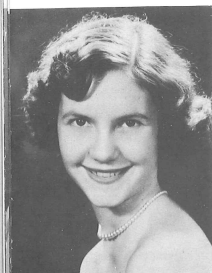
ARTHUR WILLIAMSEN



MARY WILSON

BENA TROWELL . . . "This girl will never have to worry about peroxide." F. H. A. 1, 2, History Club 2, Operetta 3. JAMES VALENTINE . . . "Work has killed many a man-why die." Football 2, 3, 4, Baseball 2, 3, 4, Letterman's Club 3, 4. ROBERTA WARD . . . "Always willing, always ready, the kind that is true blue." Girls' Softball 3, Library Club 2, Publicity Club 4, Basketball 3, 4, 4-H 1, 2, Phys. Ed. Asst. Coach. INDIA WARREN . . . "If she can't find something to laugh about she'll just giggle." Library Club sec. 2, Publicity Club 4, Annual Staff 4, Dancing Club 2, Banquet Committee. GLEN WEAVER . . . "I would be than seem to be." TOM WEIGHTMAN . . . "A young man that blushes is better than one who turns pale." Track 2, 3, 4, Baseball 1, 2, 3, 4, Basketball 1, 2, 3, 4, Football 1, 2, 3, 4, Operetta 3, Student Council 1, 2, Key Club 2, 3, 4, Letterman's Club 3, 4, Publicity Club 3, 4.

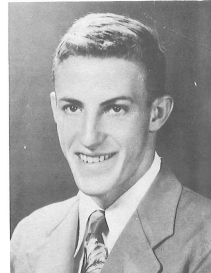
FRANCES WILLIAMS . . . "Ohh! Those dreamy eyes." Library Club 2, Music Club 3, Glee Club 1, 2, F. H. A. 1. ARTHUR WILLIAMSEN . . . "Silence helpeth in a crowd." Baseball 3, Operetta 3. MARY WILSON . . . "Her manner is as winning as her smile." Publicity Club 4, Music Club 3, Dramatic Club 3, Operetta 3, Sec. Class 4, Band 2, 3, Head Majorette 4, Homecoming Attendant 2, 3, 4, Notable 3, Jr. Court 3, Miss Pasco High 3, Cheerleader 1. MARY SUE WILSON . . . "Good nature plus good sense has won her a host of friends." Trans. from Frostproof, F. H. A. 2, 3, Operetta 3. ARTHUR YATES . . . "Good nature is the way to all our hearts." Glee Club 3, 4, Operetta 3. LORETTA YEATES . . . "Fun is relished by the best of us," Glee Club 4, F. H. A. 1.



INDIA WARREN



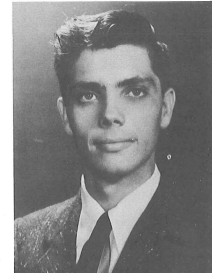
GLEN WEAVER



TOM WEIGHTMAN



MARY SUE WILSON

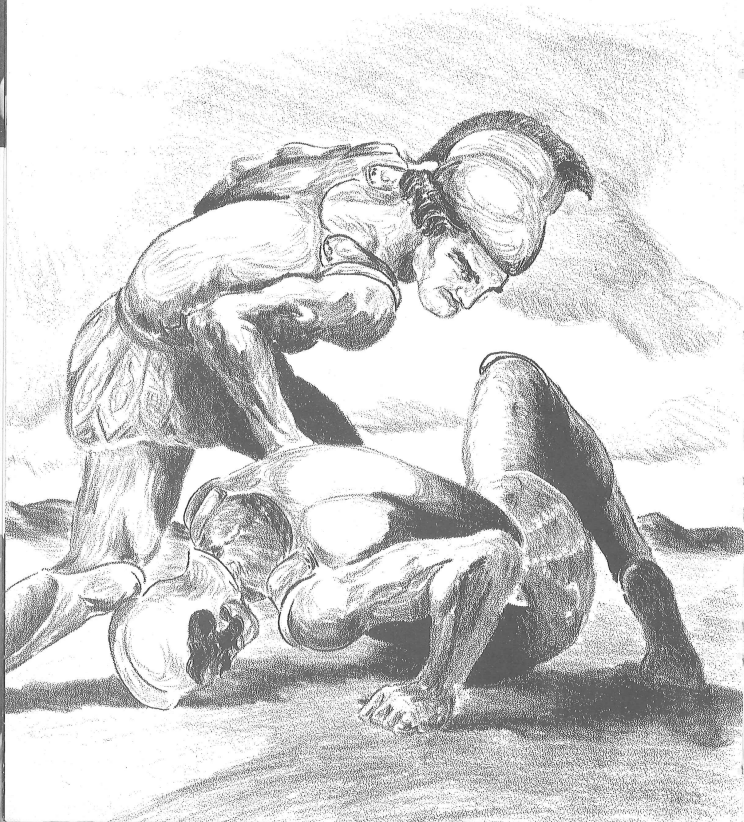


ARTHUR YATES



LORETTA YEATES

# JUNIORS



Ted Thomas  
President

John Geiger  
Vice-President



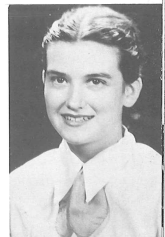
Nancy Luscomb  
Secretary



Mr. Palmer  
Sponsor



Barbara Bennett  
Treasurer



## JUNIOR CLASS OFFICERS



Marvin Adams  
Dewey Alford  
Barbara Armstrong  
Marilyn Armstrong



Jimmie Crews  
Mary Cross  
Ronnie Cusmano  
Marion Davenport

John Bamberger  
Marie Bamberger  
Dorothy Bauknight  
Barbara Bennett

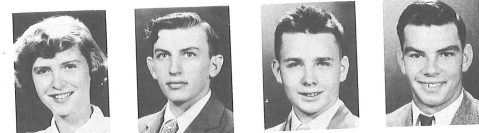


Loretta Day  
Jimmie Dowling  
Bobby Farr  
Frances Foster



Lavon Beverly  
Dickie Bolocanoff  
Henry Boyette  
Joyce Boyette

Rebecca Futch  
Ivan Galster  
John Geiger  
Arnold Godwin



Tommy Bradshaw  
C. J. Bridges  
Barbara Brock  
Faye Brooks

Colene Goodwin  
Shirley Green  
Judy Green  
Charles Gurey



Mary Burger  
Faye Byrd  
Joan Cable  
Mary Camp



Harold Harrison  
Billy Haycraft  
Bill Hemingway  
Marion Hemingway

Roger Carpenter  
Clifford Clark  
Betty Lou Clark  
Harvey Clinton



Montez Henderson  
Marie Hendry  
Patricia Herring  
Alton Higgins

Janice Hines  
Mary Jackson  
Billy Jamison  
David Johnson



Ruth Rogers  
Ronny Roseman  
Lottie Scarborough  
Lois Sessoms

Nancy Jones  
Althea Jones  
Lela Kemp  
Virgina Knight



Donald Shannon  
Margaret Sheffield  
Bobbie Sherwin  
Harvey Simpson



Jim Kozakoff  
Mary Lane  
Nancy Luscomb  
Jerry McNally



Sylvia Mathis  
Mildred Mercer  
Dot More  
Alan Naber

Hazel Sparkman  
Helen Sparkman  
Janet Sprigg  
Estelle Stewart



Jimmy Sumner  
Ted Thomas  
Douglas Tipton  
Johnny Watson



David Nathe  
Carolyn Nelson  
Bobby Nikolai  
James Nixon



Genevieve Weeks  
Loretta Werner  
Jimmy Wilder  
Freddy Willingham

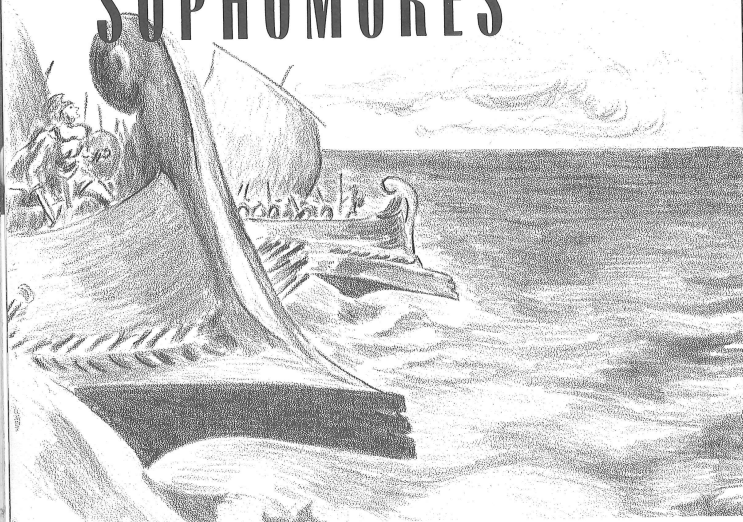
Laura Peacock  
Florell Polk  
Patsy Pruett  
Mary Rhodes



Arlene Wilson  
Lillie Wooten  
Sylvia Wright  
Sonny Young

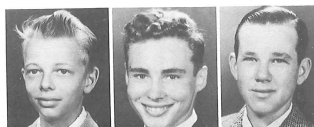


# SOPHOMORES



PAUL WUBBENA, President

Adams  
Anderson  
Anderton



Barry  
Bass  
Black  
Bowman  
Bronson  
Brown



Brown  
Burger  
Burney  
Burrowes  
Cain  
Cain

Carpenter  
Carter  
Coulter  
Council  
Crump  
Currie



Dew  
Duncan  
Eldridge  
Elkins  
Etheridge  
Fagan

Farmer  
Fudge  
Futch  
Gaskins  
Goodman



Goodwin  
Gregory  
Gurey  
Hauff  
Hawkins  
Helms

Helveston  
Hester  
Hicks  
Hobbs  
Hoover  
Hoover



Hoover  
How  
Huffstutler  
Hughes  
Hunnicut  
Johnson

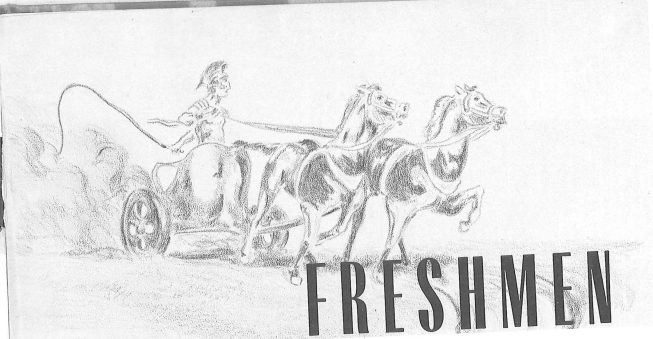


Johnson  
Jones  
Jones  
Knight  
Lawrence  
Lovette

McCullers  
McElveen  
McKendree  
Miller  
Mims  
Mosley



Mullins  
Northrup  
Odom  
Ogle  
Osborn  
Patterson



# FRESHMEN



Pittman  
Register  
Reppard  
Revels  
Riddle  
Rollins



Rowland  
Sabatelli  
Sasser  
Sawyer  
Scarborough  
Shearer



Marvin Hall  
president



Billy Agner  
vice president

Abrames  
Adams



Simmons  
Smith  
Stephens  
Stuart  
Stubbs



Sumner  
Sumner  
Thomas  
Tipton  
Townsend  
Tucker



Turner  
Waldorf  
Warren  
Weeks



Aughenbaugh  
Bandy  
Bass  
Bauknight  
Beck  
Bennett



Agner  
Agner  
Alvarez  
Andrews  
Armstrong  
Asbel



Bessenger  
Brantley  
Bridges  
Brinson  
Brock  
Bromley

Brooks  
Brown  
Bryant  
Buchanan  
Bucho  
Burger,  
Not Pictured



Johnson  
Kellett  
Lee  
Mahon  
Maloof  
Mathis



Bush  
Butler  
Campbell  
Cash  
Causey  
Cavin

Meek  
Mercer  
Miller  
Miner  
Morgan  
Naber



Cavin  
Champion  
Clark  
Clemons  
Clements  
Coker



Nathe  
Nathe  
Noris  
Overstreet  
Phillips



Cooper  
Cooper  
Coney  
Croft  
Curtin  
Dawson

Phillips  
Prater  
Pruett  
Ramsey  
Rice  
Ross



Day  
Dyal  
Dupree  
Edwards  
Ethers  
Etheridge



Sanders  
Scroggins  
Sessoms  
South  
Sprigg  
Staley



Fehlberg  
Fleming  
Giella  
Godwin  
Goodman  
Graham

Stamm  
Stanfield  
Stephens  
Straughn  
Sucarichi  
Sullivan



Grantham  
Hall  
Hall  
Hallman  
Hargraves  
Hayes



Sumner  
Taylor  
Thomas  
Touchton  
Trowell  
Tyner



Helveston  
Herring  
Heufel  
Hines  
Hormuth  
Johns

Whatley  
Whatley  
White  
Williams  
Williams  
Williams



## EIGHTH GRADE



FIRST ROW: Helen Gurey, Mary Ann Helms, Patty Helms, Mary Frances Farmer, Corine Stanberry, Joan Slater, Barbara Boyant, Annette McDuffie. SECOND ROW: Mr. Baynes, James Meyer, Harold Maddox, Nelson Jones, Merle Boyett, Kenneth Bailey, James Harris, Dennis Nutt, Wayne Mercer, Gary McCarty, Milton Hancock. THIRD ROW: Robert Messer, Paul Shockley, Fieda Duncan, June Thomas, Valera Skinner, Louise Smith, Carolyn Akins, Carolyn Rogers, Charles Bolton, Harold Bryant.

FIRST ROW: Cora Canida, Nina Jernigan, Gloria Baldwin, Martha Jackson, Dorothy Wright, Johnnie Mae Gaskin, Judith Lindsey, Ginger Russell. SECOND ROW: Earl Brannon, Bobbie Pearson, Tommy Bush, Louis Collura, Aaron Mitchell, Charles Scoggins, Robert Christie. THIRD ROW: Milford Clark, Vera Kozakoff, Ruby Parrish, Rose Marie Nikolia, Patsy Dyes, Patricia Morris, Lucy Sabatelli, Eldridge Parrish. FOURTH ROW: Clayton Peterson, Doyle Sullivan, Owen Whisman, Robert Abney, Freddie Rice, Hubert Mann, Albert Mitchell, Bennie Leamre. ABSENT: Patsy Brown.



FIRST ROW: Gloria Tew, Frances Durden, Mary Frances Hughes, Virginia Weaver, Iona Bynum, Patricia Joyner, Margaret Hillman, Jean Wadsworth. SECOND ROW: Mr. Neal, Ray Harris, Kerry Kelley, Edgar Corley, Feril Maddox, Jeff Jeter, Donald Beckum, Gerald Wubbena. THIRD ROW: Pauline Williams, Evelyn Lovell, Beatrice Parrish, Faye Pettis, Betty Jo Carpenter, Marilyn Stancil, Theresa Williamson, Janice Denney. FOURTH ROW: Alton Boyt, Charles Oliver, Eileen McGuire, Carolyn Hartley, Malloy Pearson, Ivan Clanton. ABSENT: Charles Johnson, William Stalley, Virgil Taylor, Neil Nelson, Virginia Tuma, Virginia Creek.

FIRST ROW: Joanne Case, Nancy Murphy, Alice Guds, Eva Heufel, Lois Galster, Annie Pearl Stewart, Lois Sikes, Josie Williams. SECOND ROW: Buddy Cash, Darwin Croft, Theron Simpson, Van Pittman, Robert Williams, Patrick McInelly, Don Potter, Larry Garrett, Virgil Starling, Bennett More. THIRD ROW: Tommie Parker, Wanda Tucker, Barbara DeBoer, Eunice Alshbrook, Lavene Phillips, Lucy Peterson. ABSENT: Betty Jean Jones, Tillie Kidd, Jimmy Pitts, David Arley. ABSENT: Danny Moore.





FIRST ROW: Eugene Etheridge, Margaret Joyner, Alene Patterson, Frankie Sumner, Sara Frances Howard, Judy DeVault, Dora Singletary, Shirley Bettis, SECOND ROW: Larry Baggett, Griston Larramore, Harry Floyd, Marvin Donnavent, Luther McCall, Ralney Council, Milton Simmons, Robert Burham, Robert Bryant, THIRD ROW: Phyllis Mongue, Victoria Hancock, Velma Rutherford, Jean Sunde, Maxie Chesser, Marion Joyce Ditter, Mary Ann Caven, Marjorie Messer, FOURTH ROW: Donald Bryant, Marion Dewey, Jimmy Fowler, Clyde Lewellen, William White, Wanda Sawyer, Richard Hampton, Jon Wubbena, Jimmy Scarborough, Harold Sasser.

FIRST ROW: Orlan Clemens, Vestrice Smith, Martha Duke, Bonnie Barnes, Janice Bozenman, Libby Bauknight, Mary Ann Waldorf, Patricia Hazel, SECOND ROW: Kenneth Griffin, Billy Wilder, Howard Hodges, Myles Beckum, Leon Jamison, Jerry Armstrong, Audrey Straughn, E. J. Bryant, THIRD ROW: Alice Cobbin, Peggy Auton, Marie Williams, Margie Bass, Alice Faye Dupree, Tiaher Chesser, Verlyn Brown, Virginia Jones, FOURTH ROW: Billy Moorehead, Robert Miller, Hardy Hamm, John Brinson, Robert Helms, Eugene Ramsey, Roy Bryant, Dewey Ballard.



# LAURELS

KING AND QUEEN

SENIOR AND JUNIOR COURT

SENIOR AND JUNIOR NOTABLES

WILL AND PROPHECY







FIRST ROW: Eugene Etheridge, Margaret Joyner, Alene Patterson, Frankie Sumner, Sara Frances Howard, Jody DeVault, Dora Singletary, Shirley Bettis, SECOND ROW: Larry Baggett, Griston Larramore, Harry Floyd, Marvin Donnavent, Luther McCall, Rainey Council, Milton Simmons, Robert Burnham, Robert Bryant, THIRD ROW: Phyllis Mongue, Victoria Hancock, Velma Rutherford, Jean Sunde, Maxie Chessier, Marion Joyce Ditter, Mary Ann Caven, Marjorie Messer, FOURTH ROW: Donald Bryant, Marion Dewey, Jimmy Fowler, Clyde Lewellen, William White, Wanda Sawyer, Richard Hampton, Jon Wubben, Jimmy Scarborough, Harold Sasser.

FIRST ROW: Orlene Clemons, Vestrice Smith, Martha Dukes, Bonnie Barnes, Janice Bozenan, Libby Bauknight, Mary Ann Waldorf, Patricia Hazel, SECOND ROW: Kenneth Griffin, Billy Wilder, Howard Hodges, Myles Beckum, Leon Jamison, Jerry Armstrong, Audrey Straughn, E. J. Bryant, THIRD ROW: Alice Cobain, Peggy Auton, Marie Williams, Margie Bass, Alice Faye Dupree, Tiaher Chessier, Vertyn Brown, Virginia Jones, FOURTH ROW: Billy Moorhead, Robert Miller, Hardy Hamm, John Brinson, Robert Helms, Eugene Ramsey, Roy Bryant, Dewey Ballard.



# LAURELS

KING AND QUEEN

SENIOR AND JUNIOR COURT

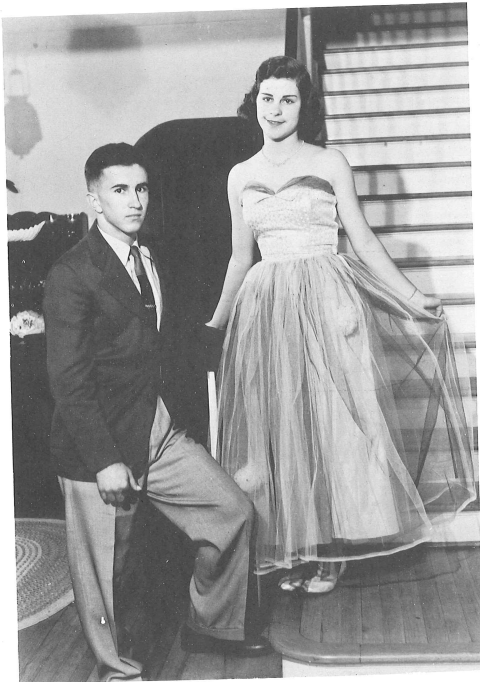
SENIOR AND JUNIOR NOTABLES

WILL AND PROPHECY





## KING AND QUEEN OF PASCO HIGH



• GEORGE COUNCIL  
and  
MARY WILSON

## SENIOR COURT



TOM WEIGHTMAN  
BARBARA LEE



STANLEY SMITH  
CHARLOTTE PUGH

## JUNIOR COURT

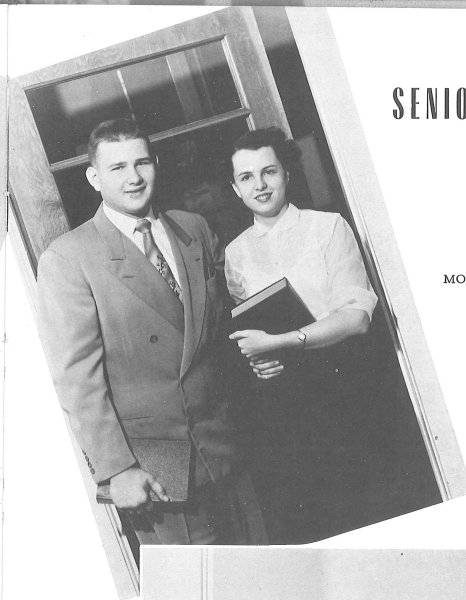
JIMMY SUMNER  
NANCY JONES



JOHNNY WATSON  
TED THOMAS

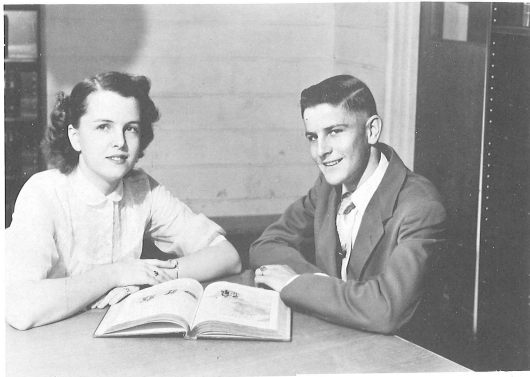
## SENIOR NOTABLES

MOST LIKELY TO SUCCEED AND  
MOST REPRESENTATIVE  
Joe Geiger and  
Joy Dew



MOST TALKATIVE  
AND BOLDEST  
Joe Quick and  
Charlotte Pugh





**MOST STUDIOUS**  
Edward Boyette and  
Joy Dew



**BEST LOOKING AND  
MOST POPULAR**  
George Council and  
Mary Wilson

**MOST FRIENDLY AND  
BEST PERSONALITY**  
Stanley Smith and  
Mary Wilson



**MOST FLIRTATIOUS**  
Stephen Nathe and  
India Warren



## JUNIOR NOTABLES

BEST LOOKING AND  
MOST POPULAR  
Jimmy Sumner and  
Nancy Jones



MOST REPRESENTATIVE  
AND MOST COOPERATIVE  
John Geiger and  
Ted Thomas



MOST STUDIOUS  
Alton Higgins and  
Althea Jones



MOST ATHLETIC  
Jimmy Sumner and  
Marie Bamberger

# WILL

We, the Senior Class of 1953, being of sound minds and bodies, do hereby bequeath to those who remain in this educational institution, all the good times, bad times and other times that we have had in the past years. To the faculty, we leave our grateful appreciation for the time and effort they have spent on us trying to make us useful citizens.

- To the Juniors we leave our great wisdom.
- To the Sophomores we leave our magnificence.
- To the Freshmen we leave our ambition.
- To the Freshmen we leave our ambition.
- I, Ruth Bellamy, will my love for Tampa to no-body.
- I, Marie Parker, will leave, I hope.
- I, Shirley Carpenter, will my neatness to La Monde Webb.
- I, Mary Carpenter, will my low sultry voice to Mary Gay Rhodes.
- I, Claude Leasure, will my ability to fix cars to Mr. Kitzmiller.
- We, Dickie Barber, Arthur Yates, and Stanley Smith, leave our rendition of "Gugu Soap" to others with the same wonderful talent.
- I, Thurman Hancock, leave my studious ability to anyone who can match it.
- I, Stephen Nathe, will my ability to argue to Raymond Gregory.
- I, Frances Williams, leave my nice manners and pleasing smile to Dorothy Fulmer.
- I, Robert Nathe, leave my mastery of the English language to Mr. Smith.
- I, Norma Morgan, will my dainty walk to Marie Bamberger.
- I, Betty Jo Harris, will not leave Henry.
- I, Bena Trowel, will myself to Jack.
- I, Emma Atwater, leave my red hair to Mary Jackson.
- I, Loretta Yeates, will my cute little giggle to Nancy Jones providing she keeps tuned up.
- I, Shirlee DeWitt, will my English grades to Jimmy Sumner.
- I, Carl Gaskin, will my shy manner to Don Shannon.
- I, Jewel Lay, leave my peppy manner to Ronny Cusmano.
- I, Helen Moore, leave my friendly manner to Patsy Pruett.
- I, Mary Mins, will my modest height and walk to Marilyn Jones.
- I, David Patterson, will my jolly laugh to Billy Haycraft.
- I, Celia Irwin, leave my ring with the green set to another individualist.
- I, Pat King, leave my ability to get stuck in sand to someone owning a shovel (perhaps Loretta Day.)
- I, Mary Sassaman, leave my motto "True to one man" to the next Mrs. of the Senior Class.
- I, Glen Weaver, will my genius in making out income tax forms to Mr. Flanagan.
- I, Joyce Payne, leave my witty manner to Janet Sprigg.
- I, Edith McNatt, leave my hatred for men in general to Jane Lawrence.
- I, Frances Jeter, leave my specially prepared kissproof lipstick to Ted Thomas.
- I, Joe LeHeup, will my quiet reserved manner to Archie Burnside.
- I, Dorothy Crapps, will my five free periods to another lucky person.
- I, Fred Armstrong, will my ability to keep peace and quiet at all times to the next Beta Club president.
- I, Lee Ashbrook, will my seat in Dewey Alford's sports model roadster back to Dewey, I'm tired of pushing.

- I, Clifford Couey, will my fine singing voice to Eldridge Burnsed.
- We, Curtis Law, Karlyn Hoover, John Lutz, Skippy Porter, Dale Bentkowski, and Glen Kirkland, will our ability to skip school three days out of five when the fishing weather is right and get away with it.
- I, James Valentine, will my speedy running to Coach Palmer.
- I, Gordon Peterson, will my typing ability to Nancy Luscomb.
- I, Grethel Johns, will my height to my brother, Dorman.
- I, Joan Hicks, will my driving ability to my brother, Richard Hickman.
- I, Joe Geiger, will my beautiful curly hair to Evelyn Reppard.
- I, Lillian Darmanin, will my bashful ways to Mary Burger.
- I, Jo Claire Edwards, will my southern drawl to Mary Burger.
- I, Irma Jean Dewey, will leave.
- I, Marie Fennell, will stick to San Ann and John.
- I, Peter Nikolai, leave my impudence to just anybody.
- I, Art Williamsen, will take all I have with me.
- I, Edward Boyette, will my daringness to Billy Carter.
- I, Joy Dew, will my A's to Althea Jones.
- I, Layton Philmon, leave my power over girls to Jimmy Sumner.
- I, Max McLeod, leave my, uh, leave my, oh, I'm just leaving.
- I, James Herndon, will my gold tooth to some other rich fellow.
- I, Eleanor Bromley, leave my love for chewing gum to Shirley Green.
- I, Ronald Smith, leave my trumpet playing to Gabriel.
- I, Roberta Ward, leave my drawing ability and pep slogans to Gail Pittman and Marilyn Armstrong.
- I, Charles Helms, will my football uniform to Bill Jamison.
- I, Wayne Bond, leave my ability to tinker in mechanics to Ruth Rogers.
- I, Jean Brinson, leave my lovely voice to Sylvia Wright.
- I, Ruth Bannworth, will my ability to get along with Miss Lewis to Joyce Brantley.
- I, Joe Quick, will my "Little Black Book" to Johnny Watson.
- I, Jeff Blitch, will my love of cattle and all that goes with it to Sonny Young.
- I, John McLaughlin, will my ability to walk blithely into English class every morning five minutes late to anyone who thinks he can.
- I, Horace Boyd, will my excess height and weight to Holland Coulter.
- I, Mary Ricketts, will my prolixity to Clio Jayne Hargraves.
- I, Mary Wilson, will my many beaux to Mary Cross.
- I, Billy Rollins, will my position in the office to Mary Camp.
- I, Melba Irvin, will my farming ability to Mr. Brown.
- I, Moreen Best, will take my green Chevrolet pickup with me.
- I, Charlotte Pugh, leave my inimitable laugh to Mr. Smith in case things get dull.
- I, India Warren, leave my ability to do the hula to anyone who thinks they can twist as well.
- I, George Council, leave my muscle building set to Tim Warren.
- I, Barbara Lee, will my well stocked "Hope Chest" to Lela Kemp.
- I, Tom Weightman, leave my unassuming character to James Townsend.
- I, Mary Sue Wilson, leave my pleasing smile to Helen Morgan.
- I, Betty Lou Mills, will my flirting ways to Joyce Boyette.
- I, Jane Camp, will my false teeth to some other unfortunate critter.
- I, Wendell Barfield, will be glad to have this annual completed.
- I, Mildred Hayman, will my loud voice to Margaret Sheffield.
- I, Barbara Jo Bettis, will my quiet charm to Nancy Luscomb.
- I, Carolyn Tait, will bookkeeping back to Mrs. Peden.
- I, Martha Strickland, will leave to set up housekeeping.

## PROPHECY

It is the year 1967, and the biggest Alumni Homecoming dance in the history of Pasco High is in full swing. Stanley Smith's Jazz 'Em Up Band is playing for us tonight on the lovely terrace of the palatial home of Mayor and Mrs. Gordon Peterson. Everyone is there from students who went to school in 1940 to students who are attending in 1967. Dean Blitch has come with his pretty wife, the former beauty queen of Pasco High, Mary Wilson. Mr. Geiger, who is now dancing with the famous movie queen, Edith McNatt, whom you may recognize by the screen name of Bana Burner, recently won the Nobel prize for his new mathematical theory about the fourth dimension. Miss Dew, director of the language department, is here with her fiancé, Lee Ashbrook. You may recall he is the famous game hunter who has just returned from a successful safari.

Art and Joyce (Payne) Williamsen are just sweeping in. Joyce is wearing a beautiful sable coat. Since Art has become the leading advertising executive in the South, Joyce collects rare furs for her hobby. Joyce is speaking to her rival in this hobby, Ruth Bellamy. Ruth has a slight edge on Joyce, being able to shoot and skin her own.

Grethel Johns is having a lovely time greeting old friends; she has been giving a series of lectures on journalism and has just returned from a trip to Europe. Mary Helen Mims has been talking to her. Mary Helen, as you know, is one of the top models in the United States; she is getting ready for screen tests in Hollywood in preparation for making several pictures. Edward Boyette is circulating and taking notes in his little black book; he is planning a sequel to his first book, "Habits and Motivations of The Human Male."

Horace Boyd has just tapped Melba Irvin's escort on the shoulder. We learn that he has been trying to convert Melba since she has become an engineering foreman. Dorothy Crapps, Betty Lou Mills, and Jane Camp are over in the corner flirting again; they really have made a success of a date bureau for lonely men. Three instructors at P.H.S. are talking shop and looking over old friends and students. You'll remember them--Mary Carpenter, head librarian; Clifford Couey, biology instructor; and Loretta Yeates, head of the English department. Loretta will soon be getting her Doctor's degree. Joe Quick, editor-in-chief of the new "Quick's Joke Book," is telling a few of his better ones soon to be published. Charlotte Pugh is dancing with her new husband; they met in Mexico while she was getting a divorce from her eighth "mistake."

Curtis Law, Glen Kirkland, John Lutz, and Karlyn Hoover, along with Skippy Porter, pooled their resources and developed the largest cattle ranch in Florida. When they came in, they left their guns, spurs, and fishing poles at the door. Oh yes, they still have time for fishing. Carolyn Tait, who is greeting them, came down from Washington. We hear that she is quite an expert on foreign policy. They are all making up for lost time talking to Wendell Barfield, who is now in the army as a "chief cook and bottle washer."

Ronald Smith and Roberta Ward are having a small argument with another couple on the floor about who bumped whom. Ronald is Dean at Wesleyan College for Women; he says he enjoys his duties very much. But wait; what is this commotion? There seems to be a large crowd of good-looking girls coming in the door, and stepping out of their midst, is none other than the town's most eligible bachelor, Layton Philmon.

Frances Jeter, now a general in the WAC's is having a wonderful time making eyes at George Council and his buddy, Fred Armstrong. We feel proud of them because a month from now they will become PFC's after eight years as recruits. Dick Barber, an undertaker, and Arthur Yates, head of the Goo Goo Soap Company, are having a heart-to-heart talk; Arthur's soap has been known to give Dick quite a few customers when taken internally. Thurman Hancock is keeping his eyes on James Valentine. The reason? Thurman is now with the FBI and is investigating James, a concert violinist, for transporting stolen jewels in his violin case. I heard that Stephen Nathe has a new job as a circus clown; a natural. Dale Bentkowski and Joan Hicks have speed records in boat racing and speed flying respectively. They have also caused a new record in squeamish stomachs. Ruth Bannworth, a CPA, has something to be proud of; she has just been named a top government economist and is ably assisted by Emma Atwater.

John McLaughlin, a prominent contractor for street cleaning, is helping set the stage for the floor show with Max McLeod, who owns a small but thriving business tuning pianos. Helen Moore, a famous interior decorator, is fixing the scenery; she kindly consented to fly down from Chicago on the spur of the moment.

Robert Nathe, James Herndon, and Peter Nikolai are putting their "two cents worth" in. As bootleggers they have a natural gift for arranging the indirect lighting; the bulbs must be well hidden. Charles Helms, the well-known stage actor, is giving a few pointers, too.

But wait, we still have a few late arrivals: Dr. Thomas E. Weightman, dental veterinarian, is here with his consultant, Dr. Bill Rollins. They have made millions on their false teeth for horses and cattle.



Moreen Best has just arrived with her escort, Wayne Bond, famous for his Indianapolis speed racers. Moreen has just invented a new gadget for Chevrolet pick-up trucks, a stripless gear, no less.

Mrs. Barbara (Lee) Alford is here with her charming five-year-old quintruplets, the only such set in Florida. Miss Jean Brinson and Miss Eleanor Bromley, owners of the Brin and Brom Beauty Salon, have just arrived with their dates, Carl Gaskin and David Patterson, who run the barber shop next door. Miss Pat King, medical artist at the Bone and Marrow Clinic, is escorted by her employer. We have two Hollywood make-up artists with us, Joe LeHeup and Jewel Lay. These boys seem to be doing well in their business.

Back to the show. The lights dim and the band plays soft strains of music. Robert Moore will be MC - just the person, as he is now with CBS on a question and answer program. Coming onto the stage are seven luscious, tantalizing, female fatalities: Mildred Hayman, Barbara Jo Bettis, Shirley Carpenter, Lillian Darmanin, Betty Jo Harris, Irma Jean Dewey, and Jo Claire Edwards. Next on the program are Shirlee DeWitt and Norma Morgan, who will give a ping-pong demonstration. They have become professionals in the game and are making \$200,000 a week. Glen Weaver has taken Red Barber's place as a sports announcer so he was chosen to introduce Marie Fennell, the world-famous woman wrestler, who will say a few words on that subject.

Now the spotlight is on Mary Sue Wilson, a rising opera star. All we can say is that the Metropolitan isn't what it used to be. A modern dance is next on the show. The dance is odd, maybe extreme is the word, so it must be and is none other than India Warren. After India has succeeded in tying herself into a knot, and has been carried off the stage, Bena Trowell takes over as the "Girl Juggler on Rollerskates." It really makes us happy that she doesn't miss once. Last but not least is Miss Frances Williams, a rare wit and playwright. After many years' search she has found this profession requires the least work. That was for her. Mary Ricketts and Martha Strickland have just run up on the stage; they didn't want to be left out, and they have a few well chosen words to say.

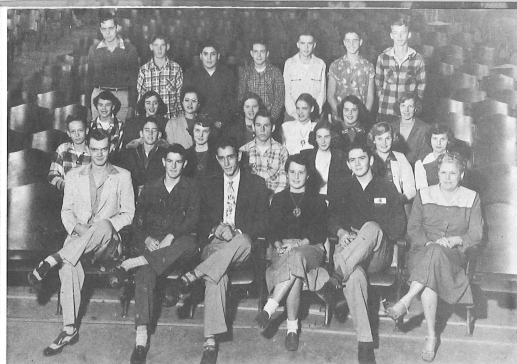
As the crowd begins to drift away from the stage, we see Mary Sassaman on the arm of her famous husband, Dr. Sassaman. And there to our left is Celia Irwin just back from darkest Africa (she's a television missionary). Patricia Lewis and Marie Parker, those celebrities of the First Thousand of Boston, are just walking out the door as the band begins to play our old Alma Mater.

So thus ends the dance and so go on the lives of our alumni. We wish for each of them good luck and happiness.

# ACTIVITIES

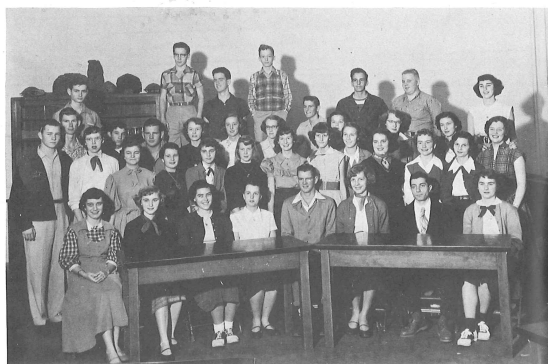


PASCO HIGH SCHOOL



## STUDENT COUNCIL

FIRST ROW: Dick Barber, reporter; Edward Boyette, vice president; Stephen Nathe, president; Gail Pittman, secretary; Jerry McNally, Mrs. McKillips, sponsor. SECOND ROW: Holland Coulter, Don Porter, Carol Agner, Lee Ashbrook, Nancy Brinson, Barbara Cash, Barbara Lee. THIRD ROW: Helen Morgan, Jo Claire Edwards, Mary Ida Council, Edith McNatt, Mary Camp, Janet Sprigg, Grethel Johns. FOURTH ROW: Billy Rollins, Jerry Armstrong, Louis Collura, Dennis Nutt, Don Aughenbaugh, Charles Edwards, Jon Wubbena.



## BETA CLUB

FIRST ROW: Mary Cross, Ted Thomas, Carolyn Tait, reporter; Joy Dew, secretary; Fred Armstrong, president; Grethel Johns, vice president; Mr. Jordan, sponsor; Althea Jones. SECOND ROW: John Geiger, Joan Hicks, Virginia Knight, Gail Pittman, Carleeta Goodwin, Charlotte Pugh, Carol Hoover, Joyce Boyette, Colene Goodwin, Janet Sprigg, Charlotte Pugh, Barbara Lee, Nancy Lascomb. THIRD ROW: Paul Wubbena, Tim Warren, Joe Geiger, Mary Jackson, Frances Mullins, Arlie Mae Mims, Edward Boyette, Lottie Scarborough, Eloise Summer, Evelyn Summer. FOURTH ROW: Wendell Barfield, Raymond Gregory, John Dew, Holland Coulter, David Nathe, Douglas Tipton, Patricia Herring.

## PIRATE STAFF

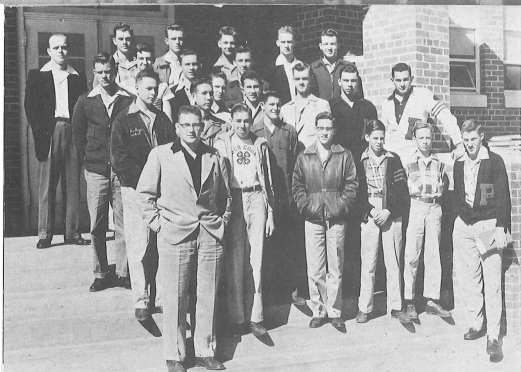


FIRST ROW: India Warren, photo editor; Charlotte Pugh, features; Wendell Barfield, editor; Pat King, assistant editor; Joan Hicks, features. SECOND ROW: Joe Geiger, art; Edith McNatt, girls' sports; Grethel Johns, features; Althea Jones, junior editor; Melba Irvin, typist; Tom Weightman, boys' sports. INSET: Albert Smith, sponsor.



## PIRATE LOG STAFF

FIRST ROW: Marilyn Armstrong, Nancy Lascomb, typist, Patricia Herring, Marie Bamberger, production manager, Mary Cross, business manager, Ted Thomas, editor, Althea Jones, co-editor, Sylvia Wright, Mary Jackson, make-up editor, Nancy Jones, Mary Camp. SECOND ROW: Barbara Armstrong, James Nixon, art, Helen Sparkman, Ronnie Roseman, Jim Kozacoff, Harvey Simpson, Colene Goodwin, Joyce Boyette, Hazel Sparkman, Barbara Bennett, Janet Sprigg.



## KEY CLUB

FIRST ROW: Joe Geiger, president; Peter Nikolai, Edward Boyette, Raymond Gregory, Jerry Stubbs, Holland Coulter, Tom Weightman, treasurer. SECOND ROW: John Geiger, secretary; Stanley Smith, Johnny Watson, George Council, Dick Barber, Arnold Godwin, James Valentine. THIRD ROW: Fred Ammon, vice-president; Joe Quick, John Bamberger, Billy Jamison. FOURTH ROW: Mr. Pillsbury, sponsor; Henry Boyette, Curtis Law, Dewey Alford, Jimmy Carter.

## VARSI- LETTERMEN



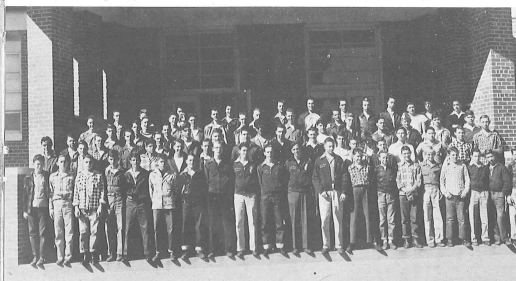
FIRST ROW: Tom Weightman, Joe Geiger, Jimmy Sumner, Jeff Blitch, James Valentine, Richard Hickman, Charles Clements, Jerry McNally. SECOND ROW: David Johnson, John Ballard, Clifford Clark, Jimmy Carter, Dewey Alford, Arnold Godwin, John Bamberger, Billy Jamison, George Council, John McLaughlin, Curtis Law, Stanley Smith, Tim Warren, George Carpenter, Virgil Johns.

## F.H.A.

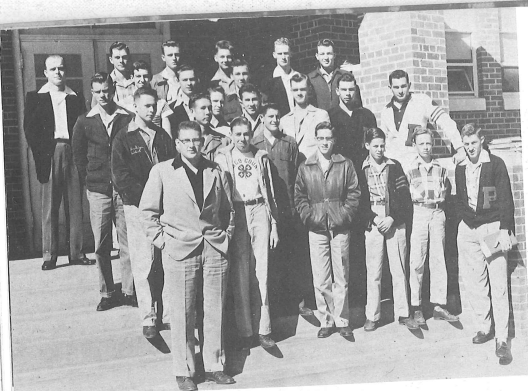


FIRST ROW: Gail Burrows, secretary; Frances Mullins, reporter; Emma Atwater, president; Laura Peacock, Ruth Bamwarth, treasurer; Patsy Pruett, Gail Pittman, vice president; Bobbie Sherwin. SECOND ROW: Margaret Stephens, Nancy Brinson, Joyce Champion, Verona McElveen, Ophelia Register, Loreta Wiener, Shirley Green, Margaret Sheffield, Barbara Brock, Sylvia Mathis, Miss Lewis, sponsor; Loreta Day. THIRD ROW: Joann Sumner, Juanita Bromley, Nancy Sprigg, Mary Basknight, Nell Futch, Mabel Shearer, Marie Rice, Sylvia Miller. FOURTH ROW: Susan Fehlberg, Clio Jane Hargraves, Joyce Brantley, Charlotte Futch, Ruth Nathe, Carol Agner, Patsy Nathe, Mary Sabatelli, Barbara Cash, Myrna Beck, Rebecca Futch, Annette Tyner, Mavis Hughes.

## F.F.A.



FIRST ROW: James Grantham, Jackson Comer, Robert Sesoms, Claude Toller, Melvin Jones, Jerry Bush, Freddie Weeks, Don Shannon, reporter; Sonny Young, treasurer; Mark Weeks, secretary; David Nathe, vice president; John Geiger, president; Billy Brooks, Robert Stewart, Edward Gurey, Samuel Dawson, Kenneth Cooper, Harold Tipton, Willie Helveston, Jim Burney. SECOND ROW: Billy Rollins, David Patterson, Junius Jones, Jewel Lay, Glen Kirkland, James Kight, George Porter, Lavoy Farmer, Tommy Anderson, David Johnson, Clifford Clark, Arnold Godwin, Charles Gurey, James Factor, Jimmy Brown, Alfred Henkel, Laudale Hines, Harold Reedy, Eugene Courtney, Robert Sanders, Clifford White. THIRD ROW: Charles Edwards, Charles Helms, Eddie Hines, La Vern Sullivan, Don Lewis, Jerry Coleman, Daniel Hines, Henry Boyette, Jimmie Sumner, Merle Garth, Bobby Farr, Stewart Herring, Jonathan Revels, Bobby Eldridge, Darryl Tait, Donald Walker, Richard Miller, Charles Bracher. FOURTH ROW: Jimmy Cooper, Johnny McElveen, Marvin Hall, Billy Taylor, Paul Sasser, Billy Jamison, Richard Hickman, Dewey Alford, Jeff Blitch, Stephen Nathe, Dorman Hicks, Robert Nathe, Jerry Gibbons, Daniel Black, Mayhne Fallin.



## KEY CLUB

FIRST ROW: Joe Geiger, president; Peter Nikolai, Edward Boyette, Raymond Gregory, Jerry Stubbs, Holland Coulter, Tom Weighman, treasurer. SECOND ROW: John Geiger, secretary; Stanley Smith, Johnny Watson, George Council, Dick Barber, Arnold Godwin, James Valentine. THIRD ROW: Fred Armstrong, vice-president; Joe Quick, John Bamberger, Billy Jamison. FOURTH ROW: Mr. Pillsbury, sponsor; Henry Boyette, Curtis Law, Dewey Alford, Jimmy Carter.

## VARSIY LETTERMEN



FIRST ROW: Tom Weighman, Joe Geiger, Jimmy Sumner, Jeff Blitch, James Valentine, Richard Hickman, Charles Clements, Jerry McNally. SECOND ROW: David Johnson, John Ballard, Clifford Clark, Jimmy Carter, Dewey Alford, Arnold Godwin, John Bamberger, Billy Jamison, George Council, John McLaughlin, Curtis Law, Stanley Smith, Tim Warren, George Carpenter, Virgil Johns.

## F.H.A.



FIRST ROW: Gail Burrows, secretary; Frances Mullins, reporter; Emma Atwater, president; Laura Peacock, Ruth Bamwarth, treasurer; Patsy Pruett, Gail Pittman, vice president; Bobbie Sherwin. SECOND ROW: Margaret Stephens, Nancy Brinson, Joyce Champlin, Verona McElveen, Ophelia Register, Loretta Werner, Shirley Green, Margaret Sheffield, Barbara Brock, Sylvia Mathis, Miss Lewis, sponsor; Loretta Day. THIRD ROW: Joann Sumner, Juanita Bromley, Nancy Sprigg, Mary Banknight, Nell Futch, Mabel Shearer, Marie Rice, Sylvia Miller. FOURTH ROW: Susan Fehlberg, Clio Jane Hargraves, Joyce Brantley, Charlotte Futch, Ruth Nathe, Carol Agner, Patsy Nathe, Mary Sabatelli, Barbara Cash, Myrna Beck, Rebecca Futch, Annette Tyner, Mavis Hughes.

## F.F.A.



FIRST ROW: James Grantham, Jackson Comer, Robert Sessions, Claude Toller, Melvin Jones, Jerry Bush, Freddie Weeks, Don Shannon, reporter; Sonny Young, treasurer; Mark Weeks, secretary; David Nathe, vice president; John Geiger, president; Billy Brooks, Robert Stewart, Edward Gurey, Samuel Dawson, Kenneth Cooper, Harold Tipton, Willie Helveston, Jim Burney. SECOND ROW: Billy Rollins, David Patterson, Junius Jones, Jewel Lay, Glen Kirkland, James Kight, George Porter, Lavoy Farmer, Tommy Anderson, David Johnson, Clifford Clark, Arnold Godwin, Charles Gurey, James Factor, Jimmy Brown, Alfred Heufel, Laudale Hines, Harold Reedy, Eugene Courtney, Robert Sanders, Clifford White. THIRD ROW: Charles Edwards, Charles Helms, Eddie Hines, La Vern Sullivan, Don Lewis, Jerry Coleman, Daniel Hines, Henry Boyette, Jimmie Sumner, Merle Garth, Bobby Farr, Stewart Herring, Jonathan Revels, Bobby Eldridge, Darryl Tait, Donald Walker, Richard Miller, Charles Bracher. FOURTH ROW: Jimmy Cooper, Johnny McElveen, Marvin Hall, Billy Taylor, Paul Sasser, Billy Jamison, Richard Hickman, Dewey Alford, Jeff Blitch, Stephen Nathe, Dorman Hicks, Robert Nathe, Jerry Gibbons, Daniel Black, Mayhue Fallin.

## PASCO HIGH



FIRST ROW: Althea Jones, Nancy Jones, Ted Thomas, Charles Gurey, Lois Sessions, SECOND ROW: Edith McNatt, Janice Hines, Jimmy Johnson, Margaret Sheffield, Wynelle Sawyer, Rose Nikolai, Mary Gay Rhodes, THIRD ROW: Patsy Natche, Jeanette Hauff, Patricia Morris, Nell Futch, FOURTH ROW: Eldridge Burns, Gloria Baldwin, Helen Morgan, Ruth McCullers, Harvey Simpson, Marvin Hall, Mary Bauknight, Carol Agner, Judith Lindsey, Louis Collura, Annette Tyner, Billy Haycraft, Gail Pittman.



## MAJORETTES

FIRST ROW: Helen Morgan, Barbara Lee, Gloria Baldwin, SECOND ROW: Patricia Lewis, Mary Wilson, head Majorette; Eldridge Burns, drum major; Frances Jeter.

## SCHOOL BAND



FIRST ROW: Phil Williams, Joann Summer, Joy Dew, Marilyn Jones, SECOND ROW: John Dew, Helen Miller, Joyce Payne, Ronald Cusmano, Mary Cross, THIRD ROW: Frank Elkins, Bobby Nikolai, Douglas Tipton, Stewart Herring, Ronnie Roseman, J. W. Hummick, Jerry Stubbs, FOURTH ROW: Loretta Werner, Marie Hendry, Stanley Smith, Holland Coulter, Dick Barber, Lavon Beverly, Henry Boyette, Mary Jackson, Grethel Johns, Frances Jeter, Patricia Lewis, Barbara Lee, Mary Wilson.

The Pasco High Band is one of the most active organizations on the campus. In addition to its performances at athletic events, it has made, over the years, trips to the Orange Bowl games in Miami and the inauguration of Florida's two most recent governors. Other parades in which it customarily participates are Gasparilla and the Latin Festival, Tampa, the Strawberry Festival, Plant City, and the Festival of States, St. Petersburg. It has played in local parades and other civic enterprises.

Mrs. Gilbert G. Byrd has been director of the Pasco High band for ten years; in addition to her faithful efforts in its behalf, she has contributed a major part to the success of the annual operettas presented by the students of Pasco High.





FIRST ROW: Mary Cross, Mary Ricketts, Edith McNatt, Pat King, secretary, Mr. Baynes, sponsor, Dick Barber, president, Janet Sprigg, Mary Camp, SECOND ROW: Joyce Payne, Nancy Jones, Jean Brinson, Mary Wilson, Gail Pittman, Betty Lou Mills, Charlotte Pugh, India Warren, Marilyn Armstrong, Sylvia Wright, Mary Jackson, Frances Jeter, THIRD ROW: Evelyn Reppard, Helen Sparkman, Jane Lawrence, Hazel Sparkman, Barbara Bennett, Barbara Armstrong, Roberta Ward, Mary Lane, FOURTH ROW: Jimmy Johnson, Tom Weightman, Stephen Naehe, Stanley Smith, Fred Armstrong, Joe Geiger, Wendell Barfield, J. W. Hummcutt, Phil Williams, Frank Elkins, Holland Coulter.

## PUBLICITY CLUB

## MUSIC APPRECIATION CLUB



FIRST ROW: Gail Pittman, president; Joy Dew, reporter; Althea Jones, vice president; Pat King, secretary; SECOND ROW: Marjorie Miner, Edith McNatt, Joyce Payne, Susan Fehlberg, Nancy Jones, Mary Cross, Neil Futch, Wynelle Sawyer, Barbara Godwin, THIRD ROW: Mary Bauknight, Joann Sumner, Jumella Maloof, Myrna Beck, Annette Tyner, Nancy Brinson, Clio Jane Hargraves, Wanda Clements, FOURTH ROW: Jane Lawrence, Marilyn Jones, Loretta Straughan, Evelyn Reppard, Joyce Brantley, Paty Naehe, Kaye Dyal, Frances Mullins, Gail Burrows, Barbara Cash, FIFTH ROW: Ronald Cusmano, Jimmy Johnson, John Hester, J. W. Hummcutt, Phil Williams, Billy Haycraft, Don Aughenbaugh, Tommy Touchton.

## SPANISH CLUB



FIRST ROW: Nancy Jones, Pat King, Jimmie Crews, vice president, Shelby Simmons, secretary, Mrs. Pillsbury, sponsor, Eldridge Burns, president, Carol Hoover, Arthur Yates, SECOND ROW: Madeline Rowland, Jean Ogle, Marian Davenport, Charlotte Futch, Joan Thomas, Dorothy Fulmer, Betty Tucker, Mavis Hughes, THIRD ROW: Rachel Etheridge, Marjorie Fudge, Mary Lou Bozeman, Mary Ida Council, Janet Sprigg, Barbara Bennett, Dimple Stevens, Jane Currie, FOURTH ROW: James Turner, Stanley Carlisle, Evelyn Sumner, Phala Duncan, Hassell Bowman, Roberta Ward, Mary Sabatelli, Harold Harrison.



FIRST ROW: Van Pittman, Bobby Williams, Theron Simpson, Jerry Stubbs, Alton Higgins, vice-president, Joe Quick, president, SECOND ROW: Jimmie Crews, James Factor, Bobby Hormuth, Charles Bolton, Wendell Barfield, secretary, Laura Peacock, Eloise Sumner, Mr. Kitzmiller, sponsor.

## RADIO CLUB



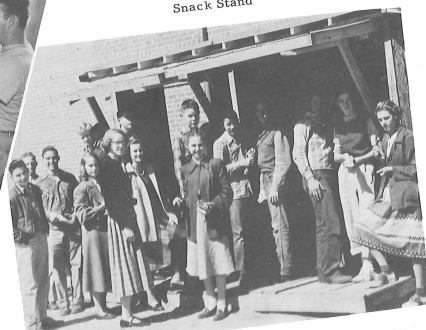


"Coming 'Round The Mountain" - Beta Club Play

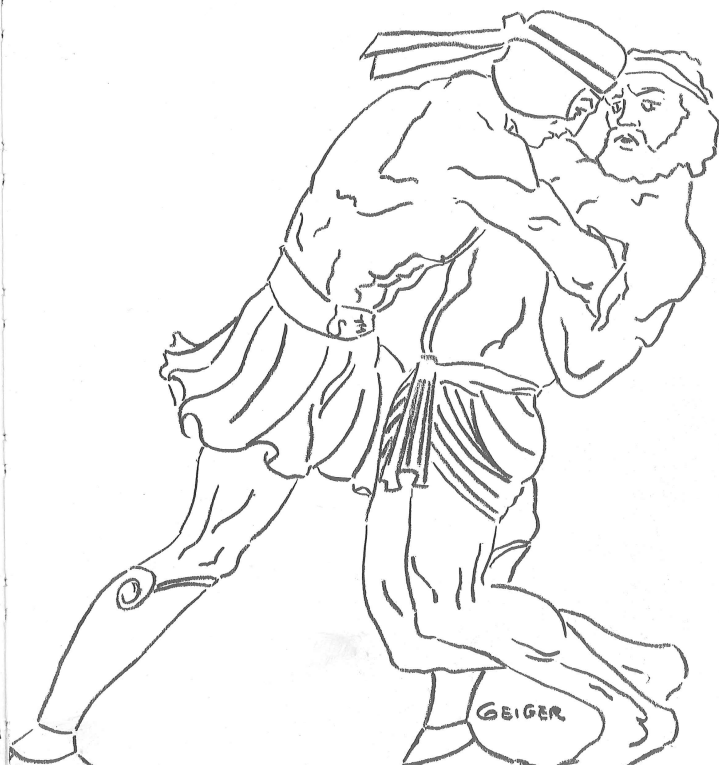


"Surprise Pups"

Snack Stand



# ATHLETICS





**KING AND QUEEN  
OF SPORTS**  
Tom Weightman and  
Betty Lou Mills



**HOMEcoming QUEEN**  
Barbara Lee



FIRST ROW: Richard Hickman, George Council, Alan Naber, Arnold Godwin, Jimmie Sumner, Clifford Clark, Jim Kozacoff, Tom Weightman, Charles Helms, Warren Bennett. SECOND ROW: Dewey Alford, Karllyn Hoover, Curtis Law, Wayne Hoover, Jeff Blitch, Jimmie Carter, Horace Boyd, John Ballard, Sonny Young. THIRD ROW: Joe Geiger, Bart Anderson, Grantham McMillan, James Valentine, George Carpenter, David McElveen, David Johnson, John Bamberger, Tim Warren. FOURTH ROW: Charles Clements, James Townsend, Tommy Anderson, Virgil Johns, Junior Odom, Melvin Jones, J. T. Helms, Kenneth Huffstutler. FIFTH ROW: Coach Palmer, Coach Crum, Jack Buchanan, Roy Hancock, Billy McPherson, Daniel Hines, Earl Hobbs, Waddy Jones, Coach Baynes.

The Pirates under the direction of head coach "Dab" Palmer and assistants Dan Crum and Jim Baynes stormed to a 9-1 season record and the Tampa Bay Conference championship. The Pasco eleven had an easy time in its first two encounters with Admiral Farragut and Venice-Nokomis but found it rough going the following week against Tarpon Springs' heavier Spongers. This was the only tragedy for the Pirates, as the game ended with Tarpon on top 26-14. Redeeming themselves in their next engagement, the "Big Red," lead by halfbacks George Council and Richard Hickman, whipped a good Brandon team 27-0. After Brandon, the Pirates rolled over Brewster Tech, Pinecrest, St. Paul, Largo, and New Port Richey in that order. All these games were won by wide margins. Inspired by Homecoming and school spirit, the Pirates stopped a previously unbeaten Turkey Creek club 20-0. Before this contest the Gobblers had been undefeated for twenty-six consecutive games. The Pasco offensive team scored 297 points this season while the defensive team held opponents to a mere 46 points.

Jeff Blitch, Joe Geiger, and James Valentine were key men in Pasco's stellar forward wall, while backs Dewey Alford, Jimmy Carter, and Jim Sumner stood out. This was the main factor in our foe's lack of points against the Pirates.

Although regulars received much credit for the team's success, the substitutes should be commended. It is they who take everything that the varsity can throw at them in practice. They are not reserves because of lack of ability but because of lack of experience, and with a little determination, they will be the Pirates of the future seasons.

Seniors who played their last game for Pasco High are Curtis Law, Karllyn Hoover, James Valentine, Joe Geiger, Horace Boyd, Charles Helms, George Council, Jeff Blitch, Tom Weightman, John Bamberger, and Dale Bentkowiak. Players who made All-Conference team are Jeff Blitch, George Council, Tom Weightman, and Jimmy Carter.

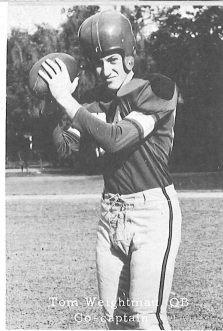
## FOOTBALL



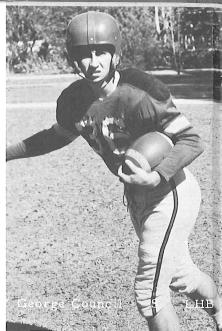
Dan Crum, line coach; "Dab" Palmer, head coach; Jim Baynes, ass't. coach.



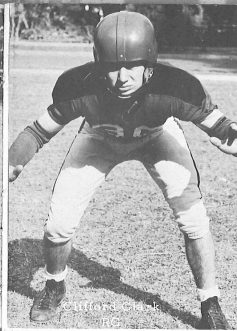
James Whitaker RE LG



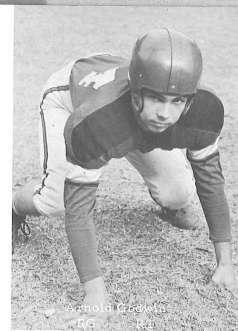
Tom McWhorter QB  
Star Captain



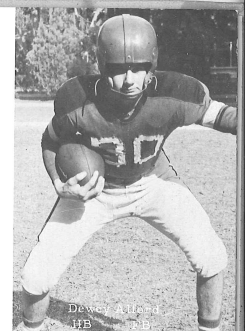
George Conner RB RHE



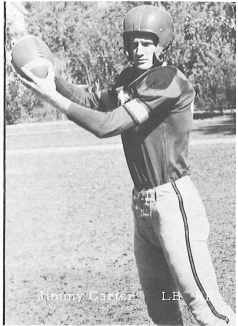
Clifford Clark RB LG



Arnold Grewala RB LG



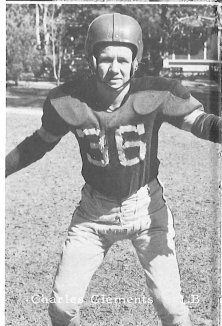
Dewey Miller HB



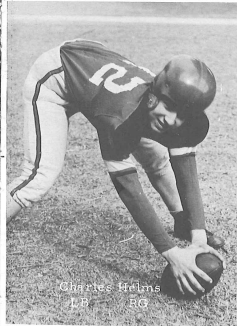
Jimmy Carter LB



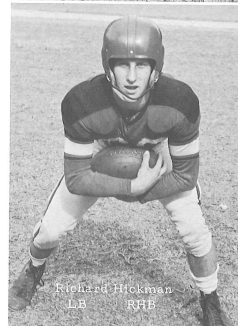
Tom Spitzer RB LG



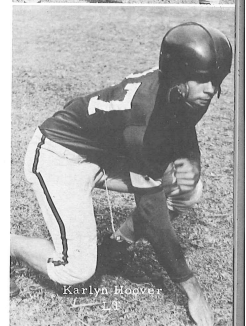
Charles Clements LB



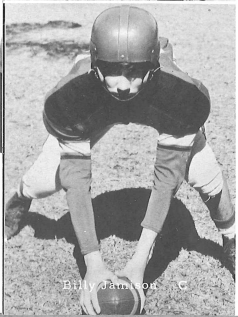
Charles Helms LB RB



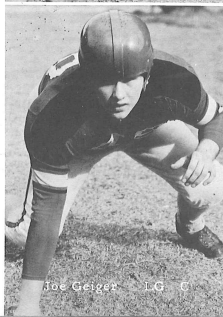
Richard Hickman LB RHE



Karlyn Hoover LB



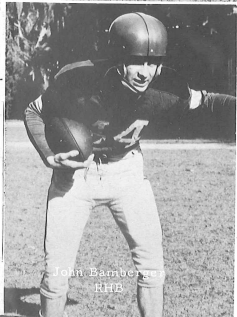
Billy Dunn RB C



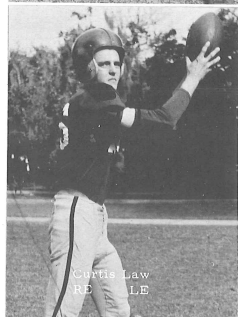
Bob Greiger LG C



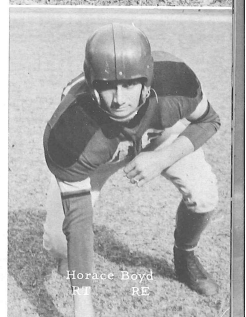
Brian Nader C



John Bamberg RHE



Curtis Law RB LB



Horace Boyd RB RE



FRONT ROW: Jimmy Sumner, Johnny Watson, Charles Clements, Tom Weightman, Billy Jamison, SECOND ROW: Mr. Baynes, coach, Ronald Smith, Jimmy Carter, Horace Boyd, Charles Bolton.

## BOYS' BASKETBALL



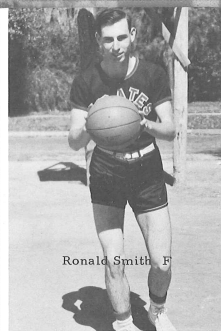
Joe Geiger, score keeper, Jim Baynes, coach, Charles Bolton, manager.

"B" SQUAD, Warren Bennett, Lee Stanfield, Bruce Jones, Leon Jamison, Charles Edwards, Billy Agner, Tim Warren, Alfred Heufel, Raymond Smith, Jim Kozacoff.

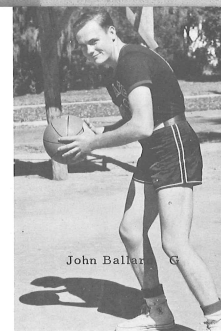


The Pirates got off to a good start in their first game against Wimauma, downing the Wildcats 75-50. The Pasco quintet also scored two victories each over the Groveland and Bushnell clubs. The Pirates played their best in beating New Port Richey 71-52 and in losing to St. Leo. Dude City also suffered losses to Brandon and Brewster Tech and was defeated twice at the hands of the O. L. P. H. Bears of Tampa.

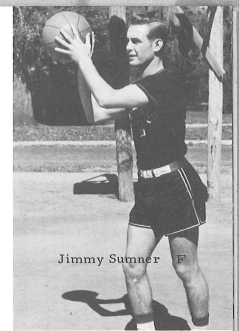
Jimmy Sumner, a forward, has been the team's high scorer this season, followed closely by Billy Jamison, Jim Carter and Horace Boyd have also shown plenty of offensive ability in rebounding and shots under the basket. Johnny Watson's and Charles Clements' improvement this year should make them even more valuable next year. The team will lose three seniors this year, Tom Weightman, Horace Boyd, and Ronald Smith.



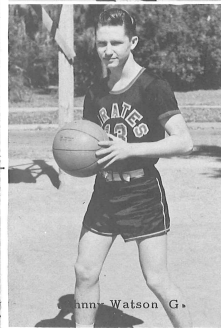
Ronald Smith F



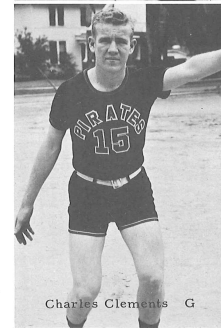
John Baller G



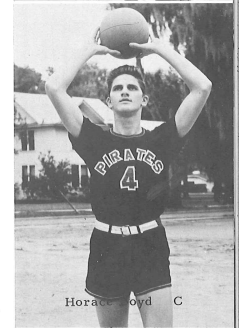
Jimmy Sumner F



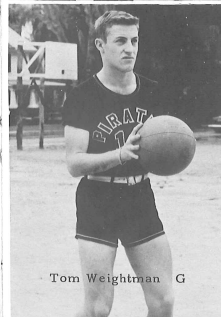
Johnny Watson G



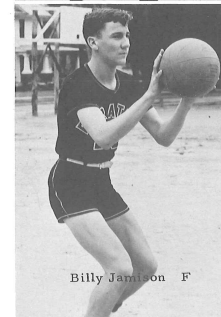
Charles Clements G



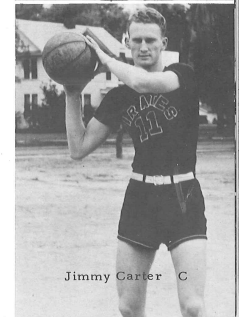
Horace Boyd C



Tom Weightman G



Billy Jamison F



Jimmy Carter C



FRONT ROW: Barbara Brock, Loretta Day, Marie Bamberger, Betty Lou Mills, Pat King, Phala Duncan, Betty Lou Clark. SECOND ROW: Mary Ricketts, Shirley Donahoo, Joyce Brantley, Evelyn Sumner, Eloise Sumner, Edith McNatt, Jane Lawrence, Joyce Payne, Mrs. Brady, coach.

## GIRLS' BASKETBALL

The girls' basketball team, despite good coaching and spirit, was unable to make the win column this year.

Girls who have seen plenty of action for the Pasco sextet are forwards Betty Lou Mills, Pat King, Edith McNatt, and Phala Duncan. The guards are Loretta Day, Betty Lou Clark, Barbara Brock, and Marie Bamberger. Joyce Brantley and Eloise Sumner, a pair of sophomores, have also played a lot.

Our captains this year are Marie Bamberger and Betty Lou Mills. Our Coach, Mrs. Brady, has praised managers Mary Ricketts and Joyce Payne for their help with the team.

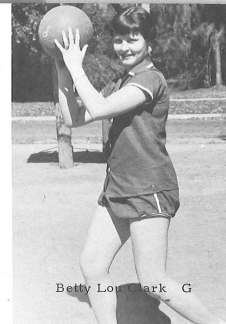
Opponents		Pasco
Webster	35	18
O. L. P. H.	32	22
Webster	34	26
Wimauma	56	36
Grpveland	40	35
O. L. P. H.	36	34



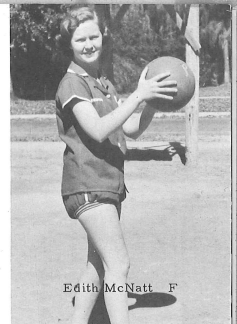
Joyce Payne, manager, Mrs. Brady, coach, Mary Ricketts, manager



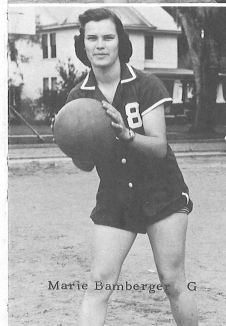
Phala Duncan F



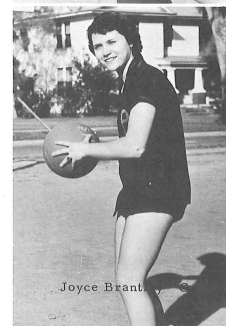
Betty Lou Clark G



Edith McNatt F



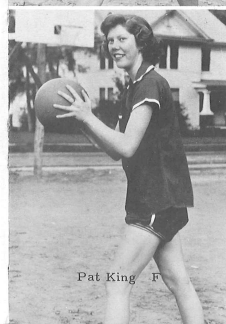
Marie Bamberger G



Joyce Brantley G



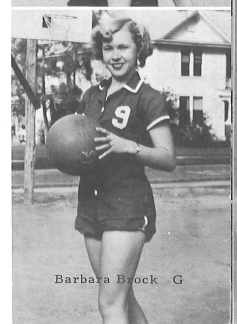
Loretta Day G



Pat King F



Betty Lou Mills F



Barbara Brock G



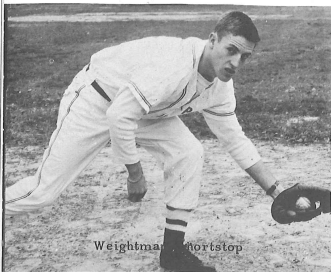


FIRST ROW: Stanley Smith, Arnold Godwin, Billy Wilder, batboy, Richard Hickman, Tom Weightman,  
SECOND ROW: Roger Carpenter, John Bamberger, Curtis Law, Jimmy Carter, James Valentine.

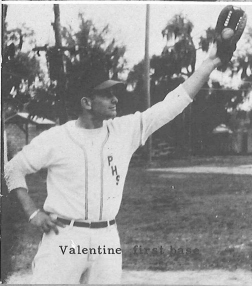
## BASEBALL

The Pirate baseball team should have another successful season this year. Nine lettermen will return from last year's squad. The lettermen will be supported by a host of newcomers, which will include a well-balanced pitching staff and plenty of depth in the infield and outfield positions.

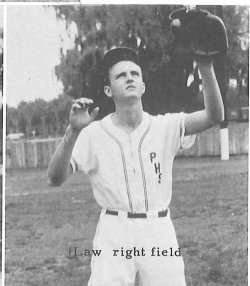
A few teams on the Pasco schedule are Lakeland, St. Paul, and Hillsborough; these teams are three of the strongest in the state.



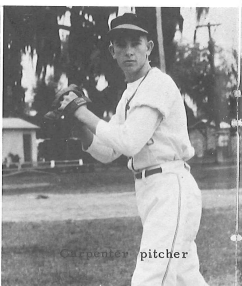
Weightman shortstop



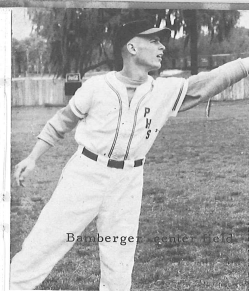
Valentine first base



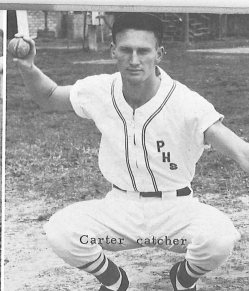
Law right field



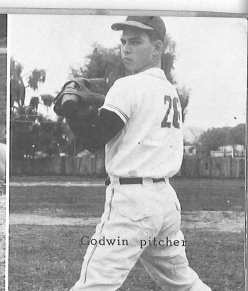
Carpenter pitcher



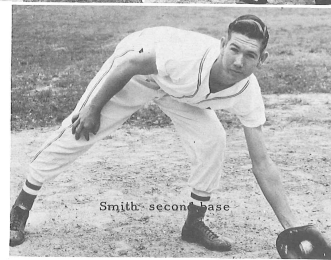
Bamberger center field



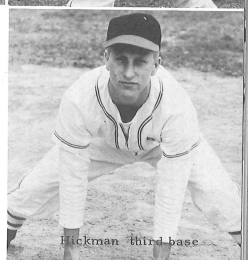
Carter catcher



Godwin pitcher



Smith second base



Hickman third base

## TRACK



FIRST ROW: Bobby Eldridge, John Bamberger, Archie Burnside, Billy Jamison, Horace Boyd, Jimmy Sumner, Dickie Bolocanoff, Lee Ashbrook, Richard Hickman, Jimmy Carter, SECOND ROW: Raymond Smith, Joe Quick, Virgil Johns, Clifford Clark, George Carpenter, Joe Geiger, Tim Warren, Dewey Alford, Billy McPherson, Karlyn Hoover, Harvey Simpson, NOT SHOWN: Dan Crum, coach.





Charlotte Pugh



Betty Lou Mills



Mary Camp

### CHEERLEADERS



Jane Camp



KNEELING: Jane Camp, Charlotte Pugh, STANDING: Mary Ricketts, Hazel Sparkman, Mary Camp, Betty Lou Mills, Helen Sparkman.



Mary Ricketts

Helen Sparkman

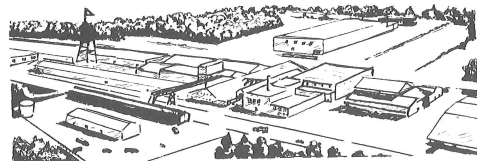


Hazel Sparkman



Compliments of

## PASCO PACKING CO.



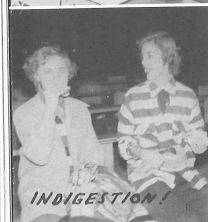
**World's Largest Producers  
and Processors of Citrus**



HMMmm?



DUH!



INDIGESTION!

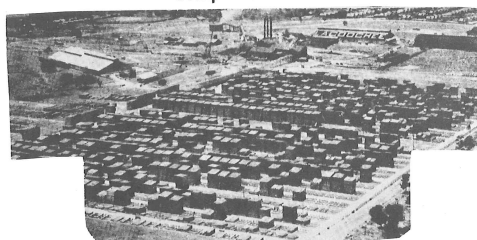


HELLOoo.



RHHN!

Compliments of



*Cummer Sons*  
**CYPRESS COMPANY**

LACOOCHEE, FLORIDA

*Vita Craft*

DISTRIBUTOR FOR

FAMOUS VITA SEAL SYSTEM OF COOKING

BELK LINDSEY BLDG.

P. O. BOX 37

PHONE 80

The  
**Dade City Banner**

Pasco County's Leading Newspaper

Quality Printing

Published Weekly—Read Daily



*Latest  
Fashions*

*Hardy & Lingle Dept. Store*

Dade City, Florida

Complete Line for Men, Women and Children

Your Patronage Is Always

Appreciated Here

AT

**BELK LINDSEY  
COMPANY**

Meridan & 8th

Dade City, Fla.

Compliments of

**TAMPA  
ELECTRIC  
COMPANY**

PASCO COUNTY DIVISION

Dade City

Florida

OOH JOE!!



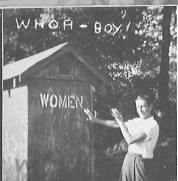
AH~CHOO!



PRECIOUS MOMENTS



"OUT" OF FOCUS



MAESTRO



ON THE BALL!



Compliments of

# Bank of Pasco County

Established 1889

DADE CITY

FLORIDA

Compliments of

## WADSWORTH CANDY CO.

Dade City

Florida

Compliments of

## Modern Cleaners

Free Delivery Service

ALTERATIONS  
Phone 143

LAUNDRY SERVICE  
8th and Church

Compliments of

DADE CITY

COCA - COLA

Dade City

Florida

Compliments of

PASCO MOTOR

Service Station

Mgr. Homer Hobby

Dade City, Fla.

Phone 352

## PASCO ABSTRACT COMPANY

Est. 1889

Mrs. C. A. Lock, Pres.

Land Titles

Title Insurance

Agent For Title & Trust Co. of Fla.

Dade City

Florida

Compliments of

## WILLIAMS

Department Store

Dade City

Florida

Compliments of

R. W.  
(Roddy)

WOODCOCK'S

Jewelry Store  
208 S. 7th

Phone 30 White

G. & W.

MOTOR COMPANY

Dodge and Plymouth

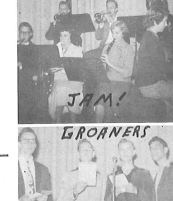
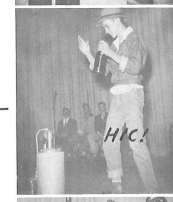
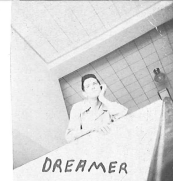
Sales and Service

Phone 33

5th and Pasco

Dade City

Florida



## SESSOM'S GROCERY

423 North 7th St.  
DADE CITY, FLORIDA

Store Hours 7:30 A.M. till 8:00 P.M.

Frozen Foods — Choice Meats

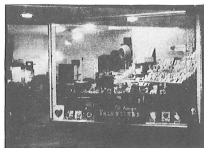
Phone 18 Red

**Tyler's Office  
Supply, Inc.**

Three Stores To Serve You  
Better

DADE CITY — WINTER HAVEN  
HAINES CITY  
Complete Line Office Supply  
and Equipment

C. A. "Tony" Collins  
Mgr. Dade City Store



Compliments of

**STANDARD LOAN COMPANY  
STANDARD FINANCE COMPANY**

437 N. 7th

Dade City, Florida

Compliments of

**Pasco Motors**

Ed Madill

Dade City

Florida

Congratulations and Best Wishes

To The Graduating Class.

May Each Member's Future Life

Be Filled

With Success and Happiness

sincerely

your school photographer

**ZELLER STUDIO**

phone 3941

Inverness

Florida

**L. & L. SUPER MARKET**

Your One-Stop Food Store

N. 7th Street

Phone 253 blue

L. & L. FARMER'S FEED & SUPPLY

FEEDS—SEEDS—FERTILIZERS—BABY CHICKS

N. 7th Street

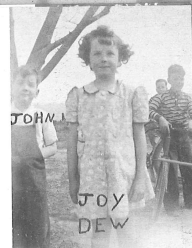
Phone 253 white

**ADAMS IGA STORE**

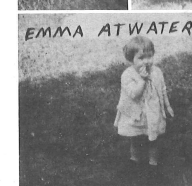
Lowest Prices

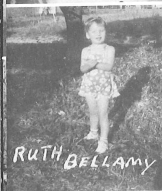
106 S. 8th

Dade City, Fla.



JOHN  
JOY  
DEW  
MARILYN & ALTHEA  
JONES





Compliments of  
  
NIKOLAI BROTHERS  
  
Dade City Florida

HANGCOCK'S 5 - 10 - 25  
  
Home of Nifty  
School Supplies  
419 N. 7th Street  
Dade City, Florida

Compliments of  
  
RELIABLE  
BEAUTY SALON  
Dade City Florida

Compliments of  
  
DANIEL  
FURNITURE CO.  
Dade City  
Florida

Compliments of  
  
**MADILL FURNITURE COMPANY**  
  
Dade City, Florida

Congratulations  
to the  
Graduating Class of '53  
  
**TABLE SUPPLY**  
  
Dade City Florida

Students  
Your Education Is Priceless  
Congratulations  
From  
**Pasco Farm and Ranch Supply**  
HIWAY 301 N. DADE CITY, FLA.

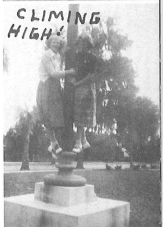
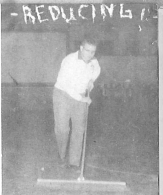
Compliments of  
  
*Myron G. Naber*  
JEWELER  
DADE CITY FLORIDA

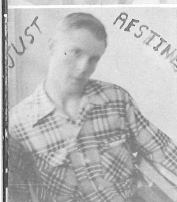
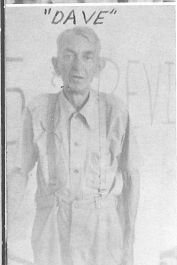
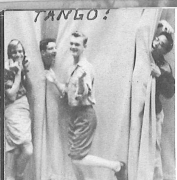
Compliments of  
  
DADE CITY BAKERY  
Harry Tipton, owner  
Dade City, Florida

Compliments of  
  
THE CHILDREN'S SHOP  
Featuring Quality at a Reasonable  
Price  
426 N. 7th Dade City, Florida

Compliments of  
  
RAMSEY  
SERVICE STATION  
Dade City Florida

Compliments of  
  
DR. H. H. FENNELL





IT'S BUICK  
FOR 53  
Sales and Service  
Painting and Glass Installation  
Metal Work

### ALEXANDER BUICK COMPANY

616 s. 5th St. Phone 431  
Dade City

#### HILL-TOP DRIVE-IN

Hamburgers  
Fried in Butter  
HILL-TOP  
SERVICE STATION  
Standard Oil Products  
Phone 338

#### PASCO SHOPPER

"Dade City's  
Shopping Guide  
to Better Buys"  
602 S. 5th St. Dade City  
Phone 483

For Insured Income  
See Your "Mony" Adviser  
CHARLES F. TOUCHTON, JR.  
Representing  
**MUTUAL OF NEW YORK**  
Life - Accident and Sickness  
Phone 510 Dade City, Florida

### MARION SMITH

Sucessor to J. A. Peek & Son  
Sherwin - Williams Paints Jim Dandy Feeds  
Seed, Plants, Fertilizer, Hardware & Freezer  
Supplies  
Phone 100 Dade City, Fla.

GREEN'S of FLORIDA  
FUEL INC.



A Better Gas Service  
for  
Heating — Cooking — Refrigeration  
Air Conditioning  
Distributors of Green's Fuel

Phone 457 Dade City

#### SHOP AND SAVE AT

### WESTERN AUTO

Associate Store

Home Owned and Operated by

H. A. FREEMAN

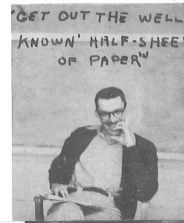
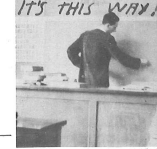
Opposite the Court House  
Dade City, Florida

#### WALGREEN AGENCY

Service Drugs  
Phone 288  
A. O. Kiefer - Mgr.  
Dade City, Florida

#### JOHNSON'S

5¢ to \$1 STORE  
308 E. Meridian Ave.  
Dade City, Florida  
Pasco County's  
Newest and Most Modern  
Variety Store





## The Sinclair Refining Company

LEWIS ABRAHAM  
DON AUGHENBAUGH  
ARCHER SHOARD

Compliments of

CROLEY  
INSURANCE AGENCY

409 E. Meridian Ave.

Massey Bld.

Dade City Florida

Phone 227 Black

TELEVISION

Sales and Service

MAYS'

Service Shop

Dade City Florida

Compliments

Dade City  
Lumber Company

1 block south of A. C. L. station

LUMBER

MILL WORK BUILDING SUPPLIES  
DADE CITY, FLORIDA

BEST WISHES



HIGHLANDS  
MOTOR COMPANY

Phone 123

Dade City, Florida



Compliments of

MADILL BUILDING SUPPLY

Building Material & Hardware

Phone 17 white

Dade City, Florida



DADE CITY MOTOR COMPANY

503 E. Meridian Ave.

Dade City, Florida

NEW AND USED CARS

A. D. Jernigan, Jr.

Telephone 89

Manager

WITHLACOOCHEE RIVER  
ELECTRIC  
COOPERATIVE, INC.

Owned by Those We Serve



DADE CITY, FLORIDA

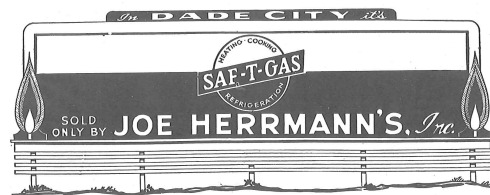
HIGHEST QUALITY MEATS

**G. & W. GROCERY**

LOWEST PRICES

539 North 7th Street

Dade City, Fla.



IT'S IN THE BOOK





FIRST ROW: Mildred Hayman, Patricia Lewis, Frances Drawdy, Hazel Ance, Dickie Barber, Milton Corley, James Kenfield, Wendell Barfield, Rex Dillon, Beauford Kirkland, George Council, Charles Helms, SECOND ROW: Horace Boyd, Lucille Boyette, Lucia Mae Bridgman, Jane Camp, Phyllis Callaway, Carolyn Campbell, Barbara Joe Beutis, Charles Groover, Jewel Lay, Wayne Bond, THIRD ROW: Dennis Bryant, Joy Dew, Mary Foster (Sassaman), Maxine Beckam, Eleanor Bromley, Richard Kimball, M. D. Hobbs, Claude Leasure, James Herndon, FOURTH ROW: Joann Holtzower, Eunice Stewart, Eleanor Boyette, Emma Atwater, Joan Hicks, Jean Hallman, Retha Cornwell, Joe Geiger, Edith Blocker, Bobby Douglas, Jeff Blitch, Virgil Jones, Bill Bechtelheimer, Thatcher Courtney.



FIRST ROW: Peter Nikolai, Charles Lewis, Carlene Griffin, Ina Merle Perryman, Carl Nelson, SECOND ROW: Marie Parker, Erma Jean Griffin, Joyce Payne, Arlene Wilson, Lou Whitley, Mitchell, Frances Williams, Layton Philmon, Glen Lewis, THIRD ROW: Theo Sutherland, R. V. Hemphill, Helen Moore, Edith McNatt, Cella Irwin, Mary Underwood, Kenneth Strong, Tommy North, FOURTH ROW: Sally Ratcliffe, Roberta Ward, Char-lotte Pugh, Shirley Johnson, Charles Touchton, Billy Rollins, Mack Underwood, Bobby Phillips, Ronald Smith, FIFTH ROW: Mrs. Cason, Robert Wallace, Harvey Pless, Luther Ronny, Stewart, L. P. Overstreet, Alvie Mosley, Bobby Mitchell, James Valentine.

*Myers*  
YEARBOOKS  
*in desktop*  
PACEMAKER  
OF QUALITY  
MYERS AND CO. INC. TOPEKA, KANSAS